

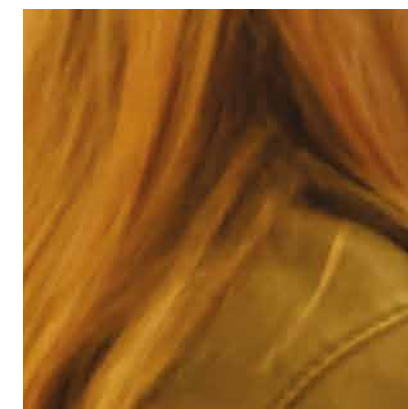
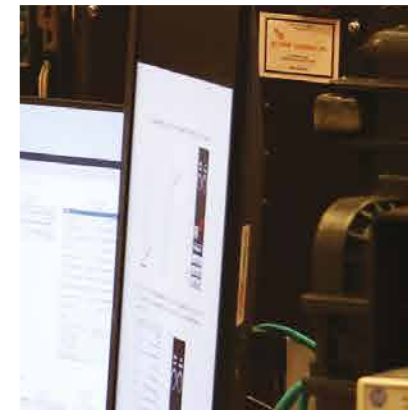
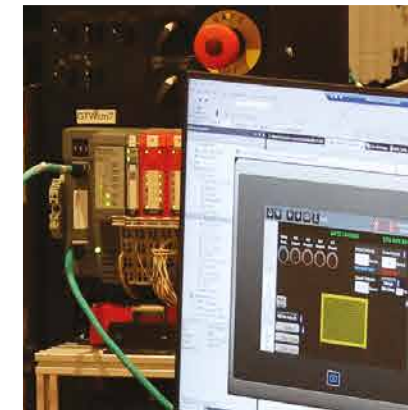
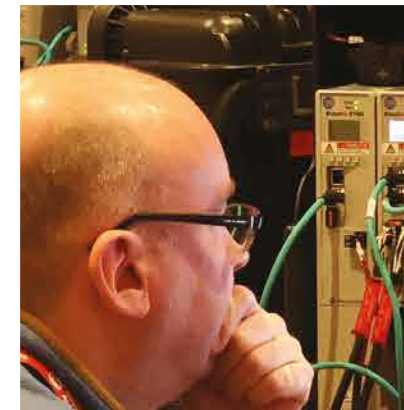


create what's next

9-12 March 2026

Marriott Madrid Auditorium
Hotel and Conference Center

session guide



ROKLive EMEA 2026 gathers professionals in operations, maintenance, engineering, and technology to explore advancements in industrial automation.

The event showcases Rockwell Automation's devices, software, and services that drive efficiency and innovation.

Over 155 sessions offered throughout the week including use cases, interactive discussions, live demonstrations, hands-on labs, and presentations. Many sessions will be repeated to give attendees multiple opportunities to gain practical insights into the future of automation.

Together, let's create what's next at ROKLive EMEA.

Key to the Sessions

CYBERSECURITY

Find solutions for your modern industrial operations on our Cybersecurity track. Don't miss the opportunity to discover the new OT Secure brand from Rockwell Automation and much more.

DIGITAL ENGINEERING

Recreating products and processes in the digital world can unleash new insights and efficiencies in your physical operations. Whether you're designing and commissioning machines, or managing production in a plant, digital engineering can help you get to market at record speeds, reduce your risk, and redefine productivity. Do you know that a digital twin can be used for sales as well? Find out how!

EDGE-TO-ENTERPRISE INFORMATION SOLUTIONS

Bolster manufacturing agility, maximize production and forecast the future with insights from the sessions on this Edge to Enterprise Information Solutions track. Cloud and edge computing both have important futures in supporting manufacturing. To make the best choice for each application, but it's crucial to make informed architectural decisions early in the process.

EXECUTIVE INSIGHTS

Join fellow leaders in exploring business trends and the future operations to gain fresh perspectives and actionable strategies.

INNOVATIONS

Discover the latest offerings and technological advancements from Rockwell Automation. Learn about new products, enhanced features, and innovative solutions designed to increase productivity and support your objectives.

MECHATRONICS & ROBOTICS

Discover how the mechatronics and robotics offering from Rockwell Automation will help you accelerate productivity and digital innovation. By leveraging advanced integration of mechanical systems with intelligent robotics, you can streamline complex automation tasks and enhance operational efficiency across your facility.

OEMS & MACHINE BUILDERS

Optimize your business results across the design, build, and commissioning phases of your machinery. Achieve exceptional machine differentiation and performance while accelerating time to market.

PROCESS SOLUTIONS

Enhance your operations with our seamlessly integrated process system. Reduce risk with our advanced, intuitive solutions designed to maximize efficiency and reliability. Get ready to explore our end-to-end solutions.

Drop-In Room

Experience our technologies at your own pace, join our hands-on labs and virtual hands-on sessions with no pre-registration requirement. Drop-in and find out about the base features of our key product platforms through hands-on labs. The topics covered include visualization, safety, motion, network and many more.

Connection Zone

Nothing beats the in-person experience, ROKLive EMEA provides the arena to meet with peers and partners. Grab a coffee, join one of our guided tours, and discover the power of our PartnerNetwork™ with Partner tabletop displays, demos units showcasing Rockwell and Partner solutions, and of course lots of networking.



Time	08:00	09:00	10:00	11:00	12:00	13:00	14:00	15:00	16:00	17:00	18:00
	REGISTRATIONS (Open all week)										
Monday 9th March				General Access Sessions				General Access Pass Sessions			
				Advanced Training Sessions		Lunch Break	Keynotes	Advanced Training Pass Sessions			
				HOTT Sessions				HOTT Sessions			
				Drop-In Room				Drop-In Room			
				Connection Zone							Welcome Reception
Tuesday 10th March				General Access Pass Sessions				General Access Pass Sessions			
				Advanced Training Pass Sessions		Lunch Break	Keynotes	Advanced Training Pass Sessions			
				HOTT Sessions				HOTT Sessions			
				Drop-In Room				Drop-In Room			
				Connection Zone							
Wednesday 11th March				General Access Pass Sessions				General Access Pass Sessions			
				Advanced Training Pass Sessions		Lunch Break		Advanced Training Pass Sessions			
				HOTT Sessions				HOTT Sessions			
				Drop-In Room				Drop-In Room			
				Connection Zone							ROKFest
Thursday 12th March				General Access Pass Sessions			General Access Sessions				
				Advanced Training Pass Sessions		Lunch Break	Advanced Training Pass Sessions				
				HOTT Sessions			HOTT Sessions				
				Drop-In Room			Drop-In Room				
				Connection Zone							
Time	08:00	09:00	10:00	11:00	12:00	13:00	14:00	15:00	16:00	17:00	18:00

ROOM	Bonn	Bristol	Colonia	Duesseldorf	Estrasburgo	Frankfurt	Londres	Lyon	ROOM
Time	Lab Sessions	Lab Sessions	Lab Sessions	Lab Sessions	Lab Sessions	Lab Sessions	Lab Sessions	Lab Sessions	Time
08:00 - 10:00									09:00 - 10:00
	Break	Break	Break	Break	Break	Break	Break	Break	
10:30 - 12:30	OEMS & MACHINE BUILDERS	OEMS & MACHINE BUILDERS	EDGE-TO-ENTERPRISE SOLUTIONS	EDGE-TO-ENTERPRISE SOLUTIONS	OEMS & MACHINE BUILDERS	OEMS & MACHINE BUILDERS	OEMS & MACHINE BUILDERS	OEMS & MACHINE BUILDERS	10:30 - 12:30
	L05 PowerFlex 755TS Drive: Fundamentals Hands-On Lab	L10 Integrated Motion on EtherNet/IP: Advanced Hands-On Lab	IL07 Introduction to Data Capture for Manufacturing With FactoryTalk Historian Software Hands-On Lab	L22 Advanced Data Capture Methodologies for Manufacturing with FactoryTalk Historian Software Hands-On Lab	L30 Elevate your Application with FactoryTalk Optix Examples Hands-On Lab	L17 Improve Efficiency and Quality Through FactoryTalk Analytics LogixAI Soft Sensing Hands-On Lab	L01 Empowering Devices to Defend with CIP Security Hands-On Lab	L36 Stratix Switches: Fundamentals Hands-On Lab	
	Lunch	Lunch	Lunch	Lunch	Lunch	Lunch	Lunch	Lunch	
13:30 - 14:30				KEYNOTES					13:30 - 14:30
14:30 - 15:30									14:30 - 15:30
	Break	Break	Break	Break	Break	Break	Break	Break	
16:00 - 18:00	OEMS & MACHINE BUILDERS	OEMS & MACHINE BUILDERS	OEMS & MACHINE BUILDERS	OEMS & MACHINE BUILDERS	OEMS & MACHINE BUILDERS	OEMS & MACHINE BUILDERS	UNIVERSAL TRACK	OEMS & MACHINE BUILDERS	16:00 - 18:00
	L06 PowerFlex 755TS Drive: Advanced Features Hands-on Lab	L09 Integrated Motion on EtherNet/IP: Fundamentals Hands-On Lab	L80 FactoryTalk® Security Basic Hands-On Lab	L82 FactoryTalk Security Advanced Hands-On Lab	IL05 Introduction to FactoryTalk Optix Visualization Platform Hands-On Lab	L27 Design Better Discrete Systems With Emulate3D Digital Twin Software Hands-On Lab	IL09 Introduction to ThinManager Hands-On Lab	L37 Stratix Switches: Advanced Hands-On Lab	

ROOM	Marsella	Munich	Ocaña	Oxford	Paris	Santa Olalla	Burdeos	Toulouse	ROOM
Time	Lab Sessions	Lab Sessions	Lab Sessions	Lab Sessions	Lab Sessions	Lab Sessions	Demonstrations	Demonstrations	Time
08:00 - 10:00									09:00 - 10:00
	Break	Break	Break	Break	Break	Break	Break	Break	
10:30 - 12:30	OEMS & MACHINE BUILDERS IL01 Introduction to FactoryTalk Design Workbench: Develop a Standalone Machine Application Hands-On Lab	PROCESS SOLUTIONS L21 FactoryTalk Batch Hands-On Lab	UNIVERSAL TRACK L83 From Data to Decisions: Hands-on with FactoryTalk Energy Manager	OEMS & MACHINE BUILDERS L43 Create and Deploy a Robot Library Solution Hands-On Lab	UNIVERSAL TRACK L20 Using FactoryTalk Linx Gateway to Securely Access and Manage a Control System Hands-On Lab	EDGE-TO-ENTERPRISE SOLUTIONS L28 Leveraging the Plex Digital Work Instruction Suite Hands-On Lab	OEMS & MACHINE BUILDERS D03 Kinetix Motion Control meets Simplified Analytics: Boost Machine Efficiency and Equipment Health	OEMS & MACHINE BUILDERS D09 FactoryTalk Design Studio Demonstration Session	10:30 - 11:30
									11:30 - 12:30
	Lunch	Lunch	Lunch	Lunch	Lunch	Lunch	Lunch	Lunch	
13:30 - 14:30				KEYNOTES					13:30 - 14:30
14:30 - 15:30				OEMS & MACHINE BUILDERS L44 The Robot Programming Experience Hands-on Lab			OEMS & MACHINE BUILDERS D02 The PowerFlex Drives Experience: Practical Insights from Selection to Maintenance	OEMS & MACHINE BUILDERS D14 Securing a Logix Controller	14:30 - 15:30
	Break	Break	Break	Break	Break	Break	Break	Break	
16:00 - 18:00	OEMS & MACHINE BUILDERS IL03 Introduction to PointMax I/O: Experience How Simplicity and Performance Come Together in a Platform Hands-On Lab	PROCESS SOLUTIONS IL10 Introduction to PlantPAx 5.40 Operations for End Users Hands-On Lab	UNIVERSAL TRACK L83 From Data to Decisions: Hands-on with FactoryTalk Energy Manager	L44 (continued session)	OEMS & MACHINE BUILDERS L41 Embedded Edge Compute Optimized for FactoryTalk Optix and Docker Hands-On Lab	EDGE-TO-ENTERPRISE SOLUTIONS L29 Finite Scheduler Boot Camp Hands-On Lab	OEMS & MACHINE BUILDERS D06 How to Secure your Machine to Protect your Safety Functions Against Corruption	OEMS & MACHINE BUILDERS D07 System Software Architecture Design	16:00 - 17:00
									17:00 - 18:00

ROOM	Manchester	Mora	Noblejas	Pedraza	Trujillo	Tudela	ROOM
Time	Presentations	Presentations	Presentations	Presentations	Presentations	Presentations	Time
08:00 - 10:00							09:00 - 10:00
	Break	Break	Break	Break	Break	Break	
10:30 - 11:30		MECHATRONICS & ROBOTICS IE02 What's New and What's Next in Independent Cart Technology	CYBERSECURITY IE25 Secure Your Machine: The OEM's Role in Safeguarding the Connected Enterprise	OEMS & MACHINE BUILDERS IE97 PowerFlex Variable Frequency Drives Overview	EDGE-TO-ENTERPRISE SOLUTIONS DT02 The New Industrial Frontier: Using AI to Scale Faster, Work Smarter, and Unlock New Value	DIGITAL ENGINEERING PT12 Accelerate PLC Design with Industrial DevOps	10:30 - 11:30
11:30 - 12:30		PROCESS SOLUTIONS PT10 Solution to Burner Management Applications	UNIVERSAL TRACK PT59 Improving Safety and Efficiency in Energy/O&G with RMIS Robotic Solutions	OEMS & MACHINE BUILDERS PT62 OEMs - Are you Ready for the New Machinery Regulation (EU)2023/1230?	EDGE-TO-ENTERPRISE SOLUTIONS PT21 Unleashing Industrial Insights with FactoryTalk DataMosaix SaaS	DIGITAL ENGINEERING IE71 Innovating Food & Beverage Operations with Digital Twins to Deliver Global Expansion and Operational Excellence	11:30 - 12:30
	Lunch	Lunch	Lunch	Lunch	Lunch	Lunch	
13:30 - 14:30			KEYNOTES				13:30 - 14:30
14:30 - 15:30		UNIVERSAL TRACK IA57 Resilient Control Systems for High Availability - Ali Kuleli	UNIVERSAL TRACK IE90 Maximizing Production and Profit with Pavilion8 Model Predictive Control at SABIC Gelsenkirchen	INNOVATIONS PT64 Arc Safety that Pays off: Active & Passive Mitigation with FLEXLINE 3500 Motor Control Center	EDGE-TO-ENTERPRISE SOLUTIONS IE17 Introduction to OptixEdge: Redefining What is Possible at the Industrial Edge	DIGITAL ENGINEERING CP01 Digital Engineering Customer Presentation 1	14:30 - 15:30
	Break	Break	Break	Break	Break	Break	
16:00 - 17:00		CYBERSECURITY IE11 Navigating OT Cybersecurity Regulations	EXECUTIVE INSIGHTS IE53 AI and Analytics Powering the Future of Energy Management	OEMS & MACHINE BUILDERS IE65 Driving Value for Machine Builders and their End User Customers with a Digital Twin Strategy	EDGE-TO-ENTERPRISE SOLUTIONS IE22 Connected Worker – Lean Collaboration: Building the Digital Continuous Improvement Engine	DIGITAL ENGINEERING PT65 Accelerating Robotics and Mechatronics Innovation through Digital Engineering	16:00 - 17:00
17:00 - 18:00		UNIVERSAL TRACK PT51 Fundamentals of EtherNet/IP Networking in an Industrial System	UNIVERSAL TRACK IE63 Data-Driven Decisions: Harnessing Digital Insights for Operational Excellence		EDGE-TO-ENTERPRISE SOLUTIONS IE31 Unlock Valuable Data Insights Trapped in Machines and Equipment with new DataReady Solution	UNIVERSAL TRACK IE05 What's New and What's Next in the FactoryTalk View Software Portfolio: Refresh Your Insight	17:00 - 18:00

ROOM	Bonn	Bristol	Colonia	Duesseldorf	Estrasburgo	Frankfurt	Londres	Lyon	ROOM
Time	Lab Sessions	Lab Sessions	Lab Sessions	Lab Sessions	Lab Sessions	Lab Sessions	Lab Sessions	Lab Sessions	Time
08:00 - 10:00	OEMS & MACHINE BUILDERS	OEMS & MACHINE BUILDERS	UNIVERSAL TRACK	UNIVERSAL TRACK	OEMS & MACHINE BUILDERS	OEMS & MACHINE BUILDERS	UNIVERSAL TRACK	OEMS & MACHINE BUILDERS	09:00 - 10:00
	L05 PowerFlex 755TS Drive: Fundamentals Hands-On Lab	L10 Integrated Motion on EtherNet/IP: Advanced Hands-On Lab	IL08 Introduction to FactoryTalk AssetCentre Software Hands-On Lab	L81 FactoryTalk AssetCentre Advanced Hands-On Lab	IL05 Introduction to FactoryTalk Optix Visualization Platform Hands-On Lab	L26 Design Better Hybrid and Process Systems With Emulate3D Digital Twin Software Hands-On Lab	L38 ThinManager: Take a Deep Dive From the Visualization Edge Hands-On Lab	L36 Stratix Switches: Fundamentals Hands-On Lab	
	Break	Break	Break	Break	Break	Break	Break	Break	
10:30 - 12:30	OEMS & MACHINE BUILDERS	UNIVERSAL TRACK	UNIVERSAL TRACK	OEMS & MACHINE BUILDERS	OEMS & MACHINE BUILDERS	OEMS & MACHINE BUILDERS	L38 (continued session)	OEMS & MACHINE BUILDERS	10:30 - 12:30
	L06 PowerFlex 755TS Drive: Advanced Features Hands-on Lab	L09 Integrated Motion on EtherNet/IP: Fundamentals Hands-On Lab	IL02 Introduction to Distributed HMI with FactoryTalk View Site Edition Software Hands-On Lab	L34 What's New in FactoryTalk View Site Edition Software Hands-On Lab	L19 Logix Integrated Safety Controller: Advanced Applications Hands-On Lab	L27 Design Better Discrete Systems With Emulate3D Digital Twin Software Hands-On Lab		L37 Stratix Switches: Advanced Hands-On Lab	
	Lunch	Lunch	Lunch	Lunch	Lunch	Lunch	Lunch	Lunch	
13:30 - 14:30				KEYNOTES					13:30 - 14:30
14:30 - 15:30									14:30 - 15:30
	Break	Break	Break	Break	Break	Break	Break	Break	
16:00 - 18:00	OEMS & MACHINE BUILDERS	PROCESS SOLUTIONS	OEMS & MACHINE BUILDERS	OEMS & MACHINE BUILDERS	OEMS & MACHINE BUILDERS	OEMS & MACHINE BUILDERS	UNIVERSAL TRACK	OEMS & MACHINE BUILDERS	16:00 - 18:00
	L05 PowerFlex 755TS Drive: Fundamentals Hands-On Lab	L03 Logix SIS: Implementing Safety Functions Hands-On Lab	IL06 Introduction to Logix Integrated Safety Controller Hands-On Lab	IL04 Introduction to Studio 5000 Logix Designer Application Basics	L35 Advance Your HMI Vision: FactoryTalk Optix Visualization Platform Hands-On Lab	L16 Automation System Design in the Cloud Using FactoryTalk Design Studio Hands-On Lab	IL09 Introduction to ThinManager Hands-On Lab	L36 Stratix Switches: Fundamentals Hands-On Lab	

ROOM	Marsella	Munich	Ocaña	Oxford	Paris	Santa Olalla	Burdeos	Toulouse	ROOM
Time	Lab Sessions	Lab Sessions	Lab Sessions	Lab Sessions	Lab Sessions	Lab Sessions	Demonstrations	Demonstrations	Time
08:00 - 10:00	OEMS & MACHINE BUILDERS	PROCESS SOLUTIONS	EDGE-TO-ENTERPRISE SOLUTIONS	OEMS & MACHINE BUILDERS	OEMS & MACHINE BUILDERS		OEMS & MACHINE BUILDERS	UNIVERSAL TRACK	08:00 - 09:00
	IL01 Introduction to FactoryTalk Design Workbench: Develop a Standalone Machine Application Hands-On Lab	L40 Leveraging Engineering Workflows That Streamline PlantPax System Development Hands-On Lab	L23 Advanced DataOps with FactoryTalk DataMosaix Platform Hands-On Lab	L43 Create and Deploy a Robot Library Solution Hands-On Lab	L42 Automate Your Engineering to Increase Productivity with APIs Hands-On Lab		D01 Mastering Servo Axis Tuning for Optimized Machine Performance	D12 Learn how to Unlock the Capabilities of Stratix Managed Switch Platforms and Streamline Migration	09:00 - 10:00
							OEMS & MACHINE BUILDERS	D13 Remote Access for Industrial Automation Control Systems (IACS)	
	Break	Break	Break	Break	Break	Break	Break	Break	
10:30 - 12:30	OEMS & MACHINE BUILDERS	PROCESS SOLUTIONS	EDGE-TO-ENTERPRISE SOLUTIONS	OEMS & MACHINE BUILDERS	OEMS & MACHINE BUILDERS	EDGE-TO-ENTERPRISE SOLUTIONS	OEMS & MACHINE BUILDERS	OEMS & MACHINE BUILDERS	10:30 - 12:00
	IL03 Introduction to PointMax I/O: Experience How Simplicity and Performance Come Together in a Platform Hands-On Lab	L21 FactoryTalk Batch Hands-On Lab	L24 Industrial DataOps with FactoryTalk DataMosaix Platform Hands-On Lab	L13 Accelerate Panel Design and Deployment Using the EtherNet/IP In-cabinet Solution Hands-On Lab	L15 Studio 5000 Logix Designer: What's New and Next Steps Advanced Hands-On Lab	L31 Build Your First Automation: Plex Process Flows Hands-On Lab	D06 How to Secure your Machine to Protect your Safety Functions Against Corruption	D10 FactoryTalk Optix Demo	12:00 - 12:30
	Lunch	Lunch	Lunch	Lunch	Lunch	Lunch	Lunch	Lunch	
13:30 - 14:30				KEYNOTES					13:30 - 14:30
14:30 - 15:30				OEMS & MACHINE BUILDERS			OEMS & MACHINE BUILDERS	OEMS & MACHINE BUILDERS	14:30 - 15:30
				L44 The Robot Programming Experience Hands-on Lab			D02 The PowerFlex Drives Experience: Practical Insights from Selection to Maintenance	D14 Securing a Logix Controller	
	Break	Break	Break	Break	Break	Break	Break	Break	
16:00 - 18:00	OEMS & MACHINE BUILDERS	PROCESS SOLUTIONS	EDGE-TO-ENTERPRISE SOLUTIONS		UNIVERSAL TRACK		OEMS & MACHINE BUILDERS	OEMS & MACHINE BUILDERS	16:00 - 17:00
	IL03 Introduction to PointMax I/O: Experience How Simplicity and Performance Come Together in a Platform Hands-On Lab	L39 PlantPax 5.40: Bulk Engineering for System Deployers Hands-On Lab	L25 Enable Condition-Based and Predictive Maintenance Using Industrial Protocols Hands-On Lab	L44 (continued session)	L20 Using FactoryTalk Linx Gateway to Securely Access and Manage a Control System Hands-On Lab		D03 Kinetix Motion Control meets Simplified Analytics: Boost Machine Efficiency and Equipment Health	D15 FactoryTalk Optix Tips, Tricks & Application Insights	17:00 - 18:00

ROOM	Manchester	Mora	Noblejas	Pedraza	Trujillo	Tudela	ROOM
Time	Presentations	Presentations	Presentations	Presentations	Presentations	Presentations	Time
08:00 - 09:00		PROCESS SOLUTIONS	CYBERSECURITY	OEMS & MACHINE BUILDERS	EDGE-TO-ENTERPRISE SOLUTIONS	DIGITAL ENGINEERING	08:00 - 09:00
		IE24 Smarter Deployments, Simpler Maintenance: Streamlining PlantPax with the new Provisioning and Management Platform	IE55 The Value of Managed Security Services in OT Environments	IE04 What's New and What's Next in Logix: Unlocking the ControlLogix 5590 Controller System Experience	IE85 Navigating Uncertainty: Advanced Production Scheduling with Finite Scheduler	PT66 Digital Engineering for Process Control: From Concept to Commissioning	
09:00 - 10:00		MECHATRONICS & ROBOTICS	UNIVERSAL TRACK	OEMS & MACHINE BUILDERS	MECHATRONICS & ROBOTICS	DIGITAL ENGINEERING	09:00 - 10:00
		PT08 How to Design Industrial Robot Applications	PT61 Global Food Manufacturer Revolutionizes its Industrial Data Fabric with UnifyTwin	PT67 Embracing the Autonomous OEM: Building the Future Together	PT15 How to Program an Independent Cart Technology Transport System	PT03 Emulate3D Digital Twin Software: What's New and What's Next	
	Break	Break	Break	Break	Break	Break	
10:30 - 11:30	OEMS & MACHINE BUILDERS	CYBERSECURITY	CYBERSECURITY	OEMS & MACHINE BUILDERS	EDGE-TO-ENTERPRISE SOLUTIONS	DIGITAL ENGINEERING	10:30 - 11:30
	PT69 Transforming Machine Design with the Next-Generation Control System	IE30 Advanced Examination of Ethernet Networking in Industrial Control Communications	PT55 Prioritize Operational Cyber Risk and Drive a Risk Based Vulnerability Program	PT63 Safety, Sensing and Industrial Control Linking Technology to Support SMART Solution	PT19 Enable Condition-based and Predictive Maintenance Using Industrial Protocols	IE38 Transform Your Digital Engineering Processes with Emulate3D Digital Twin Software	
11:30 - 12:30		UNIVERSAL TRACK		INNOVATIONS	EDGE-TO-ENTERPRISE SOLUTIONS	DIGITAL ENGINEERING	11:30 - 12:30
		PT01 Enable Challenging Smart Operations with Industrial 5G		IE32 Introducing PointMax I/O: Help Elevate your Integrated Architecture Experience	IE49 Machine Vision: AI-Powered Quality Inspections for Better Manufacturing Efficiency	IE34 FactoryTalk Design Studio in the Cloud to Increase System Design Efficiency	
	Lunch	Lunch	Lunch	Lunch	Lunch	Lunch	
13:30 - 14:30			KEYNOTES				13:30 - 14:30
14:30 - 15:30		UNIVERSAL TRACK	UNIVERSAL TRACK		EDGE-TO-ENTERPRISE SOLUTIONS	DIGITAL ENGINEERING	14:30 - 15:30
		IA57 Resilient Control Systems for High Availability - Ali Kuleli	PT60 Beyond DataReady: Enabling new Business Models and Enhancing Customer Value with Smart Machines		IE20 Scalable Visualization with Centralized Management	CP02 Digital Engineering Customer Presentation 2	
	Break	Break	Break	Break	Break	Break	
16:00 - 17:00		CYBERSECURITY	CYBERSECURITY	OEMS & MACHINE BUILDERS	EDGE-TO-ENTERPRISE SOLUTIONS	OEMS & MACHINE BUILDERS	16:00 - 17:00
		PT52 Asset Center: What is new in FTAC?	PT56 Building the Right Foundation for the Factory of the Future	PT27 Wireless Condition Monitoring: New Products to Maximize Uptime	IE81 Integrating FactoryTalk Analytics VisionAI and Plex QMS to Manage Visual Inspection	IE06 What's New and What's Next in Visualization Software and Hardware Portfolio	
17:00 - 18:00		UNIVERSAL TRACK	EXECUTIVE INSIGHTS	INNOVATIONS	EDGE-TO-ENTERPRISE SOLUTIONS	OEMS & MACHINE BUILDERS	17:00 - 18:00
		PT05 Expand your Automation System Possibilities Using FactoryTalk Linx Communication Software	PT58 Advancing from Automation to Autonomy in Automotive Manufacturing	PT68 Working Intelligently with Galaxy Software (CUBIC)	IE57 Traditional AI and Generative AI: A Powerful Convergence Transforming Manufacturing	IE07 What's New and What's Next with FactoryTalk Remote Access Solution: Overview, Architectures and Options	

ROOM	Bonn	Bristol	Colonia	Duesseldorf	Estrasburgo	Frankfurt	Londres	Lyon	ROOM
Time	Lab Sessions	Lab Sessions	Lab Sessions	Lab Sessions	Lab Sessions	Lab Sessions	Lab Sessions	Lab Sessions	Time
08:00 - 10:00	OEMS & MACHINE BUILDERS	PROCESS SOLUTIONS	UNIVERSAL TRACK	OEMS & MACHINE BUILDERS	OEMS & MACHINE BUILDERS	OEMS & MACHINE BUILDERS	UNIVERSAL TRACK	OEMS & MACHINE BUILDERS	09:00 - 10:00
	L06 PowerFlex 755TS Drive: Advanced Features Hands-on Lab	L03 Logix SIS: Implementing Safety Functions Hands-On Lab	IL02 Introduction to Distributed HMI with FactoryTalk View Site Edition Software Hands-On Lab	L34 What's New in FactoryTalk View Site Edition Software Hands-On Lab	L35 Advance Your HMI Vision: FactoryTalk Optix Visualization Platform Hands-On Lab	L26 Design Better Hybrid and Process Systems With Emulate3D Digital Twin Software Hands-On Lab	IL09 Introduction to ThinManager Hands-On Lab	L37 Stratix Switches: Advanced Hands-On Lab	
	Break	Break	Break	Break	Break	Break	Break	Break	
10:30 - 12:30	OEMS & MACHINE BUILDERS	OEMS & MACHINE BUILDERS	EDGE-TO-ENTERPRISE SOLUTIONS	EDGE-TO-ENTERPRISE SOLUTIONS	OEMS & MACHINE BUILDERS	OEMS & MACHINE BUILDERS	CYBERSECURITY	OEMS & MACHINE BUILDERS	10:30 - 12:30
	L05 PowerFlex 755TS Drive: Fundamentals Hands-On Lab	L10 Integrated Motion on EtherNet/IP: Advanced Hands-On Lab	IL07 Introduction to Data Capture for Manufacturing with FactoryTalk Historian Software Hands-On Lab	L22 Advanced Data Capture Methodologies for Manufacturing with FactoryTalk Historian Software Hands-On Lab	L19 Logix Integrated Safety Controller: Advanced Applications Hands-On Lab	L16 Automation System Design in the Cloud Using FactoryTalk Design Studio Hands-On Lab	L01 Empowering Devices to Defend with CIP Security Hands-On Lab	L36 Stratix Switches: Fundamentals Hands-On Lab	
	Lunch	Lunch	Lunch	Lunch	Lunch	Lunch	Lunch	Lunch	
13:30 - 15:30	OEMS & MACHINE BUILDERS	UNIVERSAL TRACK	OEMS & MACHINE BUILDERS	OEMS & MACHINE BUILDERS	OEMS & MACHINE BUILDERS	OEMS & MACHINE BUILDERS	UNIVERSAL TRACK	OEMS & MACHINE BUILDERS	13:30 - 15:30
	L06 PowerFlex 755TS Drive: Advanced Features Hands-on Lab	L09 Integrated Motion on EtherNet/IP: Fundamentals Hands-On Lab	IL06 Introduction to Logix Integrated Safety Controller Hands-On Lab	IL04 Introduction to Studio 5000 Logix Designer Application Basics	IL05 Introduction to FactoryTalk Optix Visualization Platform Hands-On Lab	L27 Design Better Discrete Systems With Emulate3D Digital Twin Software Hands-On Lab	L38 ThinManager: Take a Deep Dive From the Visualization Edge Hands-On Lab	L37 Stratix Switches: Advanced Hands-On Lab	
	Break	Break	Break	Break	Break	Break	Break	Break	
16:00 - 18:00		OEMS & MACHINE BUILDERS	OEMS & MACHINE BUILDERS	OEMS & MACHINE BUILDERS	OEMS & MACHINE BUILDERS	OEMS & MACHINE BUILDERS		OEMS & MACHINE BUILDERS	16:00 - 18:00
		L10 Integrated Motion on EtherNet/IP: Advanced Hands-On Lab	L80 FactoryTalk® Security: Basic Hands-On Lab	L82 FactoryTalk Security: Advanced Hands-On Lab	L30 Elevate your Application with FactoryTalk Optix Examples Hands-On Lab	L17 Improve Efficiency and Quality Through FactoryTalk Analytics LogixAI Soft Sensing Hands-On Lab	L38 (continued session)	L36 Stratix Switches: Fundamentals Hands-On Lab	

ROOM	Marsella	Munich	Ocaña	Oxford	Paris	Santa Olalla	Burdeos	Toulouse	ROOM
Time	Lab Sessions	Lab Sessions	Lab Sessions	Lab Sessions	Lab Sessions	Lab Sessions	Demonstrations	Demonstrations	Time
08:00 - 10:00	OEMS & MACHINE BUILDERS	PROCESS SOLUTIONS	EDGE-TO-ENTERPRISE SOLUTIONS	OEMS & MACHINE BUILDERS	OEMS & MACHINE BUILDERS	EDGE-TO-ENTERPRISE SOLUTIONS	OEMS & MACHINE BUILDERS	OEMS & MACHINE BUILDERS	08:00 - 09:00
	IL03 Introduction to PointMax I/O: Experience How Simplicity and Performance Come Together in a Platform Hands-On Lab	L14 FLEXHA 5000 I/O Hands-On Lab	L24 Industrial DataOps with FactoryTalk DataMosaix Platform Hands-On Lab	L13 Accelerate Panel Design and Deployment Using the EtherNet/IP In-cabinet Solution Hands-On Lab	L15 Studio 5000 Logix Designer: What's New and Next Steps Advanced Hands-On Lab	L31 Build Your First Automation: Plex Process Flows Hands-On Lab	D05 Lifetime of a Digital Twin	D11 How to Improve Plant Operations through Better HMI Graphics	
							OEMS & MACHINE BUILDERS	OEMS & MACHINE BUILDERS	
10:30 - 12:30	Break	Break	Break	Break	Break	Break	Break	Break	09:00 - 10:00
	OEMS & MACHINE BUILDERS	PROCESS SOLUTIONS	EDGE-TO-ENTERPRISE SOLUTIONS	OEMS & MACHINE BUILDERS	OEMS & MACHINE BUILDERS	EDGE-TO-ENTERPRISE SOLUTIONS	OEMS & MACHINE BUILDERS	OEMS & MACHINE BUILDERS	
	L04 Advanced Machine Design with Connected Components Workbench Software Hands-On Lab	IL10 Introduction to PlantPax 5.40 Operations for End Users Hands-On Lab	L23 Advanced DataOps with FactoryTalk DataMosaix Platform Hands-On Lab	L43 Create and Deploy a Robot Library Solution Hands-On Lab	L41 Embedded Edge Compute Optimized for FactoryTalk Optix and Docker Hands-On Lab	L29 Finite Scheduler Boot Camp Hands-On Lab	D09 FactoryTalk Design Studio Demonstration Session	D08 Benefits of Time Synchronization (CIP Sync) in Modern EtherNet/IP™ Network Architectures	
13:30 - 15:30	Break	Break	Break	Break	Break	Break	Break	Break	10:30 - 11:30
	OEMS & MACHINE BUILDERS	PROCESS SOLUTIONS	EDGE-TO-ENTERPRISE SOLUTIONS	OEMS & MACHINE BUILDERS	OEMS & MACHINE BUILDERS	EDGE-TO-ENTERPRISE SOLUTIONS	OEMS & MACHINE BUILDERS	OEMS & MACHINE BUILDERS	
	L04 Advanced Machine Design with Connected Components Workbench Software Hands-On Lab	IL10 Introduction to PlantPax 5.40 Operations for End Users Hands-On Lab	L23 Advanced DataOps with FactoryTalk DataMosaix Platform Hands-On Lab	L43 Create and Deploy a Robot Library Solution Hands-On Lab	L41 Embedded Edge Compute Optimized for FactoryTalk Optix and Docker Hands-On Lab	L29 Finite Scheduler Boot Camp Hands-On Lab	D01 Mastering Servo Axis Tuning for Optimized Machine Performance	D10 FactoryTalk Optix Demo	
16:00 - 18:00	Lunch	Lunch	Lunch	Lunch	Lunch	Lunch	Lunch	Lunch	11:30 - 12:30
	OEMS & MACHINE BUILDERS	PROCESS SOLUTIONS	UNIVERSAL TRACK	OEMS & MACHINE BUILDERS	UNIVERSAL TRACK	EDGE-TO-ENTERPRISE SOLUTIONS	OEMS & MACHINE BUILDERS	OEMS & MACHINE BUILDERS	
	IL03 Introduction to PointMax I/O: Experience How Simplicity and Performance Come Together in a Platform Hands-On Lab	L39 PlantPax 5.40: Bulk Engineering for System Deployers Hands-On Lab	L83 From Data to Decisions: Hands-on with FactoryTalk Energy Manager	L13 Accelerate Panel Design and Deployment Using the EtherNet/IP In-cabinet Solution Hands-On Lab	L20 Using FactoryTalk Linx Gateway to Securely Access and Manage a Control System Hands-On Lab	L28 Leveraging the Plex Digital Work Instruction Suite Hands-On Lab	D13 Remote Access for Industrial Automation Control Systems (IACS)		
16:00 - 18:00	Break	Break	Break	Break	Break	Break	Break	Break	13:30 - 14:30
	OEMS & MACHINE BUILDERS	PROCESS SOLUTIONS			OEMS & MACHINE BUILDERS		OEMS & MACHINE BUILDERS	OEMS & MACHINE BUILDERS	
	IL01 Introduction to FactoryTalk Design Workbench: Develop a Standalone Machine Application Hands-On Lab	L40 Leveraging Engineering Workflows that Streamline PlantPax System Development Hands-On Lab			L42 Automate Your Engineering to Increase Productivity with APIs Hands-On Lab		D02 The PowerFlex Drives Experience: Practical Insights from Selection to Maintenance	D09 FactoryTalk Design Studio Demonstration Session	
16:00 - 18:00	Break	Break	Break	Break	Break	Break	Break	Break	14:30 - 15:30
	OEMS & MACHINE BUILDERS	PROCESS SOLUTIONS			OEMS & MACHINE BUILDERS		OEMS & MACHINE BUILDERS	OEMS & MACHINE BUILDERS	
	IL01 Introduction to FactoryTalk Design Workbench: Develop a Standalone Machine Application Hands-On Lab	L40 Leveraging Engineering Workflows that Streamline PlantPax System Development Hands-On Lab			L42 Automate Your Engineering to Increase Productivity with APIs Hands-On Lab		D05 Lifetime of a Digital Twin		

ROOM	Manchester	Mora	Noblejas	Pedraza	Trujillo	Tudela	ROOM
Time	Presentations	Presentations	Presentations	Presentations	Presentations	Presentations	Time
08:00 - 09:00		CYBERSECURITY IE11 Navigating OT Cybersecurity Regulations	CYBERSECURITY PT57 Plant-floor to DMZ: Key OT Security Trends and how Rockwell Automation Limits Risk		EDGE-TO-ENTERPRISE SOLUTIONS IE22 Connected Worker – Lean Collaboration: Building the Digital Continuous Improvement Engine	DIGITAL ENGINEERING PT65 Accelerating Robotics and Mechatronics Innovation through Digital Engineering	08:00 - 09:00
09:00 - 10:00		PROCESS SOLUTIONS PT54 The Value of Using Rockwell Automation Library of Process Objects	UNIVERSAL TRACK IE63 Data-Driven Decisions: Harnessing Digital Insights for Operational Excellence	INNOVATIONS IE32 Introducing PointMax I/O: Help Elevate your Integrated Architecture Experience	EDGE-TO-ENTERPRISE SOLUTIONS IE49 Machine Vision: AI-Powered Quality Inspections for Better Manufacturing Efficiency	DIGITAL ENGINEERING IE34 FactoryTalk Design Studio in the Cloud to increase System Design Efficiency	09:00 - 10:00
	Break	Break	Break	Break	Break	Break	
10:30 - 11:30	OEMS & MACHINE BUILDERS PT69 Transforming Machine Design with the Next-Generation Control System	PROCESS SOLUTIONS IE24 Smarter Deployments, Simpler Maintenance: Streamlining PlantPax with the new Provisioning and Management Platform	UNIVERSAL TRACK PT61 Global Food Manufacturer Revolutionizes its Industrial Data Fabric with UnifyTwin	OEMS & MACHINE BUILDERS IE65 Driving Value for Machine Builders and their End User Customers with a Digital Twin Strategy	EDGE-TO-ENTERPRISE SOLUTIONS IE23 Maximize Your HMI Potential: Modernization Strategies for Success	DIGITAL ENGINEERING IE38 Transform Your Digital Engineering Processes with Emulate3D Digital Twin Software	10:30 - 11:30
11:30 - 12:30			EXECUTIVE INSIGHTS IE53 AI and Analytics Powering the Future of Energy Management	OEMS & MACHINE BUILDERS IE29 Micro Control: Integrated Automation Solution	EDGE-TO-ENTERPRISE SOLUTIONS IE57 Traditional AI and Generative AI: A Powerful Convergence Transforming Manufacturing	OEMS & MACHINE BUILDERS IE16 Introduction to the FactoryTalk Optix Portfolio	11:30 - 12:30
	Lunch	Lunch	Lunch	Lunch	Lunch	Lunch	
13:30 - 14:30		UNIVERSAL TRACK PT51 Fundamentals of EtherNet/IP Networking in an Industrial System	EXECUTIVE INSIGHTS PT58 Advancing from Automation to Autonomy in Automotive Manufacturing	OEMS & MACHINE BUILDERS IE97 PowerFlex Variable Frequency Drives Overview	EDGE-TO-ENTERPRISE SOLUTIONS IE81 Integrating FactoryTalk Analytics VisionAI and Plex QMS to Manage Visual Inspection	DIGITAL ENGINEERING CP03 Digital Engineering Customer Presentation 3	13:30 - 14:30
14:30 - 15:30		PROCESS SOLUTIONS PT53 Driving Process Excellence with PlantPax	CYBERSECURITY IE25 Secure Your Machine: The OEM's Role in Safeguarding the Connected Enterprise	OEMS & MACHINE BUILDERS PT62 OEMs: are you Ready for the New Machinery Regulation (EU)2023/1230?	MECHATRONICS & ROBOTICS PT15 How to Program an Independent Cart Technology Transport System	DIGITAL ENGINEERING PT12 Accelerate PLC Design with Industrial DevOps	14:30 - 15:30
	Break	Break	Break	Break	Break	Break	
16:00 - 17:00		UNIVERSAL TRACK PT06 The Shift from RSLinx Classic System to FactoryTalk Linx Communication Software	CYBERSECURITY PT55 Prioritize Operational Cyber Risk and drive a risk based Vulnerability Program	OEMS & MACHINE BUILDERS PT67 Embracing the Autonomous OEM: Building the Future Together	EDGE-TO-ENTERPRISE SOLUTIONS DT02 The New Industrial Frontier: Using AI to Scale Faster, Work Smarter, and Unlock New Value	DIGITAL ENGINEERING IE71 Innovating Food & Beverage Operations with Digital Twins to Deliver Global Expansion and Operational Excellence	16:00 - 17:00
17:00 - 18:00		CYBERSECURITY PT52 Asset Center: What is new in FTAC?			EDGE-TO-ENTERPRISE SOLUTIONS PT21 Unleashing Industrial Insights with FactoryTalk DataMosaix SaaS	EDGE-TO-ENTERPRISE SOLUTIONS PT66 Digital Engineering for Process Control: From Concept to Commissioning	17:00 - 18:00

ROOM	Bonn	Bristol	Colonia	Duesseldorf	Estrasburgo	Frankfurt	Londres	Lyon	ROOM
Time	Lab Sessions	Lab Sessions	Lab Sessions	Lab Sessions	Lab Sessions	Lab Sessions	Lab Sessions	Lab Sessions	Time
08:00 - 10:00	OEMS & MACHINE BUILDERS	OEMS & MACHINE BUILDERS	UNIVERSAL TRACK	OEMS & MACHINE BUILDERS	OEMS & MACHINE BUILDERS	OEMS & MACHINE BUILDERS	UNIVERSAL TRACK	OEMS & MACHINE BUILDERS	09:00 - 10:00
	L06 PowerFlex 755TS Drive: Advanced Features Hands-on Lab	L10 Integrated Motion on EtherNet/IP: Advanced Hands-On Lab	IL02 Introduction to Distributed HMI with FactoryTalk View Site Edition Software Hands-On Lab	L34 What's New in FactoryTalk View Site Edition Software Hands-On Lab	L19 Logix Integrated Safety Controller: Advanced Applications Hands-On Lab	L17 Improve Efficiency and Quality Through FactoryTalk Analytics LogixAI Soft Sensing Hands-On Lab	L38 ThinManager: Take a Deep Dive From the Visualization Edge Hands-On Lab	L36 Stratix Switches: Fundamentals Hands-On Lab	
	Break	Break	Break	Break	Break	Break	Break	Break	
10:30 - 12:30	OEMS & MACHINE BUILDERS	PROCESS SOLUTIONS	OEMS & MACHINE BUILDERS	OEMS & MACHINE BUILDERS	OEMS & MACHINE BUILDERS	INNOVATIONS		OEMS & MACHINE BUILDERS	10:30 - 12:30
	L05 PowerFlex 755TS Drive: Fundamentals Hands-On Lab	L03 Logix SIS: Implementing Safety Functions Hands-On Lab	IL06 Introduction to Logix Integrated Safety Controller Hands-On Lab	IL04 Introduction to Studio 5000 Logix Designer Application Basics	L35 Advance Your HMI Vision: FactoryTalk Optix Visualization Platform Hands-On Lab	L61 Design your own CUBIC Switchboard with Galaxy design Software Hands-On Lab	L38 (continued session)	L37 Stratix Switches: Advanced Hands-On Lab	
	Lunch	Lunch	Lunch	Lunch	Lunch	Lunch	Lunch	Lunch	
13:30 - 15:30	OEMS & MACHINE BUILDERS	OEMS & MACHINE BUILDERS	UNIVERSAL TRACK	UNIVERSAL TRACK	OEMS & MACHINE BUILDERS	OEMS & MACHINE BUILDERS	CYBERSECURITY	OEMS & MACHINE BUILDERS	13:30 - 15:30
	L06 PowerFlex 755TS Drive: Advanced Features Hands-on Lab	L10 Integrated Motion on EtherNet/IP: Advanced Hands-On Lab	IL08 Introduction to FactoryTalk AssetCentre Software Hands-On Lab	L81 FactoryTalk AssetCentre Advanced Hands-On Lab	L19 Logix Integrated Safety Controller: Advanced Applications Hands-On Lab	L26 Design Better Hybrid and Process Systems With Emulate3D Digital Twin Software Hands-On Lab	L01 Empowering Devices to Defend with CIP Security Hands-On Lab	L36 Stratix Switches: Fundamentals Hands-On Lab	
	Break	Break	Break	Break	Break	Break	Break	Break	
16:00 - 18:00	OEMS & MACHINE BUILDERS	PROCESS SOLUTIONS	EDGE-TO-ENTERPRISE SOLUTIONS	EDGE-TO-ENTERPRISE SOLUTIONS	OEMS & MACHINE BUILDERS	OEMS & MACHINE BUILDERS	UNIVERSAL TRACK	OEMS & MACHINE BUILDERS	16:00 - 18:00
	L05 PowerFlex 755TS Drive: Fundamentals Hands-On Lab	L03 Logix SIS: Implementing Safety Functions Hands-On Lab	IL07 Introduction to Data Capture for Manufacturing with FactoryTalk Historian Software Hands-On Lab	L22 Advanced Data Capture Methodologies for Manufacturing with FactoryTalk Historian Software Hands-On Lab	L30 Elevate your Application with FactoryTalk Optix Examples Hands-On Lab	L16 Automation System Design in the Cloud Using FactoryTalk Design Studio Hands-On Lab	IL09 Introduction to ThinManager Hands-On Lab	L37 Stratix Switches: Advanced Hands-On Lab	

ROOM	Marsella	Munich	Ocaña	Oxford	Paris	Santa Olalla	Burdeos	Toulouse	ROOM
Time	Lab Sessions	Lab Sessions	Lab Sessions	Lab Sessions	Lab Sessions	Lab Sessions	Demonstrations	Demonstrations	Time
08:00 - 10:00	OEMS & MACHINE BUILDERS	PROCESS SOLUTIONS		OEMS & MACHINE BUILDERS	OEMS & MACHINE BUILDERS		OEMS & MACHINE BUILDERS	OEMS & MACHINE BUILDERS	08:00 - 09:00
	L04 Advanced Machine Design with Connected Components Workbench Software Hands-On Lab	L14 FLEXHA 5000 I/O Hands-On Lab		L44 The Robot Programming Experience Hands-On Lab	L15 Studio 5000 Logix Designer: What's New and Next Steps Advanced Hands-On Lab		D06 How to Secure your Machine to Protect your Safety Functions Against Corruption	D11 How to Improve Plant Operations through Better HMI Graphics	09:00 - 10:00
	Break	Break	Break	Break	Break	Break	Break	Break	
10:30 - 12:30	OEMS & MACHINE BUILDERS	PROCESS SOLUTIONS	EDGE-TO-ENTERPRISE SOLUTIONS		OEMS & MACHINE BUILDERS		OEMS & MACHINE BUILDERS	OEMS & MACHINE BUILDERS	10:30 - 11:30
	IL03 Introduction to PointMax I/O: Experience How Simplicity and Performance Come Together in a Platform Hands-On Lab	L39 PlantPAx 5.40: Bulk Engineering for System Deployers Hands-On Lab	L25 Enable Condition-Based and Predictive Maintenance Using Industrial Protocols Hands-On Lab	L44 (continued session)	L42 Automate Your Engineering to Increase Productivity with APIs Hands-On Lab		D03 Kinetix Motion Control meets Simplified Analytics: Boost Machine Efficiency and Equipment Health	D15 FactoryTalk Optix Tips, Tricks & Application Insights	11:30 - 12:30
	Lunch	Lunch	Lunch	Lunch	Lunch	Lunch	Lunch	Lunch	
13:30 - 15:30	OEMS & MACHINE BUILDERS	PROCESS SOLUTIONS	UNIVERSAL TRACK	OEMS & MACHINE BUILDERS	OEMS & MACHINE BUILDERS		OEMS & MACHINE BUILDERS	OEMS & MACHINE BUILDERS	13:30 - 14:30
	L04 Advanced Machine Design with Connected Components Workbench Software Hands-On Lab	L14 FLEXHA 5000 I/O Hands-On Lab	L83 From Data to Decisions: Hands-on with FactoryTalk Energy Manager	L13 Accelerate Panel Design and Deployment Using the EtherNet/IP In-cabinet Solution Hands-On Lab	L41 Embedded Edge Compute Optimized for FactoryTalk Optix and Docker Hands-On Lab		D05 Lifetime of a Digital Twin	D07 System Software Architecture Design	14:30 - 15:30
	Break	Break	Break	Break	Break	Break	Break	Break	
16:00 - 18:00	OEMS & MACHINE BUILDERS	PROCESS SOLUTIONS			OEMS & MACHINE BUILDERS				16:00 - 18:00
	IL03 Introduction to PointMax I/O: Experience How Simplicity and Performance Come Together in a Platform Hands-On Lab	L40 Leveraging Engineering Workflows that Streamline PlantPAx System Development Hands-On Lab			L15 Studio 5000 Logix Designer: What's New and Next Steps Advanced Hands-On Lab				

ROOM	Manchester	Mora	Noblejas	Pedraza	Trujillo	Tudela	ROOM
Time	Presentations	Presentations	Presentations	Presentations	Presentations	Presentations	Time
08:00 - 09:00		UNIVERSAL TRACK PT06 The Shift from RSLinx Classic System to FactoryTalk Linx Communication Software	CYBERSECURITY PT56 Building the Right Foundation for the Factory of the Future	INNOVATIONS PT68 Working Intelligently with Galaxy Software (CUBIC)	EDGE-TO-ENTERPRISE SOLUTIONS PT19 Enable Condition-Based and Predictive Maintenance Using Industrial Protocols	OEMS & MACHINE BUILDERS IE16 Introduction to the FactoryTalk Optix Portfolio	08:00 - 09:00
09:00 - 10:00		CYBERSECURITY IE30 Advanced Examination of Ethernet Networking in Industrial Control Communications	UNIVERSAL TRACK PT60 Beyond DataReady: Enabling new Business Models and Enhancing Customer Value with Smart Machines	OEMS & MACHINE BUILDERS PT27 Wireless Condition Monitoring: New Products to Maximize Uptime	EDGE-TO-ENTERPRISE SOLUTIONS IE85 Navigating Uncertainty: Advanced Production Scheduling with Finite Scheduler		09:00 - 10:00
	Break	Break	Break	Break	Break	Break	
10:30 - 11:30		UNIVERSAL TRACK PT05 Expand your Automation System Possibilities Using FactoryTalk Linx Communication Software	CYBERSECURITY PT57 Plant-floor to DMZ: Key OT Security Trends and how Rockwell Automation Limits Risk		EDGE-TO-ENTERPRISE SOLUTIONS IE17 Introduction to OptixEdge: Redefining What is Possible at the Industrial Edge	OEMS & MACHINE BUILDERS IE07 What's New and What's Next with FactoryTalk Remote Access Solution: Overview, Architectures and Options	10:30 - 11:30
11:30 - 12:30		PROCESS SOLUTIONS PT53 Driving Process Excellence with PlantPAX	UNIVERSAL TRACK PT59 Improving Safety and Efficiency in Energy/O&G with RMIS Robotic Solutions		EDGE-TO-ENTERPRISE SOLUTIONS IE20 Scalable Visualization with Centralized Management	UNIVERSAL TRACK IE05 What's New and What's Next in the FactoryTalk View Software Portfolio: Refresh Your Insight	11:30 - 12:30
	Lunch	Lunch	Lunch	Lunch	Lunch	Lunch	
13:30 - 14:30		UNIVERSAL TRACK PT01 Enable Challenging Smart Operations with Industrial 5G	UNIVERSAL TRACK IE90 Maximizing Production and Profit with Pavilion8 Model Predictive Control at SABIC Gelsenkirchen	OEMS & MACHINE BUILDERS IE04 What's New and What's Next in Logix: Unlocking the ControlLogix 5590 Controller System Experience	EDGE-TO-ENTERPRISE SOLUTIONS IE31 Unlock Valuable Data Insights Trapped in Machines and Equipment with New DataReady Solution	DIGITAL ENGINEERING PT03 Emulate3D Digital Twin Software: What's New and What's Next	13:30 - 14:30
14:30 - 15:30		PROCESS SOLUTIONS PT54 The Value of Using Rockwell Automation Library of Process Objects	CYBERSECURITY IE55 The Value of Managed Security Services in OT Environments	OEMS & MACHINE BUILDERS PT63 Safety, Sensing and Industrial Control Linking Technology to Support SMART Solution	EDGE-TO-ENTERPRISE SOLUTIONS IE23 Maximize Your HMI Potential: Modernization Strategies for Success	OEMS & MACHINE BUILDERS IE06 What's New and What's Next in Visualization Software and Hardware Portfolio	14:30 - 15:30
	Break	Break	Break	Break	Break	Break	
16:00 - 18:00							16:00 - 18:00

CYBERSECURITY

L01 | Cybersecurity

Empowering Devices to Defend With CIP Security

One plant is down. Can you help secure the next? Learn how to help protect Rockwell Automation devices based on zero trust. Through instructor-led discussions, participants will learn about zone planning, certificate management strategies and how to implement CIP Security. Put the final configuration to the test with an instructor-led hacking demonstration. Gain practical experience highlighting the importance of implementing the last layer of defense for devices to help protect themselves.

Sub Track: Cybersecurity | Type: Hands-On Lab

Session Level: Advanced Training | Duration: 120 mins

Room: Londres | Capacity: 20 | No. of Occurrences: 3

IE11 | Cybersecurity

Navigating OT Cybersecurity Regulations

This session explores the shifting landscape of Operational Technology (OT) cybersecurity regulations and provides practical guidance for organizations. It covers key compliance priorities shaping OT security, strategic approaches for assessing regulatory applicability across operations, and practical methods for implementing robust policies that balance security with operational demands. You will gain actionable insights to navigate regulatory complexities while enhancing your organization's cybersecurity posture in critical infrastructure and industrial settings.

Sub Track: Cybersecurity | Type: Presentation

Session Level: General | Duration: 60 mins

Room: Mora | Capacity: 30 | No. of Occurrences: 2

IE25 | Cybersecurity

Secure Your Machine: The OEM's Role in Safeguarding The Connected Enterprise

Original Equipment Manufacturers (OEMs) are a vital part of securing The Connected Enterprise®. Through the machines they design, build and commission as well as the services they provide to End Users, they must ensure that security is ingrained in their DNA. Join us to discover how OEMs can safeguard their machines against emerging threats, achieving uninterrupted operations and peace of mind. Gain practical strategies to secure your assets in today's rapidly advancing digital landscape.

Sub Track: Cybersecurity | Type: Presentation

Session Level: General | Duration: 60 mins

Room: Noblejas | Capacity: 30 | No. of Occurrences: 2

IE30 | Cybersecurity

Advanced Examination of Ethernet Networking in Industrial Control Communications

This session will cover key information for IT and OT stakeholders to navigate the OT ecosystem, and support OT control engineers as they are challenged to meet operational needs. Advanced topics related to the often-overlooked Ethernet communications subsystem that links control applications with the underlying network layer infrastructure will be addressed. Gain insight that will help you establish cybersecurity policies for Ethernet-enabled industrial systems and explore how this critical layer enables scalable and reliable operations.

Sub Track: Networks & Infrastructure | Type: Presentation

Session Level: General | Duration: 60 mins

Room: Mora | Capacity: 30 | No. of Occurrences: 2

IE55 | Cybersecurity

The Value of Managed Security Services in OT Environments

In times of limited resources, manufacturers need partners to support cybersecurity initiatives. This session explores how Managed Security Services enhance efficiency and optimize performance in the OT space. Learn about key use cases in vulnerability management, security monitoring and response and incident response, aligned with the NIST Cybersecurity Framework. Discover how you can improve security posture, reduce costs and drive productivity through managed security services.

Sub Track: Cybersecurity | Type: Presentation

Session Level: General | Duration: 60 mins

Room: Noblejas | Capacity: 30 | No. of Occurrences: 2

PT52 | Cybersecurity

Asset Center: What is new in FTAC?

Explore the latest advancements in FactoryTalk® AssetCentre, Rockwell Automation's centralized solution for managing industrial automation assets. This session will spotlight the features in version 16, with a strong emphasis on security compliance and disaster recovery enhancements. You will gain insights into how these innovations support secure version control, vulnerability management, and streamlined asset tracking across complex industrial environments—positioning AssetCentre as a cornerstone for cybersecurity and operational resilience.

Sub Track: Asset Management | Type: Presentation

Session Level: General | Duration: 60 mins

Room: Mora | Capacity: 30 | No. of Occurrences: 2

PT55 | Cybersecurity

Prioritize Operational Cyber Risk and Drive a Risk-Based Vulnerability Program

Effective OT cybersecurity begins with contextual asset management, enabling organizations to identify, prioritize, and remediate their most critical risks. Discover how to build a more resilient OT security strategy by leveraging real-time, contextual visibility into assets and threats. Learn to develop an adaptive execution plan that evolves alongside your programs, teams, and processes, while keeping pace with an increasingly complex and intense threat landscape.

Sub Track: Cybersecurity | Type: Presentation

Session Level: General | Duration: 60 mins

Room: Noblejas | Capacity: 30 | No. of Occurrences: 2

PT56 | Cybersecurity

Building the Right Foundation for the Factory of the Future

The factory of the future is already here! To stay competitive in today's world, we need to embrace smart manufacturing. To enable this, a secure foundation is needed. This session will focus on implementing a secure network infrastructure and hosting capabilities required, and how to do this in a cost-effective and cyber-secure manner.

Sub Track: Cybersecurity | Type: Presentation

Session Level: General | Duration: 60 mins

Room: Noblejas | Capacity: 30 | No. of Occurrences: 2

PT57 | Cybersecurity

Plant Floor to DMZ: Key OT Security Trends and How Rockwell Automation Limits Risk

From ransomware on Level 3 historians, to firmware tampering in drives, and unmanaged VPNs in the DMZ, threats are closing in on every Purdue layer. In this session, Rockwell Automation reveals its latest capabilities in ongoing risk monitoring, patch orchestration and incident response dovetailed with software and control solutions. Learn how to develop a defense-in-depth blueprint that protects, operates and optimizes industrial assets end to end.

Sub Track: Cybersecurity | Type: Presentation

Session Level: General | Duration: 60 mins

Room: Noblejas | Capacity: 30 | No. of Occurrences: 2

DIGITAL ENGINEERING

IE34 | Digital Engineering

FactoryTalk Design Studio in the Cloud to Increase System Design Efficiency

Learn how automation system design in the cloud modernizes your development efforts with collaborative workflows, integrated libraries and version control, and generative AI. FactoryTalk® Design Studio™ delivers all this and more. Come and see how we're innovating so you can too.

Sub Track: Design Software | Type: Presentation

Session Level: General | Duration: 60 mins

Room: Tudela | Capacity: 30 | No. of Occurrences: 2

IE38 | Digital Engineering

Transform Your Digital Engineering Processes with Emulate3D Digital Twin Software

Learn how businesses are using Emulate3D® software to stay at the forefront of automated-system design and commissioning, building resilience and agility into their systems with this advanced simulation and virtual commissioning platform. See how this groundbreaking software is used for simulating and emulating manufacturing, material handling and process/hybrid systems all in one place. Explore how you can take more control of your future, using modern DevOps and factory-scale virtual commissioning to navigate the challenges of developing complex automated systems.

Sub Track: Digital Transformation Strategy | Type: Presentation

Session Level: General | Duration: 60 mins

Room: Tudela | Capacity: 30 | No. of Occurrences: 2

IE71 | Digital Engineering

Innovating Food & Beverage Operations with Digital Twins to Deliver Global Expansion and Operational Excellence

Hear how a global food & beverage leader demonstrated the transformative impact of digital twin technology in driving innovation and operational excellence. By modeling and cataloging production lines, you'll learn how the company supported its expansion internationally and launched a digital twin for a new facility in North America. This initiative used virtual commissioning and simulation real-time optimization, showcasing how digital twins are revolutionizing operations and enabling scalable growth.

Sub Track: Digital Transformation Strategy | Type: Presentation

Session Level: General | Duration: 60 mins

Room: Tudela | Capacity: 30 | No. of Occurrences: 2

PT03 | Digital Engineering

Emulate3D Digital Twin Software: What's New and What's Next

Join us to discover how the latest developments in Emulate3D™ digital twin software continue to drive you to the forefront of digital engineering. Learn how Emulate3D™ v18 puts you in greater control of your future with modern DevOps tools and advanced factory-scale testing capabilities. Get a firsthand look at how you can take advantage of the powerfully upgraded and brand-new utilities Emulate3D™ v18 delivers.

Sub Track: Digital Transformation Strategy | **Type:** Presentation
Session Level: General | **Duration:** 60 mins
Room: Tudela | **Capacity:** 30 | **No. of Occurrences:** 2

PT12 | Digital Engineering

Accelerate PLC Design with Industrial DevOps

Industrial DevOps is reshaping the way that the industry thinks about the design and testing lifecycle of software by adopting common software engineering practices for the OT space. Explore how continuous integration and collaborative workflows are driving efficiency and innovation. Whether you're a seasoned pro or new to the concept, learn how Studio 5000 Logix Designer® SDK, along with Jenkins and GIT, enables one solution for accelerated design cycles.

Sub Track: Design Software | **Type:** Presentation
Session Level: General | **Duration:** 60 mins
Room: Tudela | **Capacity:** 30 | **No. of Occurrences:** 2

PT65 | Digital Engineering

Accelerating Robotics and Mechatronics Innovation through Digital Engineering

Digital engineering tools like simulation, model-based design, and virtual commissioning are reshaping how robotics and mechatronics systems are developed. This session highlights how these technologies streamline design, accelerate validation, and reduce time-to-market—enabling smarter, more agile innovation.

Sub Track: Digital Transformation Strategy | **Type:** Presentation
Session Level: General | **Duration:** 60 mins
Room: Tudela | **Capacity:** 30 | **No. of Occurrences:** 2

PT66 | Digital Engineering

Digital Engineering for Process Control: From Concept to Commissioning

Learn how automation system design in the cloud modernizes your development efforts with collaborative workflows, integrated libraries and version control, and generative AI. FactoryTalk® Design Studio™ delivers all this and more. Come and see how we're innovating so you can too.

Sub Track: Digital Transformation Strategy | **Type:** Presentation
Session Level: General | **Duration:** 60 mins
Room: Tudela | **Capacity:** 30 | **No. of Occurrences:** 2

CP01 | Digital Engineering

Digital Engineering Customer Presentation 1

Full description coming soon.

Sub Track: Digital Transformation Strategy | **Type:** Presentation
Session Level: General | **Duration:** 60 mins
Room: Tudela | **Capacity:** 30 | **No. of Occurrences:** 1

CP02 | Digital Engineering

Digital Engineering Customer Presentation 2

Full description coming soon.

Sub Track: Digital Transformation Strategy | **Type:** Presentation
Session Level: General | **Duration:** 60 mins
Room: Tudela | **Capacity:** 30 | **No. of Occurrences:** 1

CP03 | Digital Engineering

Digital Engineering Customer Presentation 3

Full description coming soon.

Sub Track: Digital Transformation Strategy | **Type:** Presentation
Session Level: General | **Duration:** 60 mins
Room: Tudela | **Capacity:** 30 | **No. of Occurrences:** 1

EDGE-TO-ENTERPRISE INFORMATION SOLUTIONS

IL07 | Edge-to-Enterprise Information Solutions

Introduction to Data Capture for Manufacturing with FactoryTalk Historian Software

Access to historical data is critical to analyzing and optimizing your manufacturing process. This lab introduces the fundamentals of collecting, storing, analyzing, and visualizing data using a robust data-capturing engine.

Sub Track: Data Operations & Analytics | **Type:** Hands-On Lab
Session Level: Advanced Training | **Duration:** 120 mins
Room: Colonia | **Capacity:** 30 | **No. of Occurrences:** 3

L22 | Edge-to-Enterprise Information Solutions

Advanced Data Capture Methodologies for Manufacturing with FactoryTalk Historian Software

You have learned how to capture, store and analyze manufacturing data in the Introduction to Data Capture Lab. This lab will help you understand how you can contextualize and optimize your data by setting up a comprehensive asset framework, redundant interfaces and leverage plug-in tools like datalink for advanced computations. This will help you measure the true state of your machines, while also leveraging FactoryTalk® Historian notification capabilities to help inform key operators when thresholds are reached or exceeded.

Sub Track: Data Operations & Analytics | **Type:** Hands-On Lab
Session Level: Advanced Training | **Duration:** 120 mins
Room: Duesseldorf | **Capacity:** 30 | **No. of Occurrences:** 3

L23 | Edge-to-Enterprise Information Solutions

Advanced DataOps with FactoryTalk DataMosaix Platform

Explore the advanced capabilities of the FactoryTalk® DataMosaix™ application with this specialized lab. Ideal for experienced users or those seeking comprehensive insights, it showcases cutting-edge features and customizable options tailored to complex needs.

Sub Track: Digital Transformation Strategy | **Type:** Hands-On Lab
Session Level: Advanced Training | **Duration:** 120 mins
Room: Ocaña | **Capacity:** 20 | **No. of Occurrences:** 2

L24 | Edge-to-Enterprise Information Solutions

Industrial DataOps with FactoryTalk DataMosaix

Make complex industrial data work for you. This hands-on lab shows how the FactoryTalk® DataMosaix™ application integrates and contextualizes OT, IT and engineering data across the enterprise to be useful in the data-driven applications and analytics your business needs. Also, see how the FactoryTalk® Energy Manager™ application leverages contextualized energy, production and process data from the FactoryTalk DataMosaix application to accelerate your sustainability programs.

Sub Track: Digital Transformation Strategy | **Type:** Hands-On Lab
Session Level: Advanced Training | **Duration:** 120 mins
Room: Ocaña | **Capacity:** 20 | **No. of Occurrences:** 2

L25 | Edge-to-Enterprise Information Solutions

Enable Condition-Based and Predictive Maintenance Using Industrial Protocols

Explore a day in the life of a machine-to-cloud predictive maintenance operation. This hands-on lab will demonstrate how your machines integrate to Fiix® CMMS and Asset Risk Predictor (ARP) through Rockwell Automation OT solutions like FactoryTalk® Optix™. You will see how easy it is to connect machine data from FactoryTalk Optix to Fiix, identify a risk in ARP, troubleshoot a critical alarm and get your assets back up and running.

Sub Track: Digital Transformation Strategy | **Type:** Hands-On Lab
Session Level: Advanced Training | **Duration:** 120 mins
Room: Ocaña | **Capacity:** 20 | **No. of Occurrences:** 2

L28 | Edge-to-Enterprise Information Solutions

Leveraging the Plex Digital Work Instruction Suite

For many companies, production operators come and go like a revolving door. Even for companies with a stable workforce, ensuring the operator understands the work to be done is vital to maintaining quality and efficiency. Our latest product suite, Digital Work Instructions, part of our Connected Worker offerings, guides production setup technicians and operators through the steps required to complete a part operation, as well as the ability to verify they have completed them. See how you can then automate work instructions through seamless integration to Plex MES A&O by defining parameters and setpoints to automatically validate task completion and progression. In this hands-on lab, you will have the opportunity to experience the capabilities of this solution firsthand, helping you make an informed decision on whether this product suite is a good fit for your organization. Don't miss out on this opportunity to help error-proof your operations and boost efficiency.

Sub Track: Digital Transformation Strategy | **Type:** Hands-On Lab
Session Level: Advanced Training | **Duration:** 120 mins
Room: Santa Olalla | **Capacity:** 20 | **No. of Occurrences:** 2

L29 | Edge-to-Enterprise Information Solutions

Finite Scheduler Boot Camp

This session will provide you with practical skills and knowledge to effectively use the Finite Scheduler software for optimizing production processes. You will be introduced to the fundamentals of production scheduling. In addition, you will learn how to practically apply production scheduling concepts through the configuration of Finite Scheduler and the application of some of the advanced scheduling capabilities in Finite Scheduler.

Sub Track: Digital Transformation Strategy | **Type:** Hands-On Lab
Session Level: Advanced Training | **Duration:** 120 mins
Room: Santa Olalla | **Capacity:** 20 | **No. of Occurrences:** 2

L31 | Edge-to-Enterprise Information Solutions

Build Your First Automation: Plex Process Flows

This session introduces you to process flows, which is Plex's powerful no-code automation engine. You will create a real-time flow that monitors business data, performs logic-based decisions, and orchestrates system changes — all without writing a single line of code. Along the way, you'll learn how to use the drag-and-drop designer, configure flow steps, monitor execution history and debug logic with visual playback. Perfect for business analysts and IT professionals looking to streamline operations.

Sub Track: Digital Transformation Strategy | **Type:** Hands-On Lab
Session Level: Advanced Training | **Duration:** 120 mins
Room: Santa Olalla | **Capacity:** 20 | **No. of Occurrences:** 2

IE17 | Edge-to-Enterprise Information Solutions

Introduction to OptixEdge: Redefining What is Possible at the Industrial Edge

In this session, we will explore how OptixEdge™ is redefining possibilities at the edge. Discover how this powerhouse device can seamlessly collect, process and deliver data to the cloud while providing flawless web visualization using the intuitive Wizard Application or FactoryTalk® Optix Studio™. Experience the unmatched flexibility of deploying containerized applications with Docker Engine. Lastly, learn to manage and troubleshoot devices on the machine subnetwork effortlessly with FactoryTalk® Remote Access™ solution.

Sub Track: Digital Transformation Strategy | **Type:** Presentation
Session Level: General | **Duration:** 60 mins
Room: Trujillo | **Capacity:** 30 | **No. of Occurrences:** 2

IE20 | Edge-to-Enterprise Information Solutions

Scalable Visualization with Centralized Management

We provide both IT and OT the ability to securely manage and scale visualization systems with ThinManager® from machine level and beyond. Learn how to capitalize on your investment in FactoryTalk® View SE with ThinManager®, and how we are leveraging modern technologies like docker containers and innovative design tools in FactoryTalk® Optix™ to decrease downtime and maximize productivity.

Sub Track: Scalable Control & Visualization | **Type:** Presentation
Session Level: General | **Duration:** 60 mins
Room: Trujillo | **Capacity:** 30 | **No. of Occurrences:** 2

IE22 | Edge-to-Enterprise Information Solutions

Connected Worker — Lean Collaboration: Building the Digital Continuous Improvement Engine

Unlock a new era of continuous improvement with Plex by Rockwell Automation's lean collaboration solution. See how real-time alarms and PLC triggers generate actionable tasks, how you can connect teams via embedded chat and how you can drive performance with key performance indicators. Learn how this digital engine enhances lean practices without replacing your existing automation — turning insight into action, faster.

Sub Track: Digital Transformation Strategy | **Type:** Presentation
Session Level: General | **Duration:** 60 mins
Room: Trujillo | **Capacity:** 30 | **No. of Occurrences:** 2

IE23 | Edge-to-Enterprise Information Solutions

Maximize Your HMI Potential: Modernization Strategies for Success

Digital transformation, edge-to-cloud and modernization are important concepts to recognize when developing a forward-looking strategy for your automation system. Join us for a deep dive into the capabilities of a next-generation HMI system. Whether you are looking to replace or augment your existing system, analyze the data that exists in your system, or are looking for tools that will help save time, this session will shine a light on new technology to address those needs.

Sub Track: Scalable Control & Visualization | **Type:** Presentation
Session Level: General | **Duration:** 60 mins
Room: Trujillo | **Capacity:** 30 | **No. of Occurrences:** 2

IE31 | Edge-to-Enterprise Information Solutions

Unlock Valuable Data Insights Trapped in Machines and Equipment with New DataReady Solution

Attend and see demonstrations on DataReady™ solutions that enable you to harness the power of contextualized machine data that is organized, flexible and easy-to-use:

- Benefit from a data foundation that's flexible to the needs of today and whatever tomorrow brings
- Differentiate with data-driven, intuitive equipment and the ability to seamlessly egress data into other systems
- Drive continuous improvement with machine performance and reliability insights from aggregated and organized data

Sub Track: Data Operations & Analytics | **Type:** Presentation
Session Level: General | **Duration:** 60 mins
Room: Trujillo | **Capacity:** 30 | **No. of Occurrences:** 2

IE49 | Edge-to-Enterprise Information Solutions

Machine Vision: AI-Powered Quality Inspections for Better Manufacturing Efficiency

Product quality drives customer loyalty, brand strength and profitability. AI-powered machine vision is transforming quality control, defect detection and process monitoring. Learn how FactoryTalk® Analytics™ VisionAI™, a no-code SaaS solution, helps reduce defects and boost efficiency. This session explores real-world use cases, implementation strategies and how AI-driven anomaly detection powers process optimization and predictive maintenance.

Sub Track: Data Operations & Analytics | **Type:** Presentation
Session Level: General | **Duration:** 60 mins
Room: Trujillo | **Capacity:** 30 | **No. of Occurrences:** 2

IE57 | Edge-to-Enterprise Information Solutions

Traditional AI and Generative AI: A Powerful Convergence Transforming Manufacturing

Leaders face a crucial question — Which AI technology fits which operational challenge? This session provides a practical framework for matching AI capabilities to specific needs. We'll clarify how to apply traditional machine learning when causal AI adds unique value, and where generative AI delivers the greatest impact. We'll share implementation lessons from client examples to help you create a roadmap that matches the right AI to the right problems, turning potential into measurable results.

Sub Track: Data Operations & Analytics | **Type:** Presentation
Session Level: General | **Duration:** 60 mins
Room: Trujillo | **Capacity:** 30 | **No. of Occurrences:** 2

IE81 | Edge-to-Enterprise Information Solutions

Integrating FactoryTalk Analytics VisionAI and Plex QMS to Manage Visual Inspection

Visual inspection is 87% effective and requires seven layers of inspection to achieve 100% inspection. To alleviate the inaccuracy and ineffectiveness of visual inspection Plex QMS and FactoryTalk® Analytics™ VisionAI™ can communicate product requirements and inspection results, storing the completed data in Plex QMS. This session reviews how the solutions work together to provide accurate, real-time inspection results and remove the inefficiencies that affect visual inspection.

Sub Track: Digital Transformation Strategy | **Type:** Presentation
Session Level: General | **Duration:** 60 mins
Room: Trujillo | **Capacity:** 30 | **No. of Occurrences:** 2

IE85 | Edge-to-Enterprise Information Solutions

Navigating Uncertainty: Advanced Production Scheduling with Finite Scheduler

In today's turbulent business landscape, companies face unprecedented challenges in maintaining efficient production schedules. Production scheduling systems are the central nervous system of every manufacturing organization. It is one of the connective tissues enabling the connected workforce, and it is critical in achieving that the activities of the workforce are organized to maximize production outcomes. This session will explore the potential of Finite Scheduler to empower a connected workforce and maximize organizational adaptability under conditions of high turbulence.

Sub Track: Digital Transformation Strategy | **Type:** Presentation
Session Level: General | **Duration:** 60 mins
Room: Trujillo | **Capacity:** 30 | **No. of Occurrences:** 2

PT19 | Edge-to-Enterprise Information Solutions

Enable Condition-Based and Predictive Maintenance Using Industrial Protocols

Make complex industrial data work for you. This hands-on Discover how to get machine status and meter readings into Fiix® CMMS and predictive maintenance solution Fiix® Asset Risk Predictor (ARP). Using FactoryTalk® Optix™ and our open and agnostic API to connect to any common PLC hardware, historian databases, SCADA systems, industrial protocols such as OPC UA, EtherNet/IP, HTTPS, MQTT and Modbus TCP/IP, send asset data to your CMMS or ARP, or have operators access CMMS data via the HMI. This session will showcase specific connectors pre-built in the FactoryTalk® Optix™ library and Fiix® Azure cloud solution.

Sub Track: Digital Transformation Strategy | **Type:** Presentation
Session Level: General | **Duration:** 60 mins
Room: Trujillo | **Capacity:** 30 | **No. of Occurrences:** 2

PT21 | Edge-to-Enterprise Information Solutions

Unleashing Industrial Insights with FactoryTalk DataMosaix SaaS

FactoryTalk® DataMosaix™ SaaS revolutionizes Industrial DataOps by seamlessly integrating IT, OT and ET data, breaking silos for actionable insights. Paired with FactoryTalk® Optix™, PlantPAx® and other systems, it enables analytics, visualization and decision-making across operations.

Sub Track: Digital Transformation Strategy | **Type:** Presentation
Session Level: General | **Duration:** 60 mins
Room: Trujillo | **Capacity:** 30 | **No. of Occurrences:** 2

DT02 | Edge-to-Enterprise Information Solutions

The New Industrial Frontier: Using AI to Scale Faster, Work Smarter, and Unlock New Value

Industrial companies across every sector have an opportunity to reimagine operations by blending human expertise with AI. In this new frontier, Microsoft Fabric, Adaptive Cloud, and Rockwell Automation FactoryTalk® DataMosaix™ enable enterprise-scale analytics tailored to plant and line operators. Learn how Industrial AI collaboration and orchestration amplify productivity, product quality, and adaptability—helping organizations tackle today's challenges while accelerating innovation.

Sub Track: Digital Transformation Strategy | **Type:** Presentation
Session Level: General | **Duration:** 60 mins
Room: Trujillo | **Capacity:** 30 | **No. of Occurrences:** 2

EXECUTIVE INSIGHTS

IE53 | Executive Insights

AI and Analytics Powering the Future of Energy Management

Discover how AI, analytics and model predictive control (MPC) technologies are reshaping energy management in manufacturing. Explore three real-world case studies showcasing increased efficiency and sustainability.

Sub Track: Manufacturing AI | **Type:** Presentation
Session Level: General | **Duration:** 60 mins
Room: Noblejas | **Capacity:** 30 | **No. of Occurrences:** 2

PT58 | Executive Insights

Advancing from Automation to Autonomy in Automotive Manufacturing

Facing rising tariffs, new regulations, and CapEx constraints, the automotive industry is under pressure to reduce costs and improve quality. These challenges have created a pressing need to move beyond automation to autonomy. Hear how leading manufacturers enable autonomous quality and maintenance using machine learning, prescriptive models, and closed-loop control – delivering measurable gains in labor efficiency, cost reduction, and performance.

Sub Track: Digital Transformation Strategy | **Type:** Presentation
Session Level: General | **Duration:** 60 mins
Room: Noblejas | **Capacity:** 30 | **No. of Occurrences:** 2

INNOVATIONS

L61 | Innovations

Design Your Own CUBIC Switchboard with Galaxy Design Software

Join this hands-on lab to learn how to design a CUBIC Modular switchboard with its powerful Design Software, Galaxy. Whether you're new to IEC standards or have some experience, this session will guide you step-by-step through the entire design process. By the end of the session, you'll have successfully created a simple, fully designed power distribution switchboard on the CUBIC Modular Switchboard System.

Sub Track: Industrial Control | **Type:** Hands-On Lab
Session Level: Advanced Training | **Duration:** 120 mins
Room: Frankfurt | **Capacity:** 30 | **No. of Occurrences:** 1

IE32 | Innovations

Introducing PointMax I/O: Help Elevate your Integrated Architecture Experience

Ready to level up? Come and get acquainted with PointMax™ I/O, our latest distributed I/O offering in the slice form factor, designed with simplicity and performance in mind. PointMax™ I/O further enhances your Integrated Architecture® system with an extensive portfolio to meet varied industry needs while providing an unrivaled, improved user experience. See firsthand how easy it is to design, install and maintain this new I/O platform and envision it in your machine or system.

Sub Track: Industrial Control | **Type:** Presentation
Session Level: General | **Duration:** 60 mins
Room: Pedraza | **Capacity:** 30 | **No. of Occurrences:** 2

PT64 | Innovations

Arc Safety that Pays Off: Active & Passive Mitigation with FLEXLINE 3500 Motor Control Center

Reduce risk, protect people, and keep production online. Learn how the FLEXLINE 3500 brings together passive containment and active mitigation for a smarter, safer plant.

Sub Track: Safety Solutions | **Type:** Presentation
Session Level: General | **Duration:** 60 mins
Room: Pedraza | **Capacity:** 30 | **No. of Occurrences:** 1

PT68 | Innovations

Working Intelligently with Galaxy Software (CUBIC)

Explore key strategies for designing an IEC Switchboard/ Switchgear or Motor Control Center with our Design Software Galaxy. Learn how to decrease your design time and increase your efficiency by applying various tips and tricks in our flexible software. Ideally you already have some experience and are interested in fully exploring the capabilities. Whether you're already familiar with the process or just beginning your journey, we'll equip you to design with confidence and precision.

Sub Track: Industrial Control | **Type:** Presentation
Session Level: General | **Duration:** 60 mins
Room: Pedraza | **Capacity:** 30 | **No. of Occurrences:** 2

MECHATRONICS & ROBOTICS

IE02 | Mechatronics & Robotics

What's New and What's Next in Independent Cart Technology

We've had a lot of updates in the independent cart technology (ICT) portfolio. New products, new tools and new software all combine to take your ICT system to the next level and give you capabilities that you never had before. In this session, we'll walk you through the newest members of the ICT family and some new applications they enable, as well as enhancements we've made to the software to allow you to get more out of your current systems. We'll show you new tools that make sizing and simulating an iTRAK® easier than ever. We'll talk about what the product lifecycle looks like and where it might make sense to start changing over to the newer hardware. Finally, we'll give you a sneak peek into what we're working on next to allow you to take your ICT systems even further. There will also be a Q&A session at the end for you to ask all your ICT questions and talk to us about any application ideas.

Sub Track: Advanced Motion and Robotics | **Type:** Presentation
Session Level: General | **Duration:** 60 mins
Room: Mora | **Capacity:** 30 | **No. of Occurrences:** 1

PT08 | Mechatronics & Robotics

How to Design Industrial Robot Applications

Integrated robots improve deployments and create smarter machines. Join this session and learn about the transformative effects of integrating robotics into your manufacturing, how it is not as complex as it seems and how to choose the right robot control option.

Sub Track: Advanced Motion and Robotics | **Type:** Presentation
Session Level: General | **Duration:** 60 mins
Room: Mora | **Capacity:** 30 | **No. of Occurrences:** 1

PT15 | Mechatronics & Robotics

How to Program an Independent Cart Technology Transport System

It's time to program an independent cart technology (ICT) system you are about to install – now what? In this session, we'll go over how to take a track or facility layout and convert that to a program using our Application Code Manager Libraries. We'll discuss how to identify stations and what areas of the track you need to control and which you can leave to us. We will plan vehicle flow and use that flow to help design your station logic and make decisions. Finally, we'll talk through handling abnormal situations like machine down, test rejects and maintenance and how to recover from those situations. This will be an interactive discussion, as we work through an example system and its programming together. Once you have the plan, the programming follows.

Sub Track: Advanced Motion and Robotics | **Type:** Presentation
Session Level: General | **Duration:** 60 mins
Room: Trujillo | **Capacity:** 30 | **No. of Occurrences:** 2

OEMS & MACHINE BUILDERS

IL01 | OEMs & Machine Builders

Introduction to FactoryTalk Design Workbench: Develop a Standalone Machine Application

Demo the new FactoryTalk® Design Workbench™ software to program a Micro870® controller application. Use the familiar user interface and consistent Rockwell Automation software user experience with the same project organizer and uniform ladder code illustration. Discover the power of this micro control software and its enhanced performance to reduce download/upload time for creating, building and testing programs.

Sub Track: Design Software | **Type:** Hands-On Lab
Session Level: Advanced Training | **Duration:** 120 mins
Room: Marsella | **Capacity:** 20 | **No. of Occurrences:** 3

IL03 | OEMs & Machine Builders

Introduction to PointMax I/O: Experience How Simplicity and Performance Come Together in a Platform

Experience the new PointMax™ I/O platform. Learn what we mean by maximum design freedom and take the opportunity to configure different I/O module types from our extensive portfolio that provides flexibility for diverse application needs. See how PointMax I/O can help elevate your Integrated Architecture® experience via Premier Integration. Discover how digital tools like Integrated Architecture Builder can help save time, and accelerate time to market.

Sub Track: Industrial Control | **Type:** Hands-On Lab
Session Level: Advanced Training | **Duration:** 120 mins
Room: Marsella | **Capacity:** 15 | **No. of Occurrences:** 7

IL04 | OEMs & Machine Builders

Introduction to Studio 5000 Logix Designer Application Basics

Join this lab for hands-on learning of the basic programming practices for Logix Controllers with Studio 5000® Logix Designer application. This introductory course will build a foundation for Logix programming as well as introduce attendees to the Studio 5000® platform.

Sub Track: Industrial Control | **Type:** Hands-On Lab
Session Level: Advanced Training | **Duration:** 120 mins
Room: Duesseldorf | **Capacity:** 30 | **No. of Occurrences:** 3

IL05 | OEMs & Machine Builders

Introduction to FactoryTalk Optix Visualization Platform

Discover the powerful features of open, scalable visualization. In this lab, learn how you can rapidly design and deploy projects with FactoryTalk® Optix Studio™, using object-oriented principles and the latest design concepts.

Sub Track: Operations Management Software | **Type:** Hands-On Lab
Session Level: Advanced Training | **Duration:** 120 mins
Room: Estrasburgo | **Capacity:** 40 | **No. of Occurrences:** 3

IL06 | OEMs & Machine Builders

Introduction to Logix Integrated Safety Controller

Join us for an immersive, hands-on learning experience as we introduce you to the fundamentals of Logix controllers with integrated safety. This lab-based training offers a comprehensive overview of the architecture, operation, programming and troubleshooting aspects of Logix safety controllers.

Sub Track: Safety Solutions | **Type:** Hands-On Lab
Session Level: Advanced Training | **Duration:** 120 mins
Room: Colonia | **Capacity:** 30 | **No. of Occurrences:** 3

L04 | OEMs & Machine Builders

Advanced Machine Design with Connected Components Workbench Software

Discover digital engineering for Micro800™ controllers by experiencing Connected Components Workbench™ software capabilities such as the Micro800™ simulator, MQTT connectivity for IIoT and Ethernet implicit I/O messaging integration for Micro800™ controllers with Kinetix® 5100 and PowerFlex® 520 drives.

Sub Track: Design Software | **Type:** Hands-On Lab
Session Level: Advanced Training | **Duration:** 120 mins
Room: Marsella | **Capacity:** 20 | **No. of Occurrences:** 3

L05 | OEMs & Machine Builders

PowerFlex 755TS Drive: Fundamentals

Gain foundational knowledge on configuring and starting up the PowerFlex® 755T drive, and learn how to integrate it with Connected Components Workbench™ and Studio 5000™ Logix Designer. The session also covers Automatic Device Configuration and advanced predictive maintenance capabilities.

Sub Track: Smart Motor Control | **Type:** Hands-On Lab
Session Level: Advanced Training | **Duration:** 120 mins
Room: Bonn | **Capacity:** 12 | **No. of Occurrences:** 6

L06 | OEMs & Machine Builders

PowerFlex 755TS Drive: Advanced Features

Explore advanced features of PowerFlex® 755TS AC drives with TotalFORCE® technology. In this hands-on lab, you will learn about permanent magnet motor control, adaptive tuning, load observer, integrated motion control and more.

Sub Track: Smart Motor Control | **Type:** Hands-On Lab
Session Level: Advanced Training | **Duration:** 120 mins
Room: Bonn | **Capacity:** 12 | **No. of Occurrences:** 6

L09 | OEMs & Machine Builders

Integrated Motion on EtherNet/IP: Fundamentals

In this lab, you will explore the key features and capabilities of a Kinetix® integrated motion on Ethernet/IP solution. You will see how easy it is to create and deploy a motion system by configuring, commissioning, programming and troubleshooting a Kinetix integrated motion application using Studio 5000 Logix Designer®.

Sub Track: Smart Motor Control | **Type:** Hands-On Lab
Session Level: Advanced Training | **Duration:** 120 mins
Room: Bristol | **Capacity:** 24 | **No. of Occurrences:** 3

L10 | OEMs & Machine Builders

Integrated Motion on EtherNet/IP: Advanced

In this lab, you will explore the key features and capabilities of a Kinetix® integrated motion solution on Ethernet/IP. Choose the topics that interest you most. New modules such as master-driven speed control, indirect axis addressing, overtravel management and output cam and soft registration, or popular established modules like virtual torque sensor, axis test mode and 64-bit cam data capability, position camming and enhanced position camming (with merging features), advanced tuning and advanced safety.

Sub Track: Smart Motor Control | **Type:** Hands-On Lab
Session Level: Advanced Training | **Duration:** 120 mins
Room: Bristol | **Capacity:** 24 | **No. of Occurrences:** 6

L13 | OEMs & Machine Builders

Accelerate Panel Design and Deployment Using the EtherNet/IP In-Cabinet Solution

Discover how to simplify configuration, commissioning, and troubleshooting with the new EtherNet/IP In-cabinet solution. In this hands-on lab, you'll build and set up a network using the new flat media cable and use Studio 5000 Logix Designer® to easily deploy and diagnose your system.

Sub Track: Industrial Control | **Type:** Hands-On Lab
Session Level: Advanced Training | **Duration:** 120 mins
Room: Oxford | **Capacity:** 20 | **No. of Occurrences:** 4

L15 | OEMs & Machine Builders

Studio 5000 Logix Designer: What's New and Next Steps Advanced

This lab will build on foundational concepts in Logix programming and explore more advanced workflows and programming concepts. The lab provides hands-on learning for advanced Studio 5000 Logix Designer® programming.

Sub Track: Design Software | **Type:** Hands-On Lab
Session Level: Advanced Training | **Duration:** 120 mins
Room: Paris | **Capacity:** 40 | **No. of Occurrences:** 4

L16 | OEMs & Machine Builders

Automation System Design in the Cloud Using FactoryTalk Design Studio

Join us in this hands-on lab to experience how we're bringing modern software development efficiency to control system design. Discover how cloud collaboration enhances teamwork and accelerates productivity. Learn how generative AI can save time in your existing system design processes, and we'll answer your questions on how cloud-based design can help you deliver value now, and in the future.

Sub Track: Design Software | **Type:** Hands-On Lab
Session Level: Advanced Training | **Duration:** 120 mins
Room: Frankfurt | **Capacity:** 30 | **No. of Occurrences:** 3

L17 | OEMs & Machine Builders

Improve Efficiency and Quality Through FactoryTalk Analytics LogixAI Soft Sensing

Join us to get firsthand experience of using AI to develop models to help you better understand your production performance. You will have the opportunity to use FactoryTalk® Analytics™ LogixAI® to build a Soft Sensor® model that predicts a key system variable. Then we'll show you how the Soft Sensor models can be applied to address critical operational challenges such as improving quality and increasing throughput.

Sub Track: Manufacturing AI | **Type:** Hands-On Lab
Session Level: Advanced Training | **Duration:** 120 mins
Room: Frankfurt | **Capacity:** 30 | **No. of Occurrences:** 3

L19 | OEMs & Machine Builders

Logix Integrated Safety Controller: Advanced Applications

Learn how a machine safety system with GuardLogix® safety controllers can support dynamic safety functions to monitor speed and position in a more collaborative machine design. In this lab session we will demonstrate how a single controller is used for safety, standard and motion control. Highlighted products include the GuardLogix® integrated safety controller, FactoryTalk® Logix Echo software, and Kinetix® 5700-ERS4 with axis test mode. The new Studio 5000® version 36 safety signature element version control capability will also be demonstrated.

Sub Track: Safety Solutions | **Type:** Hands-On Lab
Session Level: Advanced Training | **Duration:** 120 mins
Room: Estrasburgo | **Capacity:** 40 | **No. of Occurrences:** 4

L26 | OEMs & Machine Builders

Design Better Hybrid and Process Systems with Emulate3D Digital Twin Software

Make a mess in the model, not on the plant floor. With Emulate3D® digital twin software, designing hybrid and process systems has never been easier. In this lab, we'll use the tanks and pipes catalog to build a fluid system, simulate a complex process and test out control strategies with emulation.

Sub Track: Digital Transformation Strategy | **Type:** Hands-On Lab
Session Level: Advanced Training | **Duration:** 120 mins
Room: Frankfurt | **Capacity:** 30 | **No. of Occurrences:** 3

L27 | OEMs & Machine Builders

Design Better Discrete Systems with Emulate3D Digital Twin Software

Save time and reduce errors when designing and commissioning your next discrete control system. In this lab, we will use Emulate3D® digital twin to design and test an example automotive conveyor skid system using Allen-Bradley® PowerFlex® drive emulators, 1734 Point I/O emulators, CIP Safety and 3D control panel visuals. We will also design a testing scenario and diagnostic report using the new Emulate3D® Fault Framework.

Sub Track: Digital Transformation Strategy | **Type:** Hands-On Lab
Session Level: Advanced Training | **Duration:** 120 mins
Room: Frankfurt | **Capacity:** 30 | **No. of Occurrences:** 3

L30 | OEMs & Machine Builders

Elevate your Application with FactoryTalk Optix Examples

This advanced session explores examples that were used to elevate customer applications. It's focused on FactoryTalk® Optix Studio™ functionality; e.g. custom menu, communication options, external database support and customized solutions. Basic FactoryTalk® Optix Studio™ knowledge is assumed.

Sub Track: Operations Management Software | **Type:** Hands-On Lab
Session Level: Advanced Training | **Duration:** 120 mins
Room: Estrasburgo | **Capacity:** 40 | **No. of Occurrences:** 3

L34 | OEMs & Machine Builders

What's New in FactoryTalk View Site Edition Software

This lab on FactoryTalk® View Site Edition covers our latest release's new and enhanced features. Topics include our new DatalogPro integrated with InfluxDB, new runtime navigation menu options, new graphic controls, mobility enhancements and more.

Sub Track: Design Software | **Type:** Hands-On Lab
Session Level: Advanced Training | **Duration:** 120 mins
Room: Duesseldorf | **Capacity:** 30 | **No. of Occurrences:** 3

L35 | OEMs & Machine Builders

Advance Your HMI Vision: FactoryTalk Optix Visualization Platform

Learn how to leverage the advanced features within the FactoryTalk® Optix™ platform. Study the more advanced functionality of FactoryTalk® Optix Studio™, allowing you to rapidly develop and deploy visualization projects using object-oriented principles, templates and IIoT protocols.

Sub Track: Operations Management Software | **Type:** Hands-On Lab
Session Level: Advanced Training | **Duration:** 120 mins
Room: Estrasburgo | **Capacity:** 40 | **No. of Occurrences:** 3

L36 | OEMs & Machine Builders

Stratix Switches: Fundamentals

Learn to integrate Stratix® switches into your plant network to improve reliability and manageability. Become familiar with Stratix® switches, management and diagnostic tools, including WebUI, Studio 5000® Add-on Profiles (AOP) and FactoryTalk® faceplates. Learn how to configure and monitor a Device Level Ring (DLR) for network resiliency.

Sub Track: Networks & Infrastructure | **Type:** Hands-On Lab
Session Level: Advanced Training | **Duration:** 120 mins
Room: Lyon | **Capacity:** 20 | **No. of Occurrences:** 7

L37 | OEMs & Machine Builders

Stratix Switches: Advanced

As network designs adapt to meet evolving needs, advanced Stratix® switch features can help optimize performance. This hands-on lab covers Network Address Translation (NAT), network segmentation, connected routing, switch resiliency and security. Learn how to use advanced management and troubleshooting tools in Stratix® switches to resolve network issues, and be introduced to the command-line interface (CLI). Attendees should have basic familiarity with Stratix managed switches.

Sub Track: Networks & Infrastructure | **Type:** Hands-On Lab
Session Level: Advanced Training | **Duration:** 120 mins
Room: Lyon | **Capacity:** 20 | **No. of Occurrences:** 6

L41 | OEMs & Machine Builders

Embedded Edge Compute Optimized for FactoryTalk Optix and Docker

Experience the latest addition to our compute module portfolio. This ASEM™ enabled device now hosts a Docker Engine in addition to FactoryTalk® Optix™ and FactoryTalk® Remote Access™ solution. This lab will give you hands-on experience with common Embedded Edge Compute Module workflows using FactoryTalk® Optix™ and containerized app solutions.

Sub Track: Data Operations & Analytics | **Type:** Hands-On Lab
Session Level: Advanced Training | **Duration:** 120 mins
Room: Paris | **Capacity:** 40 | **No. of Occurrences:** 3

L42 | OEMs & Machine Builders

Automate Your Engineering to Increase Productivity with APIs

Discover how automation workflows through APIs translate to more productivity for engineers. This newly-extended, two-part lab will explore leveraging APIs for device management and offer a chance to sling C# code that adopts modern development practices. Gain direct experience in automated testing of Logix code to improve quality and efficiency. Learn to remove repetitive, manual tasks in Studio 5000 Logix Designer® application, ControlFLASH Plus® and FactoryTalk® Logix Echo, saving engineering time.

Sub Track: Design Software | **Type:** Hands-On Lab
Session Level: Advanced Training | **Duration:** 120 mins
Room: Paris | **Capacity:** 40 | **No. of Occurrences:** 3

L43 | OEMs & Machine Builders

Create and Deploy a Robot Library Solution

In this introductory hands-on lab, you'll discover how unified robot control streamlines the design and development of robot projects. Utilize catalog-number-driven workflows, dedicated application code libraries, and virtual commissioning workflows to simplify the design and programming process, ultimately reducing time to market.

Sub Track: Design Software | **Type:** Hands-On Lab
Session Level: Advanced Training | **Duration:** 120 mins
Room: Oxford | **Capacity:** 20 | **No. of Occurrences:** 3

L44 | OEMs & Machine Builders

The Robot Programming Experience

With unified robot control, we are simplifying the path to more robot value by using a single control platform that empowers teams to own and support each system holistically. Our integrated robots strategy offers the flexibility to choose the connected architecture that improves coordination between robots and surrounding automation. In this three-hour advanced hands-on lab, you'll leverage the unified robot control library to teach a robot path and explore robot-specific programming topics such as frame definition and vision-guided product tracking.

Sub Track: Design Software | **Type:** Hands-On Lab
Session Level: Advanced Training | **Duration:** 120 mins
Room: Oxford | **Capacity:** 20 | **No. of Occurrences:** 3

L80 | OEMs & Machine Builders

FactoryTalk® Security: Basic Hands-on Lab

This lab addresses the FactoryTalk® Directory components and functions, and offers some 'best practice' steps in securing your system. You will explore practical ways to protect the intellectual property contained in your ControlLogix™ programmable automation controller (PAC), manage access to your control system hardware and software, and improve tamper resistance. This includes the application of FactoryTalk® Security.

Sub Track: Cybersecurity | **Type:** Hands-On Lab
Session Level: Advanced Training | **Duration:** 120 mins
Room: Colonia | **Capacity:** 30 | **No. of Occurrences:** 2

L82 | OEMs & Machine Builders

FactoryTalk Security: Advanced Hands-on Lab

This lab introduces the FactoryTalk® Directory components and functions, and offers some 'best practice' steps in securing your system. You will learn practical ways to protect the intellectual property contained in your ControlLogix™ programmable automation controller (PAC), manage access to your control system hardware and software, and improve tamper resistance. This includes the application of FactoryTalk Security.

Sub Track: Cybersecurity | **Type:** Hands-On Lab
Session Level: Advanced Training | **Duration:** 120 mins
Room: Duesseldorf | **Capacity:** 30 | **No. of Occurrences:** 2

IE04 | OEMs & Machine Builders

What's New and What's Next in Logix: Unlocking the ControlLogix 5590 Controller System Experience

Discover the new ControlLogix® 5590 controller and the latest innovations in the Logix portfolio. Explore how the latest Logix hardware and software work together to unify your operations, enhance productivity and simplify complex applications. Designed with safety, security and scalability in mind, these solutions help you meet today's demands while preparing for tomorrow's challenges.

Sub Track: Industrial Control | **Type:** Presentation
Session Level: General | **Duration:** 60 mins
Room: Pedraza | **Capacity:** 30 | **No. of Occurrences:** 2

IE06 | OEMs & Machine Builders

What's New and What's Next in Visualization Software and Hardware Portfolio

Discover the newly released products and features in our visualization software and hardware portfolio, and preview what's planned for the upcoming year. This session showcases how new capabilities enable scalable solutions, efficient application design, access to real-time information, and improve operator effectiveness.

Sub Track: Scalable Control & Visualization | **Type:** Presentation
Session Level: General | **Duration:** 60 mins
Room: Tudela | **Capacity:** 30 | **No. of Occurrences:** 2

IE07 | OEMs & Machine Builders

What's New and What's Next with FactoryTalk Remote Access Solution: Overview, Architectures and Options

The FactoryTalk® Remote Access™ solution provides secure remote connectivity to industrial automation devices from anywhere in the world. In this session we'll explore what's new, and demonstrate options that enable you to seamlessly connect, troubleshoot and support your industrial automation from anywhere.

Sub Track: Scalable Control & Visualization | **Type:** Presentation
Session Level: General | **Duration:** 60 mins
Room: Tudela | **Capacity:** 30 | **No. of Occurrences:** 2

IE16 | OEMs & Machine Builders

Introduction to the FactoryTalk Optix Portfolio

Learn how to optimize your visualization applications with an open, scalable, extensible platform. This session will provide an introduction to the FactoryTalk® Optix™ portfolio, along with highlights of its latest features. We'll also highlight the benefits that cloud connectivity and FactoryTalk® Hub™ bring to this flexible visualization platform.

Sub Track: Scalable Control & Visualization | **Type:** Presentation
Session Level: General | **Duration:** 60 mins
Room: Tudela | **Capacity:** 30 | **No. of Occurrences:** 2

IE29 | OEMs & Machine Builders

Micro Control: Integrated Automation Solution

Scale your control and simplify your program workflows with ease. Discover how the new FactoryTalk® Design Workbench™ software and Micro800® controller enhancements can help you reduce engineering effort and speed time to market with lower system cost. Learn how the software, developed with a consistent user interface and unified experience as Logix software, allows for easier development and troubleshooting. Gain design efficiency and operational productivity for your micro control system.

Sub Track: Industrial Control | **Type:** Presentation
Session Level: General | **Duration:** 60 mins
Room: Pedraza | **Capacity:** 30 | **No. of Occurrences:** 1

IE65 | OEMs & Machine Builders

Driving Value for Machine Builders and their End User Customers with a Digital Twin Strategy

The digital twin establishes a track record of real ROI and differentiation for machine builders and their customers. Virtual representations of physical assets, processes, and systems enable machine builders to drive operational efficiency, innovate faster and enhance their relationships with customers, while also offering benefits to the customer. This session will cover leading practices for digital twin, supported by real-world examples from machine builders and their end user customers.

Sub Track: Digital Transformation Strategy | **Type:** Presentation
Session Level: General | **Duration:** 60 mins
Room: Pedraza | **Capacity:** 30 | **No. of Occurrences:** 2

IE97 | OEMs & Machine Builders

PowerFlex Variable Frequency Drives Overview

Learn about the capabilities and advanced features of today's PowerFlex® drive portfolio.

Sub Track: Smart Motor Control | **Type:** Presentation
Session Level: General | **Duration:** 60 mins
Room: Pedraza | **Capacity:** 30 | **No. of Occurrences:** 2

PT27 | OEMs & Machine Builders

Wireless Condition Monitoring: New Products to Maximize Uptime

Machine failures cause costly unexpected downtime annually. To minimize downtime, end users and machine builders increasingly use condition monitoring for preventative maintenance. While cost-effective, scalable wireless sensor solutions are popular, their finite battery life presents a challenge. Learn how the 1445 wireless and battery-less system offers a zero-maintenance preventative maintenance solution to monitor your asset health constantly and reliably.

Sub Track: Industrial Control | **Type:** Presentation
Session Level: General | **Duration:** 60 mins
Room: Pedraza | **Capacity:** 30 | **No. of Occurrences:** 2

PT62 | OEMs & Machine Builders

OEMs: Are you Ready for the New Machinery Regulation (EU)2023/1230?

The new Machinery Regulation(EU) 2023/1230 comes into force on 20th January 2027, placing new requirements on OEMs selling equipment into the EU. Join this session for an overview of the Regulation, and key harmonised standards which provide a presumption of conformity.

Sub Track: Safety Solutions | **Type:** Presentation
Session Level: General | **Duration:** 60 mins
Room: Pedraza | **Capacity:** 30 | **No. of Occurrences:** 2

PT63 | OEMs & Machine Builders

Safety, Sensing and Industrial Control Linking Technology to Support SMART Solution

Moving to linking technologies for safety, sensing, and industrial components, reduces costs for the system whilst providing real-time data for improving equipment efficiency. Join this session for an overview of the solutions currently available, and the benefits that are delivered.

Sub Track: Industrial Control | **Type:** Presentation
Session Level: General | **Duration:** 60 mins
Room: Pedraza | **Capacity:** 30 | **No. of Occurrences:** 2

PT67 | OEMs & Machine Builders

Embracing the Autonomous OEM: Building the Future Together

OEMs no longer have the needed bench strength to cover current and future market needs, and they are turning to partners for support. While OEMs are experts at designing, building and delivering machines and equipment, success will be determined by how well you prepare for what the future holds. What will the impact of cybersecurity and regulatory compliance be in all the regions you serve, AI developments and data science practices? In this session, we'll explore ways to prepare.

Sub Track: Digital Transformation Strategy | **Type:** Presentation
Session Level: General | **Duration:** 60 mins
Room: Pedraza | **Capacity:** 30 | **No. of Occurrences:** 2

PT69 | OEMs & Machine Builders

Transforming Machine Design with the Next-Generation Control System

Discover how the new CompactLogix™ 5390 Controller, paired with PointMax™ 5034 I/O, is redefining machine design. This modern control system delivers higher performance for complex applications, while ensuring compliance with the upcoming European Machine Directive, Cyber Resiliency Act and Machine Safety Standards. Learn how this solution:

- Simplifies architectures to reduce design, development, and deployment costs
- Minimizes system footprint, enabling innovative applications like AGVs and AMRs
- Accelerates migration and deployment, helping you cut time-to-market significantly

Join us to explore practical strategies for adopting this new architecture and unlocking new possibilities for high-performance machines.

Sub Track: Scalable Control & Visualization | **Type:** Presentation
Session Level: General | **Duration:** 60 mins
Room: Manchester | **Capacity:** 40 | **No. of Occurrences:** 2

D01 | OEMs & Machine Builders

Mastering Servo Axis Tuning for Optimized Machine Performance

Servo axis tuning is a critical step in your machine commissioning journey. With Integrated Motion over EtherNet/IP™ for Kinetix® and PowerFlex® drives, you'll discover how intuitive and efficient the process can be. This session will equip you with practical techniques to significantly reduce tuning time while boosting machine performance and reliability. We'll also dive into frequency resonances and oscillations, with proven strategies to mitigate them effectively.

Sub Track: Smart Motor Control | **Type:** Demonstration
Session Level: Advanced Training | **Duration:** 60 mins
Room: Burdeos | **Capacity:** 70 | **No. of Occurrences:** 3

D02 | OEMs & Machine Builders

The PowerFlex Drives Experience: Practical Insights from Selection to Maintenance

The session addresses the lifecycle of a PowerFlex® AC Drive, from selection and installation, to power and control wiring, start-up, tuning, maintenance and repair. The presenters will introduce essential tools, share best practices, and highlight advanced product features, using typical user scenarios and live demonstrations.

Sub Track: Smart Motor Control | **Type:** Demonstration
Session Level: Advanced Training | **Duration:** 60 mins
Room: Burdeos | **Capacity:** 70 | **No. of Occurrences:** 3

D03 | OEMs & Machine Builders

Kinetix Motion Control Meets Simplified Analytics: Boost Machine Efficiency and Equipment Health

In today's fast-moving industrial landscape, using machine-level data is essential. Not just for keeping operations efficient, but also for protecting your equipment and planning ahead. This technical demonstration will show how simplified analytics at machine level can help you monitor asset health, detect anomalies early, and make smarter, data-driven decisions. Whether you're aiming for predictive maintenance or process optimization, this session will give you practical tools to improve equipment longevity and overall performance using Kinetix® Motion control ecosystem.

Sub Track: Smart Motor Control | **Type:** Demonstration
Session Level: Advanced Training | **Duration:** 60 mins
Room: Burdeos | **Capacity:** 70 | **No. of Occurrences:** 3

D05 | OEMs & Machine Builders

Lifetime of a Digital Twin

A digital twin is more than just a virtual representation of your physical asset. It is a tool that can be used throughout the lifetime of a machine or system, helping you make better decisions, provide better training, and protect your investment through improved maintenance and evolution of your asset. Join us in this demo to learn how.

Sub Track: Digital Transformation Strategy | **Type:** Demonstration
Session Level: Advanced Training | **Duration:** 60 mins
Room: Burdeos | **Capacity:** 70 | **No. of Occurrences:** 3

D06 | OEMs & Machine Builders

How to Secure your Machine to Protect your Safety Functions Against Corruption

The new Machinery Regulation (EU) 2023/1230 introduces requirements for protecting safety functions against corruption. This session explores practical use cases, strategies, and products that support secure machine operation and help implement the safety-related security levels defined in the standard 'WDEN50742 - Safety of Machinery - Protection against corruption'.

Sub Track: Cybersecurity | **Type:** Demonstration
Session Level: Advanced Training | **Duration:** 120 mins
Room: Burdeos | **Capacity:** 70 | **No. of Occurrences:** 3

D07 | OEMs & Machine Builders

System Software Architecture Design

In this session, you will learn about the major considerations that impact software architecture design decisions for a wide range of FactoryTalk® and other Rockwell Automation® software solutions including scalability and sizing guidelines, recommended architectures and general best practices.

Sub Track: Networks & Infrastructure | **Type:** Demonstration
Session Level: Advanced Training | **Duration:** 90 mins
Room: Toulouse | **Capacity:** 70 | **No. of Occurrences:** 2

D08 | OEMs & Machine Builders

Benefits of Time Synchronization (CIP Sync) in Modern EtherNet/IP™ Network Architectures

During this demonstration we will show you the importance of time synchronization required for I/O timestamping and motion applications. You will learn to recognize specific challenges and how to overcome them. This demonstration will provide you with the knowledge to build robust installations/machines, and the ability to integrate them into a Converged Plantwide Ethernet Architecture.

Sub Track: Networks & Infrastructure | **Type:** Demonstration
Session Level: Advanced Training | **Duration:** 60 mins
Room: Toulouse | **Capacity:** 70 | **No. of Occurrences:** 2

D09 | OEMs & Machine Builders

FactoryTalk Design Studio Demonstration Session

Want to design and deliver automation projects faster? Interested in collaborative workflows and integrated version control systems? Then come and learn how to modernize your development efforts by using FactoryTalk® Design Studio™, the latest addition to our design portfolio.

Sub Track: Design Software | **Type:** Demonstration
Session Level: Advanced Training | **Duration:** 60 mins
Room: Toulouse | **Capacity:** 70 | **No. of Occurrences:** 3

D10 | OEMs & Machine Builders

FactoryTalk Optix Demo

Stop by to discover the powerful features of FactoryTalk® Optix™, our latest, open, scalable addition to the visualization portfolio. Learn how to improve the delivery of your visualization through an open, extensible platform coupled with cloud-enabled editing, version management and multi-user collaboration - all with flexible licensing.

Sub Track: Design Software | **Type:** Demonstration
Session Level: Advanced Training | **Duration:** 90 mins
Room: Toulouse | **Capacity:** 70 | **No. of Occurrences:** 2

D11 | OEMs & Machine Builders

How to Improve Plant Operations through Better HMI Graphics

Come and learn how to apply ISA101 principles to develop an effective HMI. We'll cover topics such as task analysis, cognitive workload and improving situation awareness - all of which assist the operator in keeping the plant running and helping them to resolve abnormal situations when they occur.

Sub Track: Operations Management Software | **Type:** Demonstration
Session Level: Advanced Training | **Duration:** 60 mins
Room: Toulouse | **Capacity:** 70 | **No. of Occurrences:** 2

D13 | OEMs & Machine Builders

Remote Access for Industrial Automation Control Systems (IACS)

Want to learn how to access your industrial machines from anywhere? Join our live demo and see how it's done! We'll show you how to establish a remote connection using the Stratix® 4300 Remote Access™ Router or Remote Access Runtime for Windows and Linux OS. You'll also get a firsthand look at the FactoryTalk® Remote Access™ service, available through FactoryTalk® Design Hub™.

Sub Track: Networks & Infrastructure | **Type:** Demonstration
Session Level: Advanced Training | **Duration:** 60 mins
Room: Burdeos | **Capacity:** 70 | **No. of Occurrences:** 2

D14 | OEMs & Machine Builders

Securing a Logix Controller

Concerned about the security of Logix controller? Intellectual property protection, access control, tamper protection? Studio 5000 Logix Designer® provides access control for your source code as well as control over the deployment of that code. Come and learn how License Based Protection and FactoryTalk® Security can protect your investment.

Sub Track: Cybersecurity | **Type:** Demonstration
Session Level: Advanced Training | **Duration:** 60 mins
Room: Toulouse | **Capacity:** 70 | **No. of Occurrences:** 2

D15 | OEMs & Machine Builders

FactoryTalk Optix Tips, Tricks & Application Insights

Join us for a practical and insightful session on FactoryTalk® Optix™, where we'll share real-world tips and tricks to help you build better applications faster. Learn about key conceptual differences from FactoryTalk® View Machine Edition, showing common pitfalls and optimisation strategies. Whether you're just starting or already building with FactoryTalk Optix, this session will equip you with actionable techniques to improve performance, usability, and maintainability.

Sub Track: Design Software | **Type:** Demonstration
Session Level: Advanced Training | **Duration:** 120 mins
Room: Toulouse | **Capacity:** 70 | **No. of Occurrences:** 2

PROCESS SOLUTIONS

IL10 | Process Solutions

Introduction to PlantPax 5.40 Operations for End Users

From an operator's point of view, explore PlantPax® HMI faceplates, control strategies and operating process simulations. Learn the steps and components necessary to start development of a PlantPax project using the Rockwell Automation® Library of Process Objects.

Sub Track: Process Solutions | **Type:** Hands-On Lab
Session Level: Advanced Training | **Duration:** 120 mins
Room: Munich | **Capacity:** 24 | **No. of Occurrences:** 2

L03 | Process Solutions

Logix SIS: Implementing Safety Functions

Learn how to create, configure and run an SIS system that leverages our safety controllers and Studio 5000® environment. This hands-on lab will expose you to the world of Logix SIS, a safety solution built on the familiar Logix platform. Through practical exercises, you'll gain experience building and simulating safety logic programs, achieving a strong foundation for safeguarding your processes.

Sub Track: Safety Solutions | **Type:** Hands-On Lab
Session Level: Advanced Training | **Duration:** 120 mins
Room: Bristol | **Capacity:** 12 | **No. of Occurrences:** 4

L14 | Process Solutions

FLEXHA 5000 I/O Hands-on Lab

Process DCS users now expect their I/O to be fault-tolerant and provide the ability to make changes late in the design and implementation stage. Join us for this hands-on lab to learn about our FLEXHA 5000™ I/O that meets these requirements and differentiates from the competition in how I/O types are configured, and how they provide a more consistent landing experience for commissioning a PlantPax® system.

Sub Track: Industrial Control | **Type:** Hands-On Lab
Session Level: Advanced Training | **Duration:** 120 mins
Room: Munich | **Capacity:** 12 | **No. of Occurrences:** 3

L21 | Process Solutions

FactoryTalk Batch Hands-on Lab

Gain an introduction to the FactoryTalk® Batch portfolio through hands-on learning. This lab will cover the basics of batch control with FactoryTalk® and explore the software packages that comprise a complete solution for your applications.

Sub Track: Process Solutions | **Type:** Hands-On Lab
Session Level: Advanced Training | **Duration:** 120 mins
Room: Munich | **Capacity:** 24 | **No. of Occurrences:** 2

L39 | Process Solutions

PlantPax 5.40: Bulk Engineering for System Deployers

Learn how to use the powerful features in the Application Code Manager (ACM) software to create PlantPax® applications where content can be easily reused and duplicated. In this lab, you will use ACM to develop a project for a single mix tank by leveraging the control strategies and HMI graphics provided by the Rockwell Automation® Library of Process Objects. Afterwards, you will see how the application can be modified with bulk content to support a project with multiple mix tanks.

Sub Track: Process Solutions | **Type:** Hands-On Lab
Session Level: Advanced Training | **Duration:** 120 mins
Room: Munich | **Capacity:** 24 | **No. of Occurrences:** 3

L40 | Process Solutions

Leveraging Engineering Workflows that Streamline PlantPax System Development

Engineers will learn to develop PlantPax® projects using process library control strategies, configuring controllers and HMIs with global objects, tag-based alarms and smart device integration. Discover time-saving modernization tools for seamless migration. Engage with advanced features and subject matter specialists in this hands-on session, designed to build essential skills for process automation professionals.

Sub Track: Process Solutions | **Type:** Hands-On Lab
Session Level: Advanced Training | **Duration:** 120 mins
Room: Munich | **Capacity:** 24 | **No. of Occurrences:** 3

IE24 | Process Solutions

Smarter Deployments, Simpler Maintenance: Streamlining PlantPax with the New Provisioning and Management Platform

Discover how the provisioning and management platform automates PlantPax® deployment and lifecycle tasks. Powered by Ansible, this tool streamlines manual processes into efficient, script-driven workflows. See live demos, explore platform capabilities, and learn how automation reduces risk, saves time and improves consistency across industrial systems. Deploy smarter and scale with confidence.

Sub Track: Process Solutions | **Type:** Presentation
Session Level: General | **Duration:** 60 mins
Room: Mora | **Capacity:** 30 | **No. of Occurrences:** 2

PT10 | Process Solutions

Solution to Burner Management Applications

Several OEM customers produce burner systems as their primary product or as part of the equipment they build. These OEMs have looked to Rockwell Automation to provide an alternative to the third-party products used to manage the safety portion of burner control, or Burner Management System (BMS). Our OEM customers would like the same platform used for overall equipment control to be used for BMS without the need for third-party control hardware. A set of Safety Add-On Instructions targeting BMS applications has been created for this reason. This Add-On Instruction set is flexible enough to meet the needs of most OEM burner applications, and is easy to implement. To best serve our OEM customers, the BMS library provided carries suitable certification, such that the OEM's effort to achieve necessary certification for their final systems is reduced.

Sub Track: Process Solutions | **Type:** Presentation
Session Level: General | **Duration:** 60 mins
Room: Mora | **Capacity:** 30 | **No. of Occurrences:** 1

PT53 | Process Solutions

Driving Process Excellence with PlantPax

Discover how PlantPax® delivers lifecycle value through integrated, characterized, supported, and migratable design. Learn PlantPax® scalable sequencing options for batch and continuous processes to scale from simple to complex processes while preserving flexibility for change. We'll also cover the latest and upcoming enhancements across the FactoryTalk® Batch portfolio—focused on predictable, repeatable batch and high availability.

Sub Track: Industrial Control | **Type:** Presentation
Session Level: General | **Duration:** 60 mins
Room: Mora | **Capacity:** 30 | **No. of Occurrences:** 2

PT54 | Process Solutions

The Value of Using Rockwell Automation Library of Process Objects

The Rockwell Automation Library of Process Objects helps you quickly develop process solutions with rich functionality and known performance. In this session, we'll present the library objects and their functions within a typical control system. We'll highlight features for operations, maintenance and engineering personnel. We'll demonstrate control strategies built using library objects. Walk away understanding the value of using the library and included productivity tools to develop process solutions.

Sub Track: Process Solutions | **Type:** Presentation
Session Level: General | **Duration:** 60 mins
Room: Mora | **Capacity:** 30 | **No. of Occurrences:** 2

UNIVERSAL TRACKS

IL02 | Universal Track

Introduction to Distributed HMI with FactoryTalk View Site Edition Software

New to FactoryTalk® View Site Edition? Need a refresher on the basics? In this lab, you'll learn about the basic capabilities and features of FactoryTalk® View Site Edition. Topics include creating an application, working with displays, working with tags, testing and running the application, applying graphic animations and creating trends.

Sub Track: Design Software | **Type:** Hands-On Lab
Session Level: Advanced Training | **Duration:** 120 mins
Room: Colonia | **Capacity:** 30 | **No. of Occurrences:** 3

IL08 | Universal Track

Introduction to FactoryTalk AssetCentre Software

Discover the basic functionality of FactoryTalk® AssetCentre in a hands-on lab environment. You will use the newly redesigned thin client, configure new assets and security, and gather lifecycle data for a network inventory.

Sub Track: Asset Management | **Type:** Hands-On Lab
Session Level: Advanced Training | **Duration:** 120 mins
Room: Colonia | **Capacity:** 30 | **No. of Occurrences:** 2

IL09 | Universal Track

Introduction to ThinManager

This lab is a guided tour of ThinManager® to show you how to solve some of the most common manufacturing challenges. You will explore how ThinManager reduces total cost of ownership, enables a productive workforce, reduces unexpected downtime and helps secure the plant floor. This partially pre-configured lab allows for maximum exposure to the wide variety of functionality ThinManager offers to maximize your operation's productivity and security.

Sub Track: Operations Management Software | **Type:** Hands-On Lab
Session Level: Advanced Training | **Duration:** 120 mins
Room: Londres | **Capacity:** 25 | **No. of Occurrences:** 4

L20 | Universal Track

Using FactoryTalk Linx Gateway to Securely Access and Manage a Control System

Discover how FactoryTalk® Linx Gateway securely and efficiently accesses control data, in this modular lab. Choose which interfaces you would like to explore, whether it's OPC-DA, OPC UA, DDE, Excel RTD or MQTT. Learn how the software's versatility efficiently handles large-scale data movement throughout the plant floor or prepares it for cloud applications. Explore how to use custom Excel workbooks to perform data upload/download, histogram logging and more.

Sub Track: Industrial Control | **Type:** Hands-On Lab
Session Level: Advanced Training | **Duration:** 120 mins
Room: Paris | **Capacity:** 40 | **No. of Occurrences:** 3

L38 | Universal Track

ThinManager: Take a Deep Dive from the Visualization Edge

In this hands-on lab, you will learn the building blocks of ThinManager®, including deploying centralized Windows applications and Docker-based technology containers to ThinManager-managed edge devices. You will become a specialist at configuring the four ways to deliver content — by device, user, location and event — and you will gain valuable exposure to more advanced topics like firewall configuration, geo-fencing, ThinManager REST-API and the new BootAssist client storage feature.

Sub Track: Operations Management Software | **Type:** Hands-On Lab
Session Level: Advanced Training | **Duration:** 240 mins
Room: Londres | **Capacity:** 25 | **No. of Occurrences:** 3

L81 | Universal Track

FactoryTalk AssetCentre: Advanced

This hands-on experience will show you how to keep your facility up to date using the Asset Inventory Agent and lifecycle management, configure and use the Management of Change (MoC) functionality and manage database growth in your FactoryTalk® AssetCentre system.

Sub Track: Asset Management | **Type:** Hands-On Lab
Session Level: Advanced Training | **Duration:** 120 mins
Room: Duesseldorf | **Capacity:** 30 | **No. of Occurrences:** 2

L83 | Universal Track

From Data to Decisions: Hands-on with FactoryTalk Energy Manager

Drive sustainability without complexity. This session walks you step-by-step through extracting data, building energy models and assigning meters to assets. Learn how to turn raw utility data into actionable KPIs to accelerate ESG goals and achieve operational excellence. No advanced engineering required – this is a solution designed for fast industrial adoption.

Sub Track: Data Operations & Analytics | **Type:** Hands-On Lab
Session Level: Advanced Training | **Duration:** 120 mins
Room: Ocaña | **Capacity:** 20 | **No. of Occurrences:** 4

IE05 | Universal Track

What's New and What's Next in the FactoryTalk View Software Portfolio: Refresh Your Insight

Explore the latest enhancements and features of the FactoryTalk® View software portfolio in this informative session. We will discuss the new capabilities introduced in the most recent release, showcasing their potential to elevate operations technology. Additionally, we will cover the role of system-level tools and cross-product integration in creating more efficient and effective operational environments.

Sub Track: Scalable Control & Visualization | **Type:** Presentation
Session Level: General | **Duration:** 60 mins
Room: Tudela | **Capacity:** 30 | **No. of Occurrences:** 2

IE57 | Universal Track

Resilient Control Systems for High Availability

High availability solutions require a control system that matches them in reliability. With multiple choices available, this session will help you understand the options for controllers, I/O, servers and networks to reduce unplanned downtime and have a continuous operation.

Sub Track: Data Operations & Analytics | **Type:** Presentation
Session Level: General | **Duration:** 60 mins
Room: Trujillo | **Capacity:** 30 | **No. of Occurrences:** 2

IE63 | Universal Track

Data-Driven Decisions: Harnessing Digital Insights for Operational Excellence

Unlock the power of data-driven insights and AI to transform your decision-making process. Discover how AI-driven applications help you capture and use data effectively, enhancing efficiency and driving innovation. Learn how TechConnectIQ uses generative AI and ML.

Sub Track: Workforce Enablement | **Type:** Presentation
Session Level: General | **Duration:** 60 mins
Room: Noblejas | **Capacity:** 30 | **No. of Occurrences:** 2

IE90 | Universal Track

Maximizing Production and Profit with Pavilion8 Model Predictive Control at SABIC Gelsenkirchen

SABIC Polyolefine Gelsenkirchen, part of one of the world's largest chemical companies, implemented FactoryTalk® Analytics™ Pavilion8® Model Predictive Control, gaining real-time insights and data-driven optimization. This session will share how SABIC used predictive analytics to boost throughput, improve product quality, increase efficiency, and the lessons learned from enhancing production performance.

Sub Track: Digital Transformation Strategy | **Type:** Presentation
Session Level: General | **Duration:** 60 mins
Room: Noblejas | **Capacity:** 30 | **No. of Occurrences:** 2

PT01 | Universal Track

Enable Challenging Smart Operations with Industrial 5G

Industrial 5G is an advanced wireless solution that has the promise of enabling flexible and sustainable operations. Rockwell Automation will highlight wireless use cases, review the essentials of industrial 5G technology and highlight our research collaboration with a broad and diverse 5G ecosystem.

Sub Track: Networks & Infrastructure | **Type:** Presentation
Session Level: General | **Duration:** 60 mins
Room: Mora | **Capacity:** 30 | **No. of Occurrences:** 2

PT05 | Universal Track

Expand your Automation System Possibilities Using FactoryTalk Linx Communication Software

FactoryTalk® Linx is a set of premier communication services to enable Rockwell Automation's software portfolio. Discover how to optimize and apply the portfolio in your system, including server capacity and performance. Learn about existing and new capabilities to improve productivity, availability, security and cloud connectivity.

Sub Track: Industrial Control | **Type:** Presentation
Session Level: General | **Duration:** 60 mins
Room: Mora | **Capacity:** 30 | **No. of Occurrences:** 2

PT06 | Universal Track

The Shift from RSLinx Classic System to FactoryTalk Linx Communication Software

Migrating from RSLinx® Classic to FactoryTalk® Linx communication software just got easier. Discover the latest tips and tricks for migrating from RSLinx® Classic to FactoryTalk® Linx, including the conversion tool and device discovery. Learn about the benefits of FactoryTalk® Linx and how it improves upon RSLinx® Classic with premier data acquisition, network topology discovery, device commissioning, and communications services for Studio 5000®, Connected Components Workbench™, ControlFLASH™ Plus and other design software.

Sub Track: Industrial Control | **Type:** Presentation
Session Level: General | **Duration:** 60 mins
Room: Mora | **Capacity:** 30 | **No. of Occurrences:** 2

PT51 | Universal Track

Fundamentals of EtherNet/IP Networking in an Industrial System

Take this opportunity to review the capabilities and features of EtherNet/IP, including networking technology and terminology. Learn how to capture design requirements to successfully deploy EtherNet/IP to enable the Industrial Internet of Things (IIoT) in your Connected Enterprise®.

Sub Track: Networks & Infrastructure | **Type:** Presentation
Session Level: General | **Duration:** 60 mins
Room: Mora | **Capacity:** 30 | **No. of Occurrences:** 2

PT59 | Universal Track

Improving Safety and Efficiency in Energy/O&G with RMIS Robotic Solutions

The Robot Metaverse Integrated Solution (RMIS) enables continuous, autonomous robotic operations integrated with enterprise data systems. Designed for hazardous energy environments, RMIS uses ATEX-certified robots, edge analytics, and mission execution capabilities. This session will highlight how RMIS connects field operations with digital workflows, improves safety, increases efficiency, and accelerates data-driven decision-making.

Sub Track: Manufacturing AI | **Type:** Presentation
Session Level: General | **Duration:** 60 mins
Room: Noblejas | **Capacity:** 30 | **No. of Occurrences:** 2

PT60 | Universal Track

Beyond DataReady: Enabling new Business Models and Enhancing Customer Value with Smart Machines

Both machine builders and end users need insights into machine operations. DataReady™ transforms this process by providing contextualized data, enabling machine builders to quickly extract actionable information and manage end user machines much more cost-efficiently. This session explores even more advanced capabilities that a DataReady solution can unlock, from predictive maintenance and AI to new recurring revenue service models that will transform the machine builder’s business.

Sub Track: Manufacturing AI | **Type:** Presentation
Session Level: General | **Duration:** 60 mins
Room: Noblejas | **Capacity:** 30 | **No. of Occurrences:** 2

PT61 | Universal Track

Global Food Manufacturer Revolutionizes its Industrial Data Fabric with UnifyTwin

Explore how a global food and beverage manufacturer is transforming operations with UnifyTwin Private Cloud. By standardizing data flows, unifying AI/ML frameworks, accelerating modernization, and reducing technical debt, the company built a scalable industrial data fabric. Learn how these advancements are driving smarter manufacturing and setting a new standard for innovation and efficiency.

Sub Track: Manufacturing AI | **Type:** Presentation
Session Level: General | **Duration:** 60 mins
Room: Noblejas | **Capacity:** 30 | **No. of Occurrences:** 2

D12 | Universal Track

Learn How to Unlock the Capabilities of Stratix Managed Switch Platforms and Streamline Migration

This session will cover the latest Stratix® 5200 and Stratix® 5800 families of switches based on Cisco IOS XE software with enhanced usability, security, troubleshooting, and monitoring capabilities. You will be introduced to the new WebUI interface, which streamlines network management, simplifies daily operations and helps solve network issues faster with new troubleshooting tools. In this session we will cover topics such as Express Setup, switch configuration via WEBUI, Add-On Profiles and faceplates, Backup and Restore, as well as migration strategies.

Sub Track: Networks & Infrastructure | **Type:** Demonstration
Session Level: Advanced Training | **Duration:** 120 mins
Room: Toulouse | **Capacity:** 70 | **No. of Occurrences:** 2

For more information please visit the **ROKLive EMEA**
event webpage: [**rok.auto/roklive-emea**](http://rok.auto/roklive-emea)



expanding **human possibility**[®]

Americas: Rockwell Automation, 1201 South Second Street, Milwaukee, WI 53204-2496 USA
Tel: (1) 414.382.2000, Fax: (1) 414.382.4444
Europe/Middle East/Africa: Rockwell Automation NV, Pegasus Park, De Kleetlaan 12a, 1831 Diegem, Belgium
Tel: (32) 2 663 0600, Fax: (32) 2 663 0640
Asia Pacific: Rockwell Automation, Level 14, Core F, Cyberport 3, 100 Cyberport Road, Hong Kong
Tel: (852) 2887 4788, Fax: (852) 2508 1846

Allen-Bradley and expanding human possibility are trademarks of Rockwell Automation, Inc.
Trademarks not belonging to Rockwell Automation are property of their respective companies.

Copyright © 2026 Rockwell Automation, Inc. All Rights Reserved.

