



expanding **human possibility**[®]

Mechatronic Updates



Mark Emeott, Emulate3D Senior Emulation Engineer



PUBLIC

Agenda

1

Loads, Load
Creators, and Load
Deleters

2

Uncontrolled
Conveyors Catalog

3

New CITM Aspects

4

Override Core
Conveyor Motor

5

Controls Testing
Examples - Skid
Conveyors

6

Actuators -
Solenoid Valve,
Clamp, Cylinder

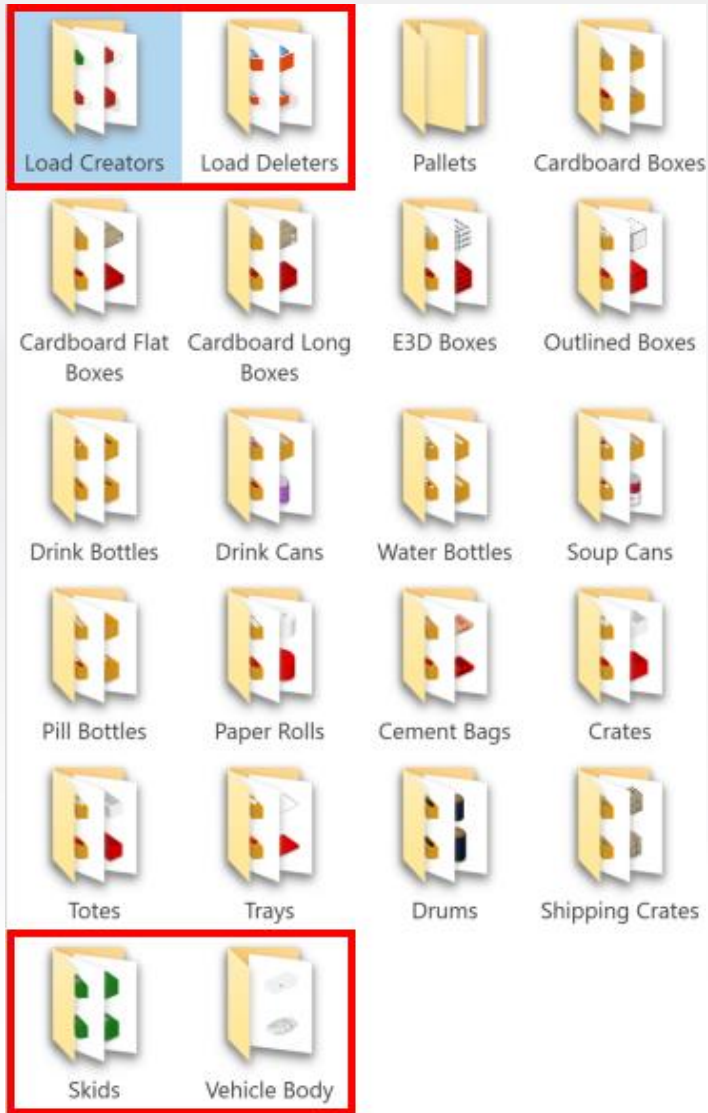
7

Wiring Diagram
Updates
& 3D Control
Panels

8

Function Controller

Loads Catalog



- New parametric loads catalog for E3D 2023
- Designed for easy customizability
- New loads, creators, & deleters added for 2024



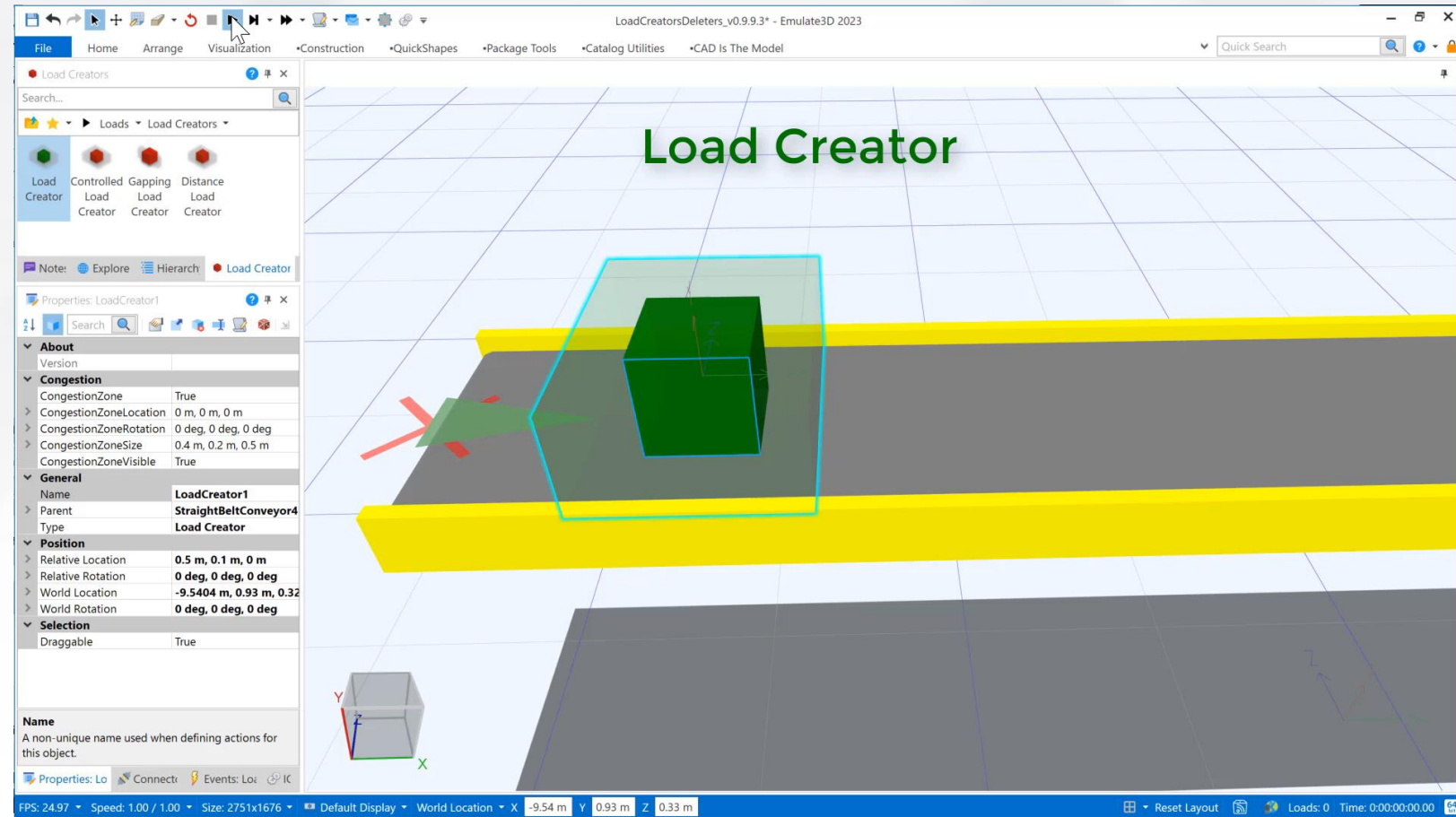
Load Creator & Load Deleter

- Load Creator

- Load creation attempted at release frequency
- Rectangular Congestion Zone is adjustable (size, location, visibility)

- Load Deleter

- Loads deleted after deletion time distribution sample (initially blocking loads option)
- Rectangular Deletion Zone is adjustable (size, location, visibility)
- Configurable Load Filters (Accepted Loads, Ignored Loads)



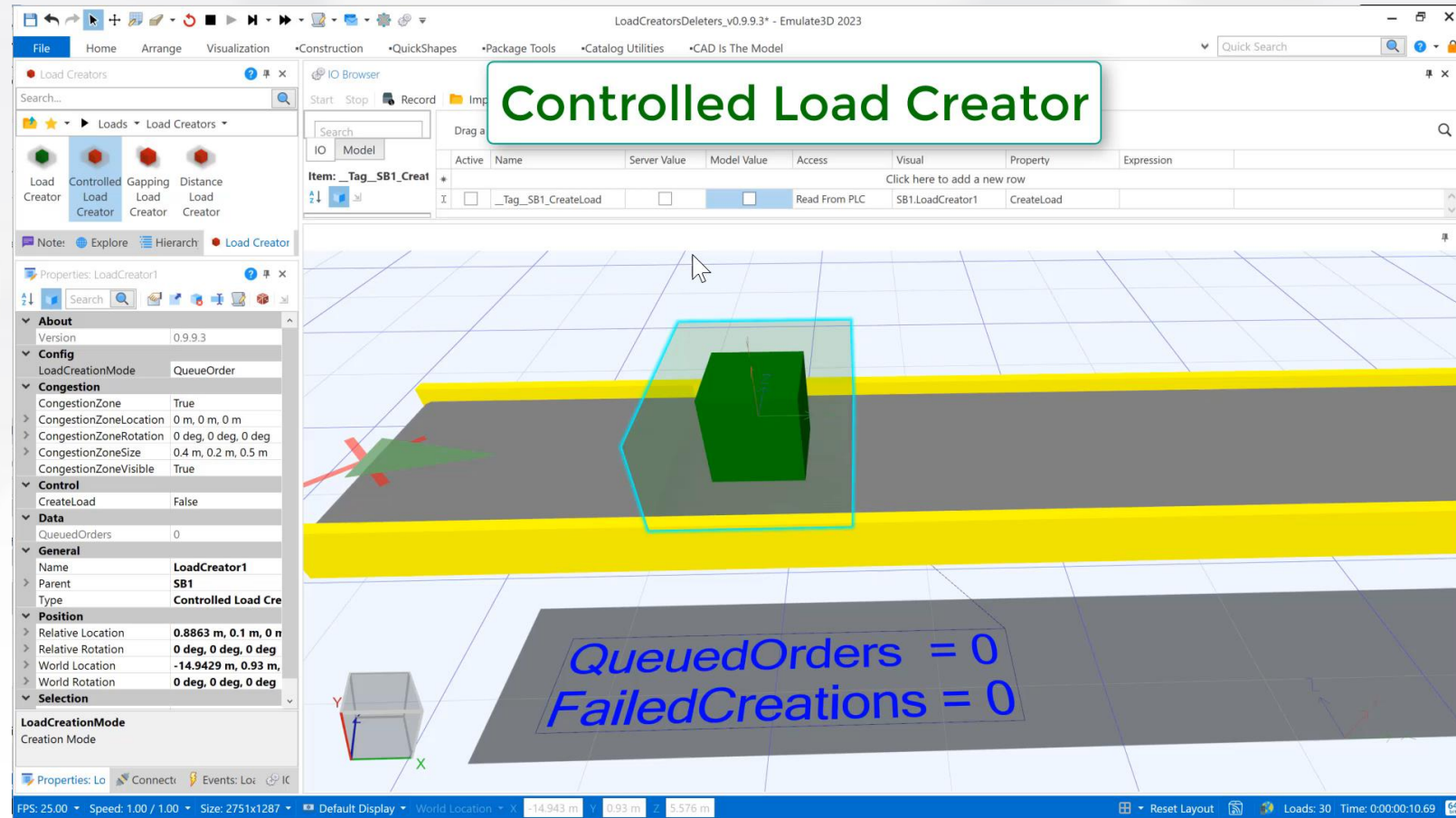
Controlled Load Creator & Controlled Load Deleter

- Controlled Load Creator

- Load creation attempted when Create Load toggles True
- Rectangular Congestion Zone is adjustable (size, location, visibility)
- Failed creations can be queued to complete when the Congestion Zone clears

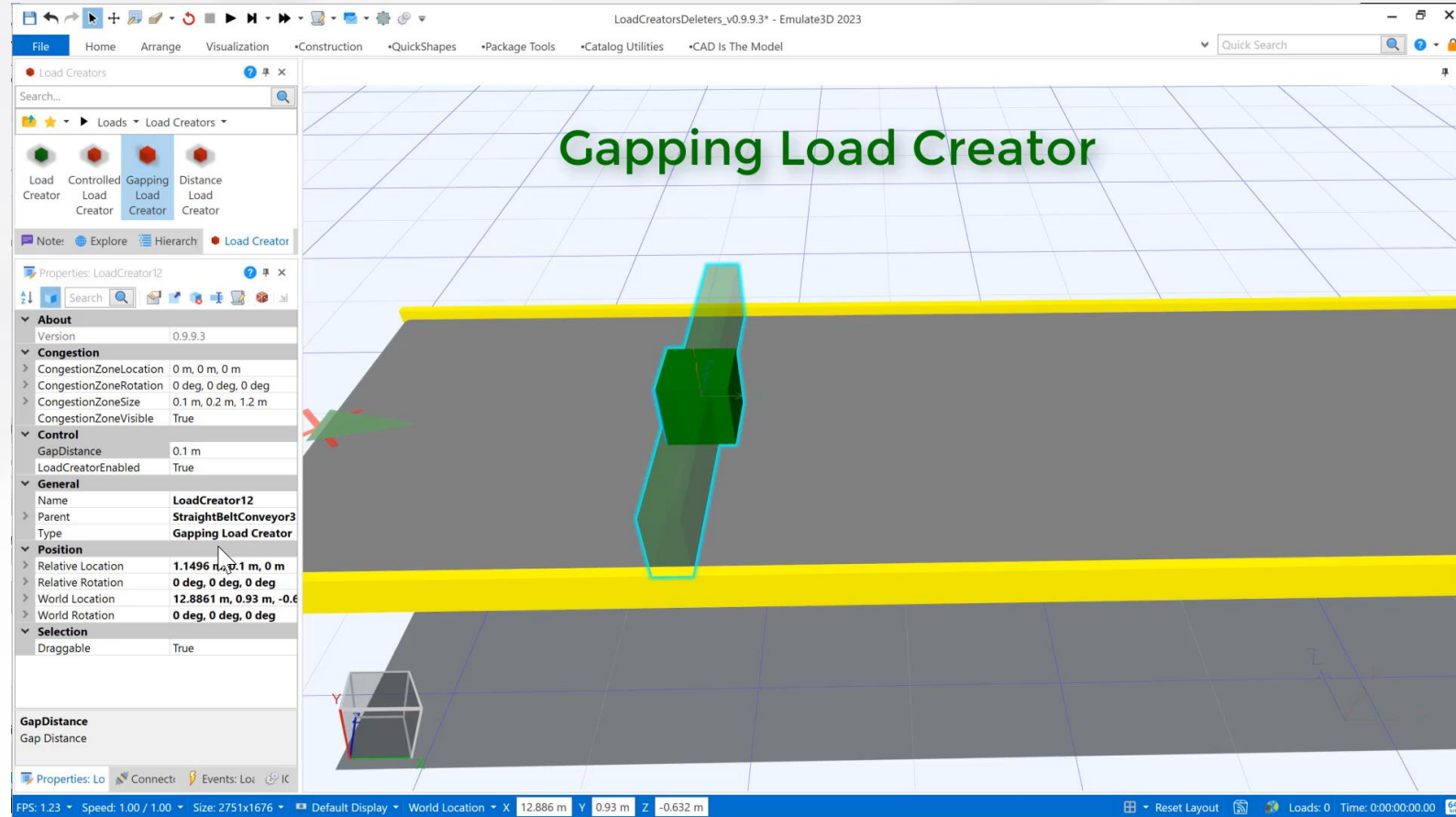
- Controlled Load Deleter

- Loads deleted when Delete Loads property toggled True
- Deletion Zone is rectangular, adjustable (size, location, visibility)
- Configurable Load Filter (Accepted Loads, Ignored Loads)



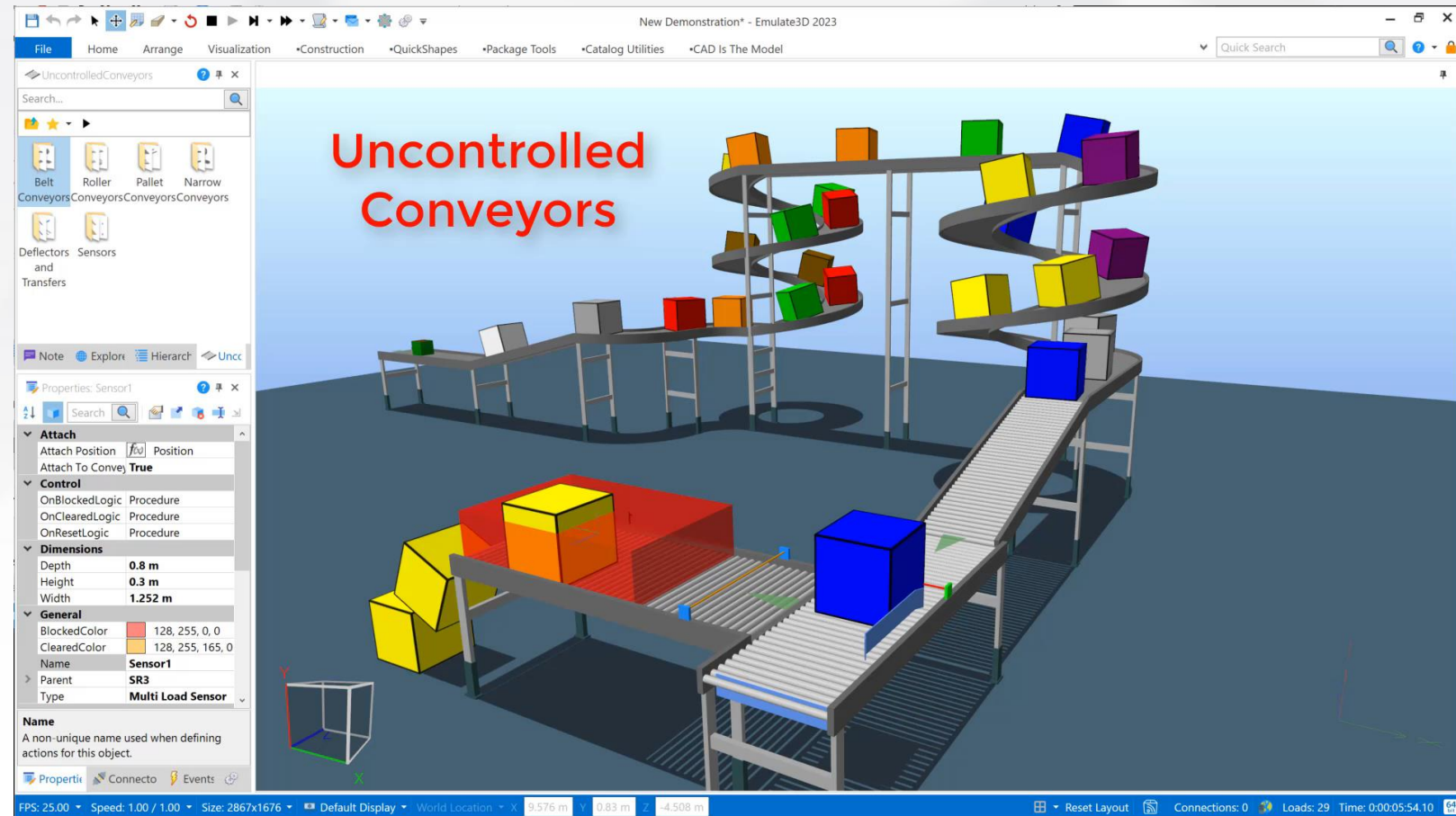
Gapping Load Creator & Distance Load Creator

- Gapping Load Creator
 - Loads created on Conveyor at specified Gap Distance (even complex loads)
 - Congestion Zone is rectangular & adjustable (size, location, visibility)
- Distance Load Creator
 - Loads creation attempted after Conveyor has travelled specified Release Distance
 - Congestion Zone is rectangular & adjustable (size, location, visibility)



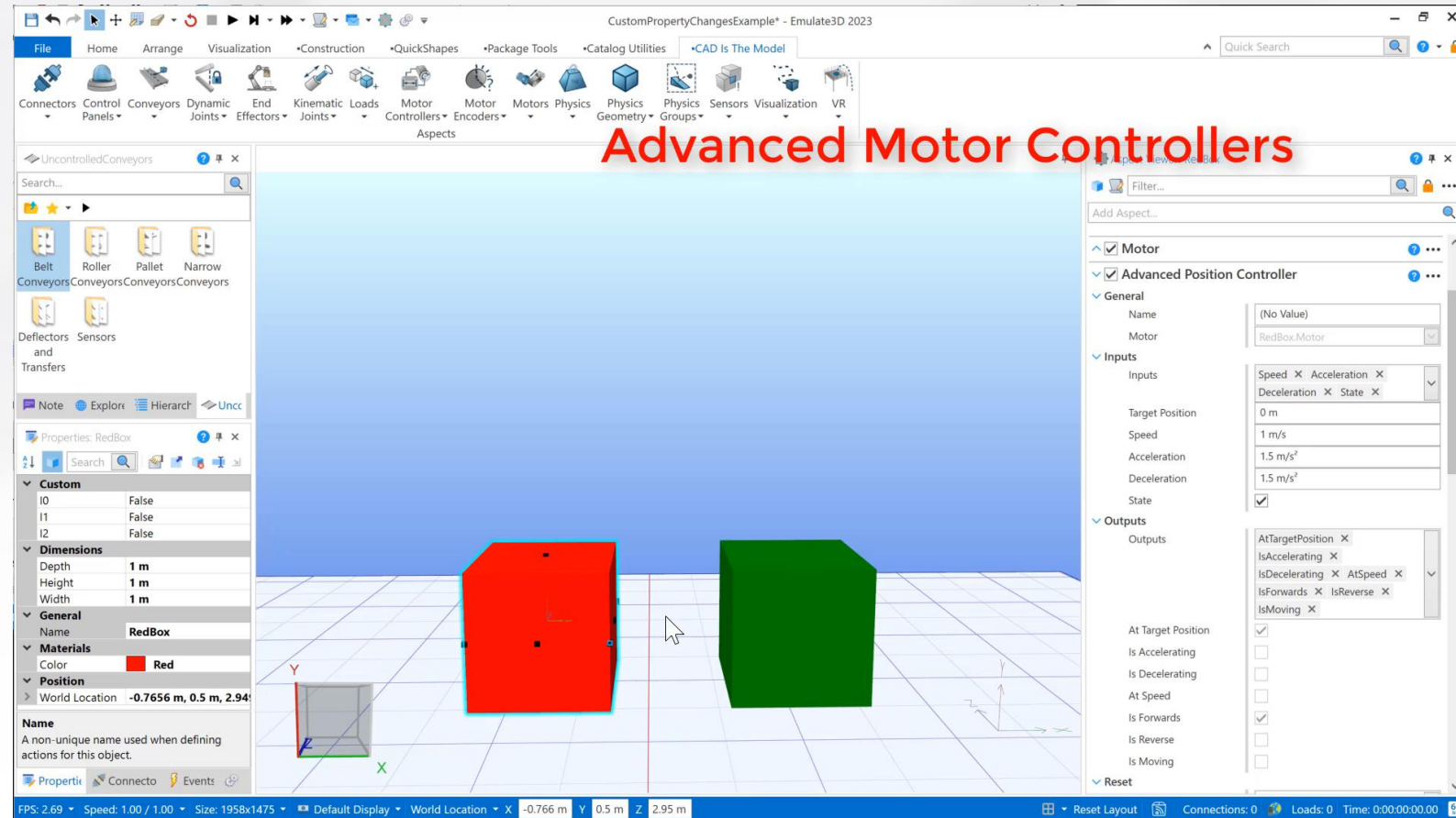
Uncontrolled Conveyors Catalog

- Replaces the Sample Catalog
- Great for Controls Testing
- Users can add their own scripts to customize the components
- Deflectors & Transfers include customizable QuickScript
- Sensors include customizable QuickScript



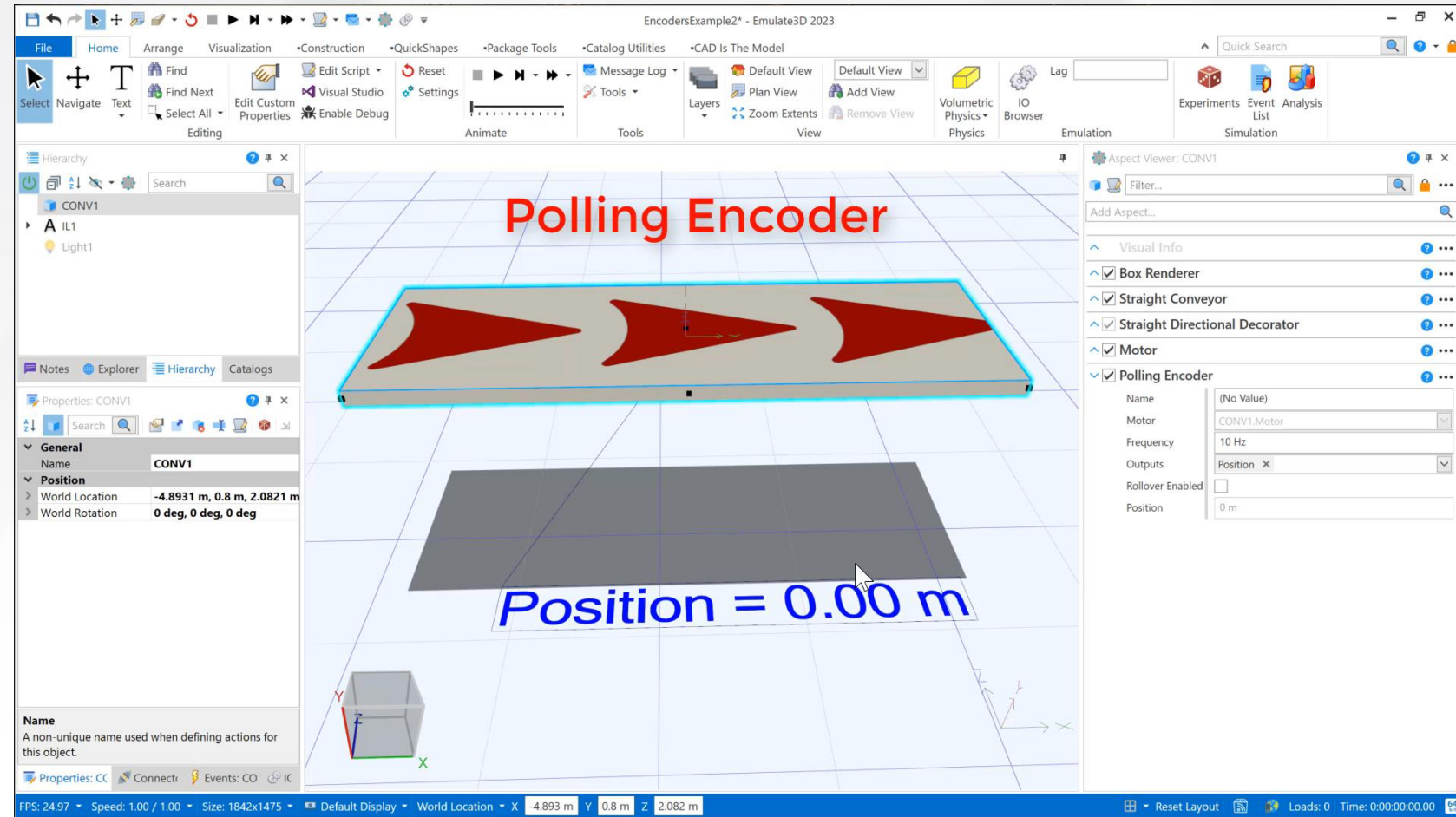
Advanced Motor Controller Aspects

- Advanced Motor Controllers are now included in the CITM Ribbon in E3D 2023+
- Advanced Position Controller
 - User configurable PLC Inputs & Output
- Advanced Actuation Controller
 - User configurable PLC Inputs & Output
 - 1 Signal Control (Activate)
 - 2 Signal Control (Extend, Retract)
 - Swap Positions Flag



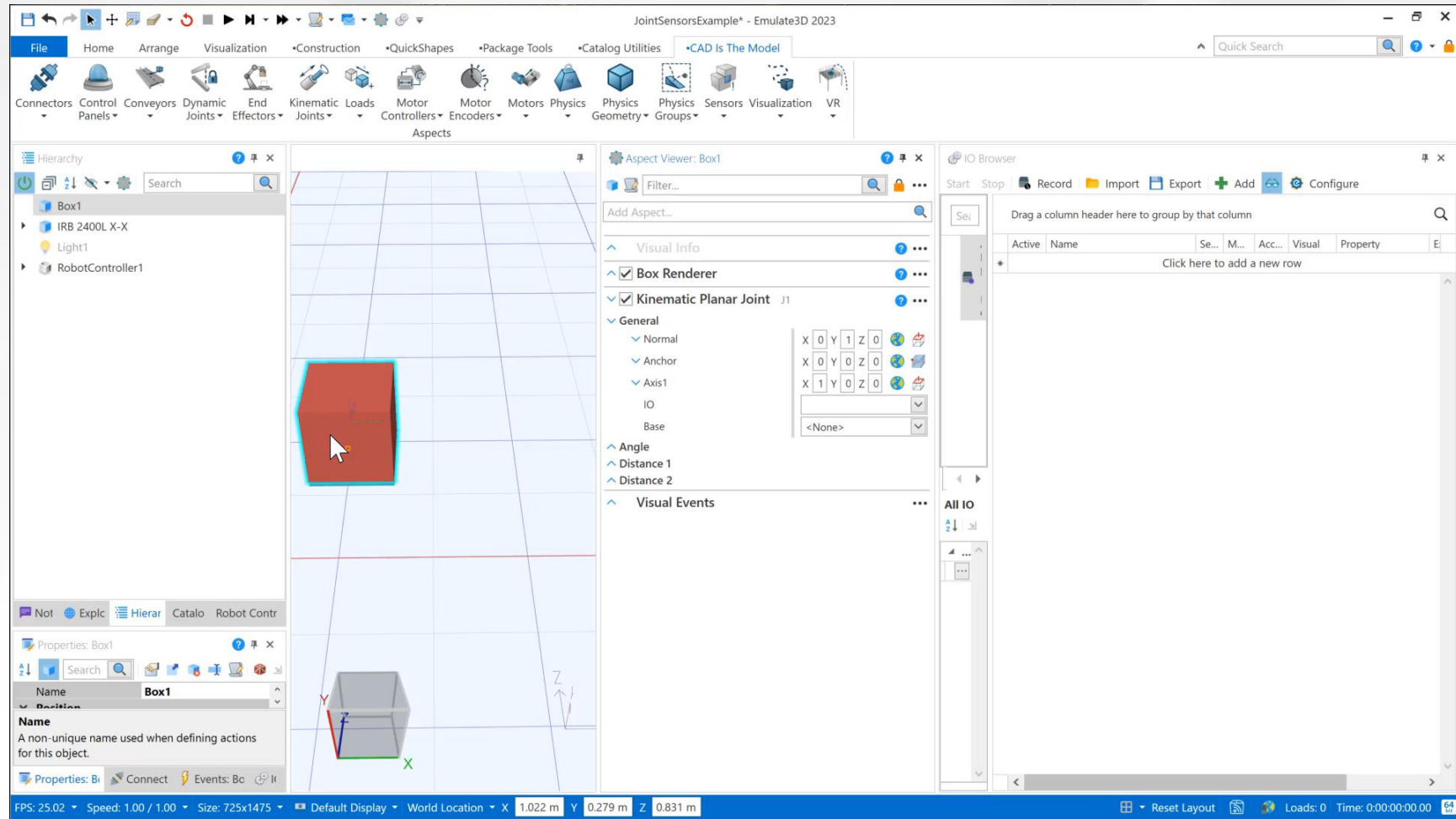
Motor Encoder Aspects

- Polling Encoder
 - added Position Rollover functionality
- Counting Encoder
 - New encoder aspect
 - Count (int) is scalable & rolls over at limits



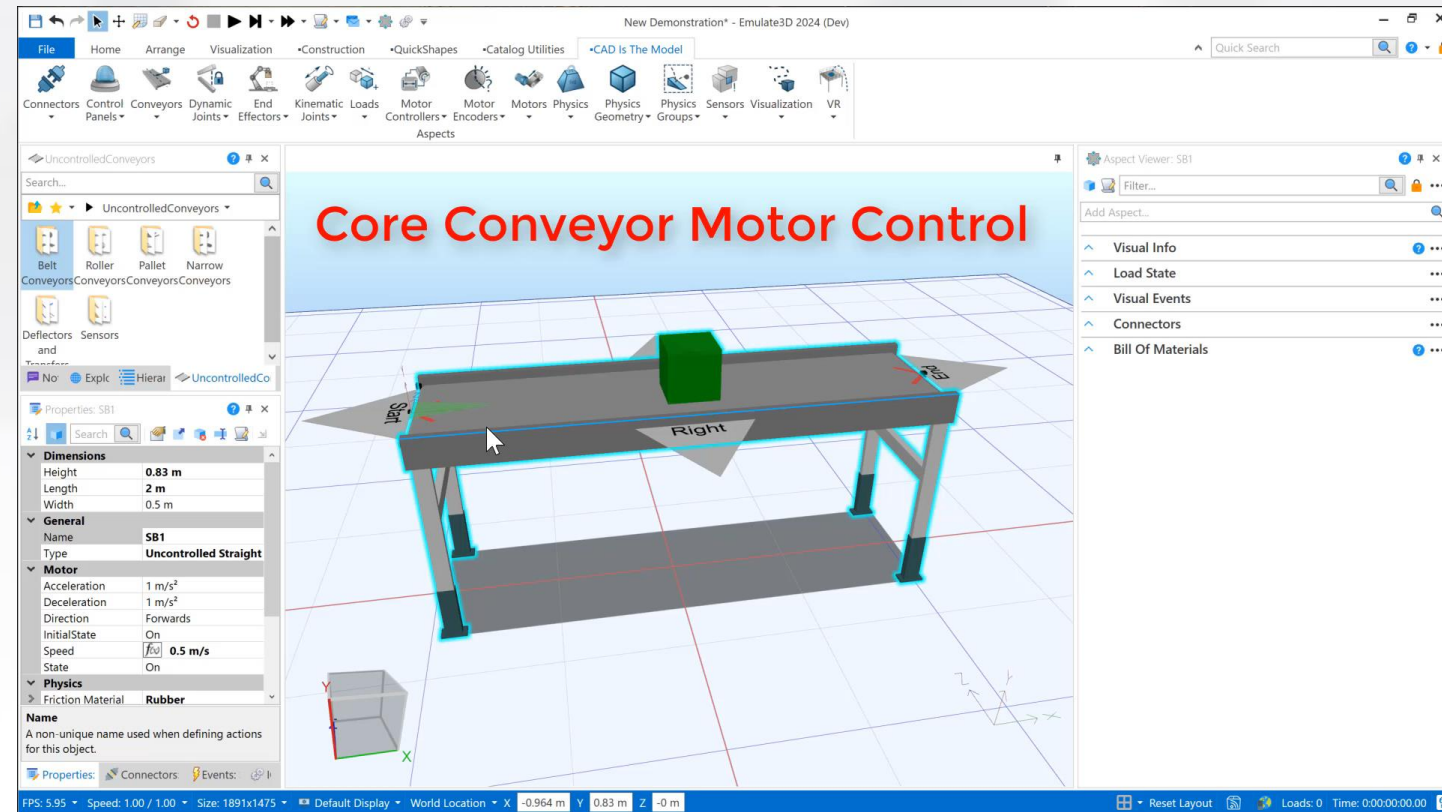
Kinematic & Dynamic Joint Sensor Aspects

- Works on all Kinematic & Dynamic Joint Sensors
- Detects when the specified Joint Value is within the chosen sensing range
- Outputs are configurable:
 - IsBlocked
 - IsCleared
 - JointValue
- Outputs are updated even when the Model is stopped
- Aspect Name updates Bindable Item Name
- Can be added to Robot Joints



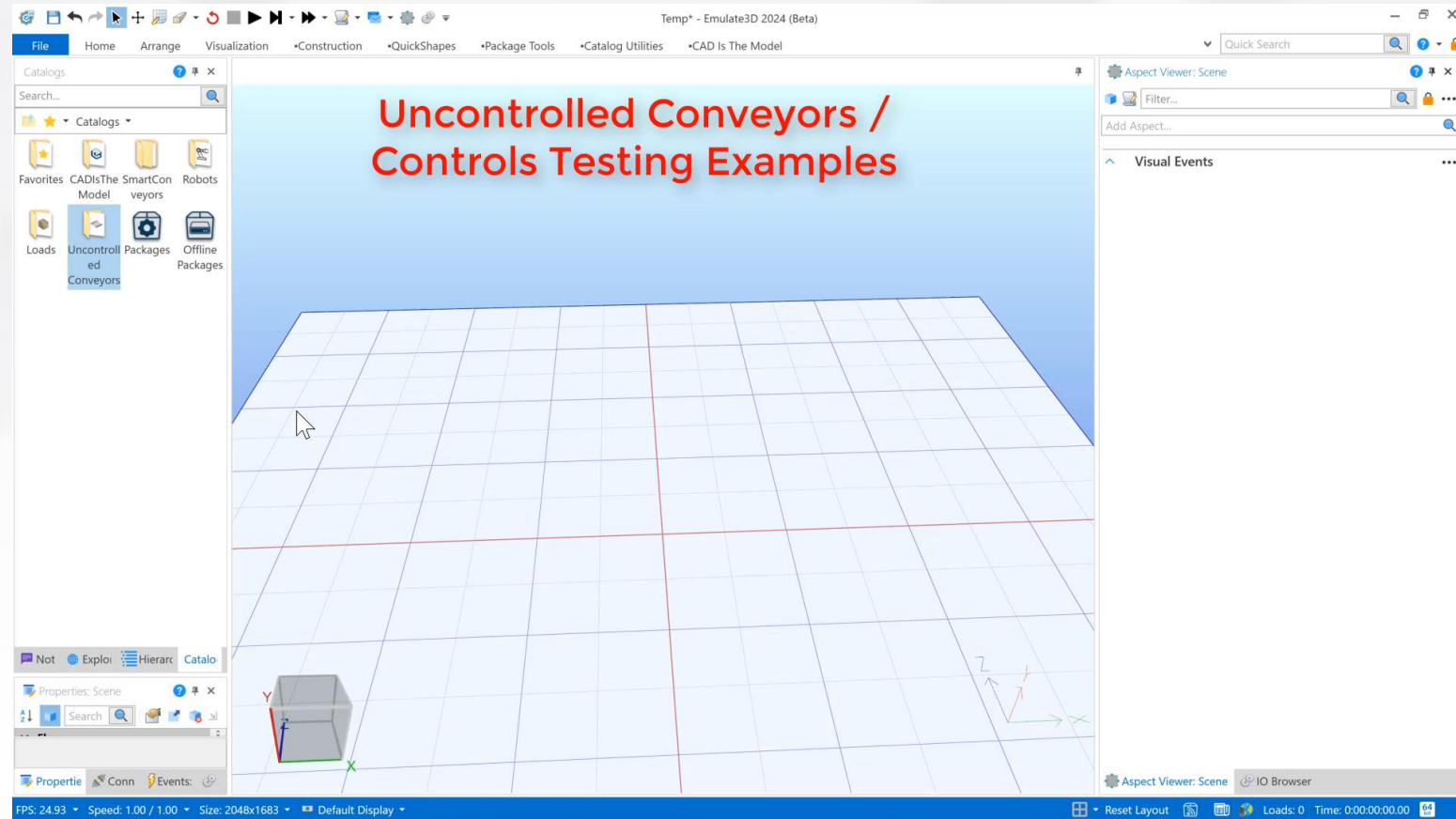
Override Core Conveyor Motor (2024+)

- Override a Core Conveyor Motor with a Motor Aspect
 - Take advantage of CITM Aspects to easily control Core Conveyors
- Add any Motor Controller
 - Generic Controller
 - Advanced Actuation / Position Controllers
 - ArmorStart 284E, PowerFlex 525, 755, & 755T Drives
- Create more complex assemblies by adding Aspects (Kinematic Joints, Kinematic Joint Sensors)
- Example configurations in Uncontrolled Conveyors catalog



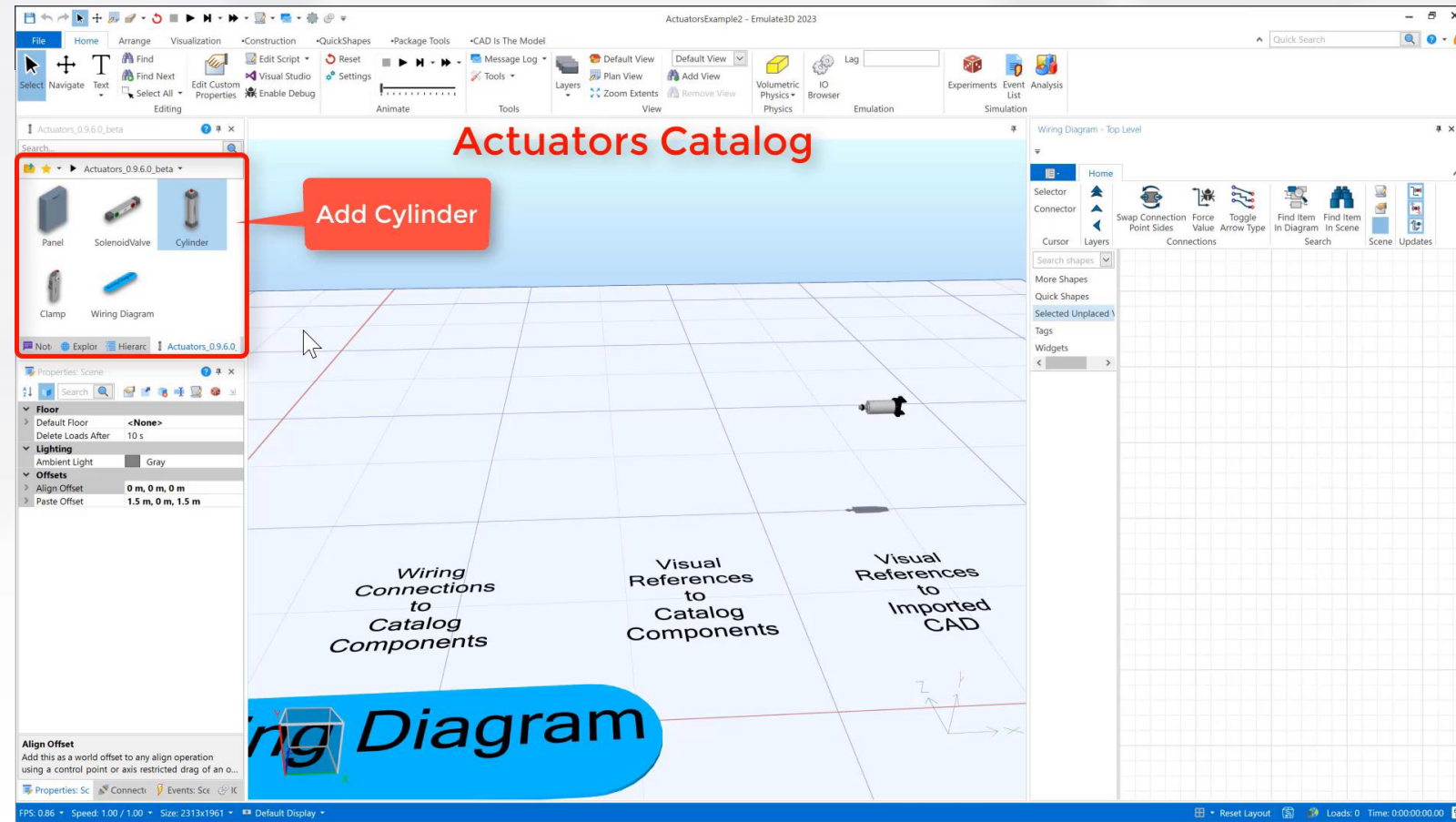
Uncontrolled Conveyors - Controls Testing Examples

- Skid Conveyor Examples
 - Basis for custom components
 - Only use CITM Aspects
 - No scripts (users can add their own)
 - Smart Visual Hierarchy & IO Browser Property Names
 - Top-level of each component is a stationary Visual with no Joints
 - Power Roll Bed child with a Motor Aspect and Override Core Conveyor Motor enabled
 - Additional Visuals and Aspects can be added for more degrees of motion
 - A Kinematic Fixed Joint affixes Power Roll Bed to move with another Joint



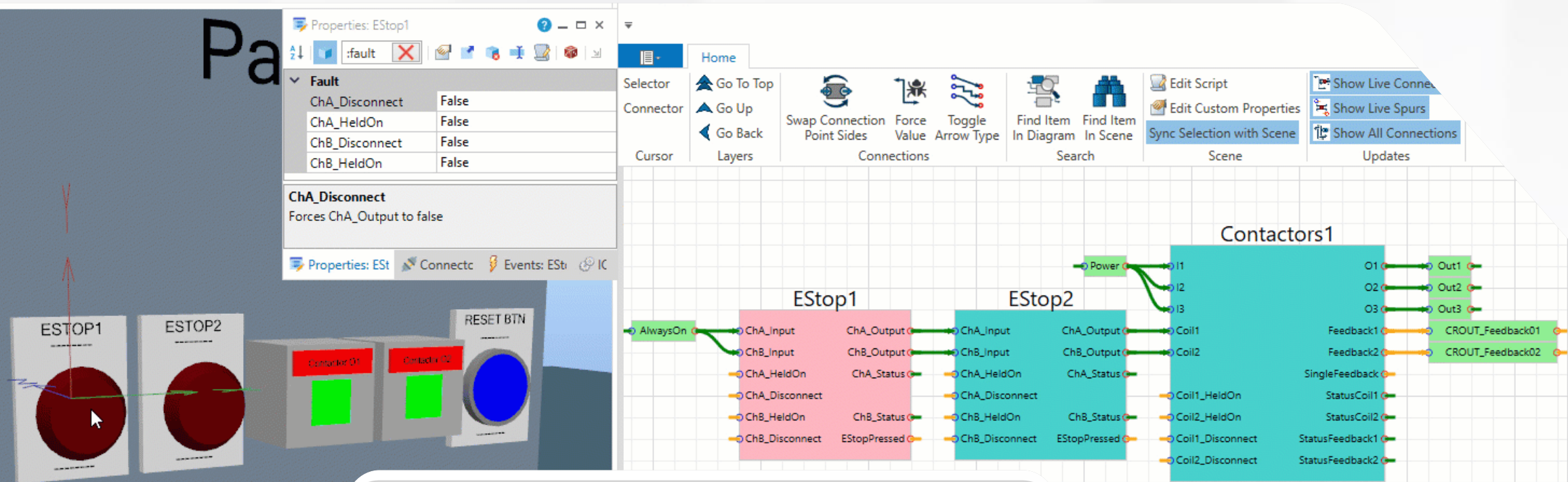
Actuators Catalog

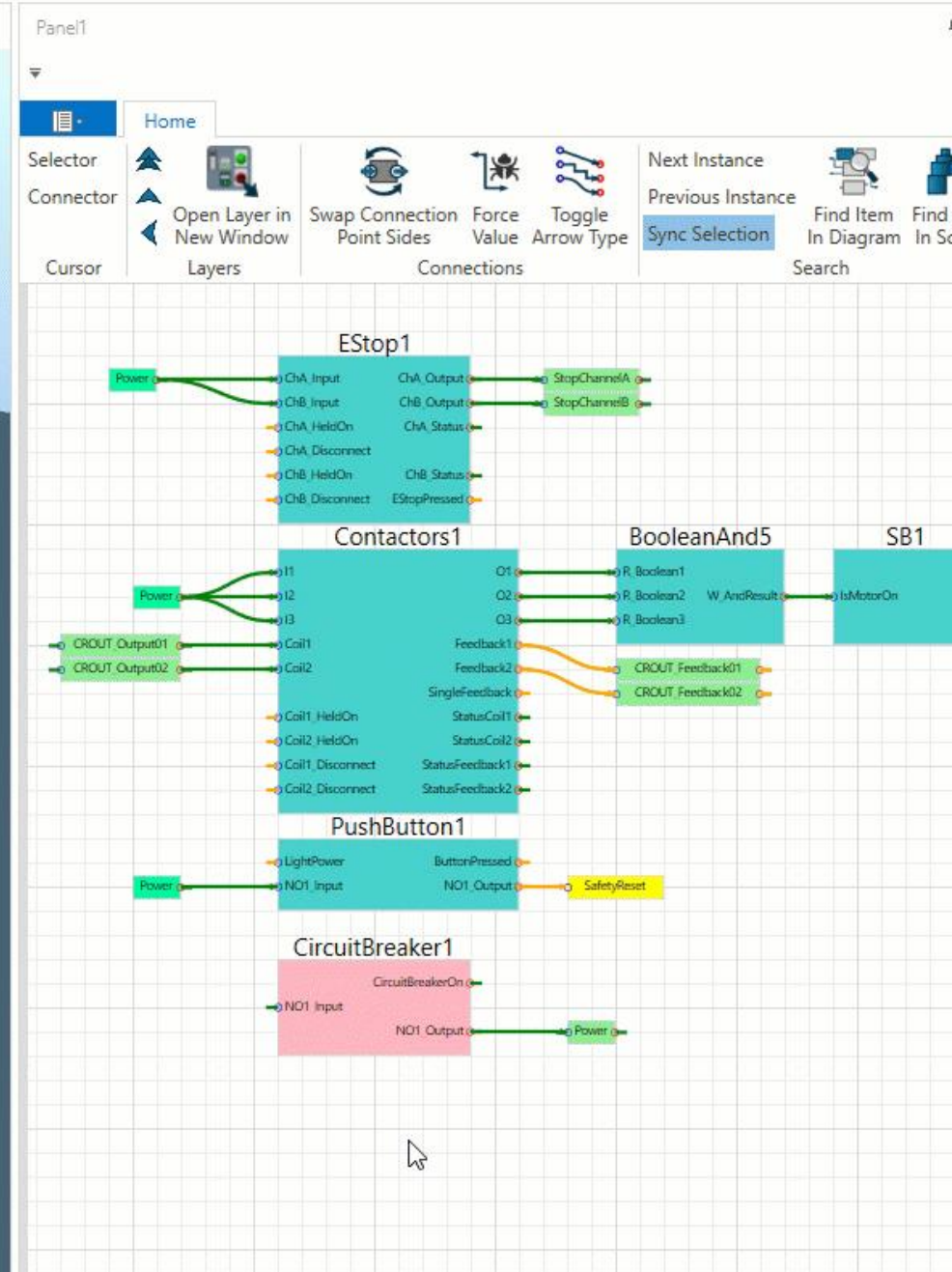
- Solenoid Valve (18 configurations)
 - Ports/Ways (2-5) , Positions (2-3)
 - Operation (normally closed, normally open, spring return, center closed, center open, center pressure)
 - Can actuate other components via Visual Reference or Wiring Diagram Connection
- Clamp
 - Initial Angle, Rotation, Scale, and Colors are configurable
- Cylinder
 - Bore, Stroke, and Colors are configurable
- Imported CAD
 - Add Aspects (Joint, Motor, Advanced Actuation Controller) to actuate by Solenoid Valve



Wiring Diagram Improvements

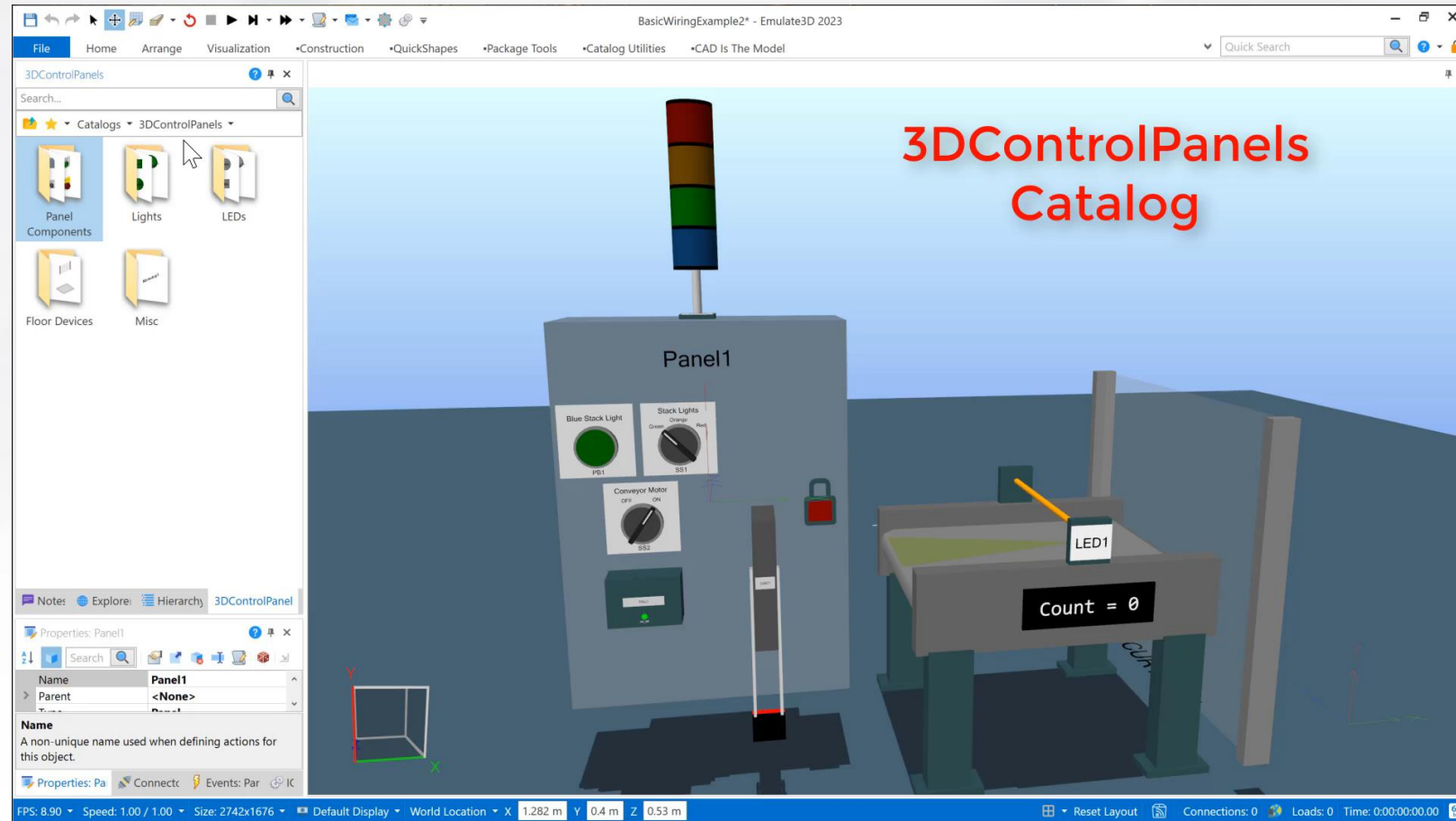
- Multiple Simultaneous Wiring Diagram Views
- Performance Improvements
- New Widgets: Exclusive Or, Index





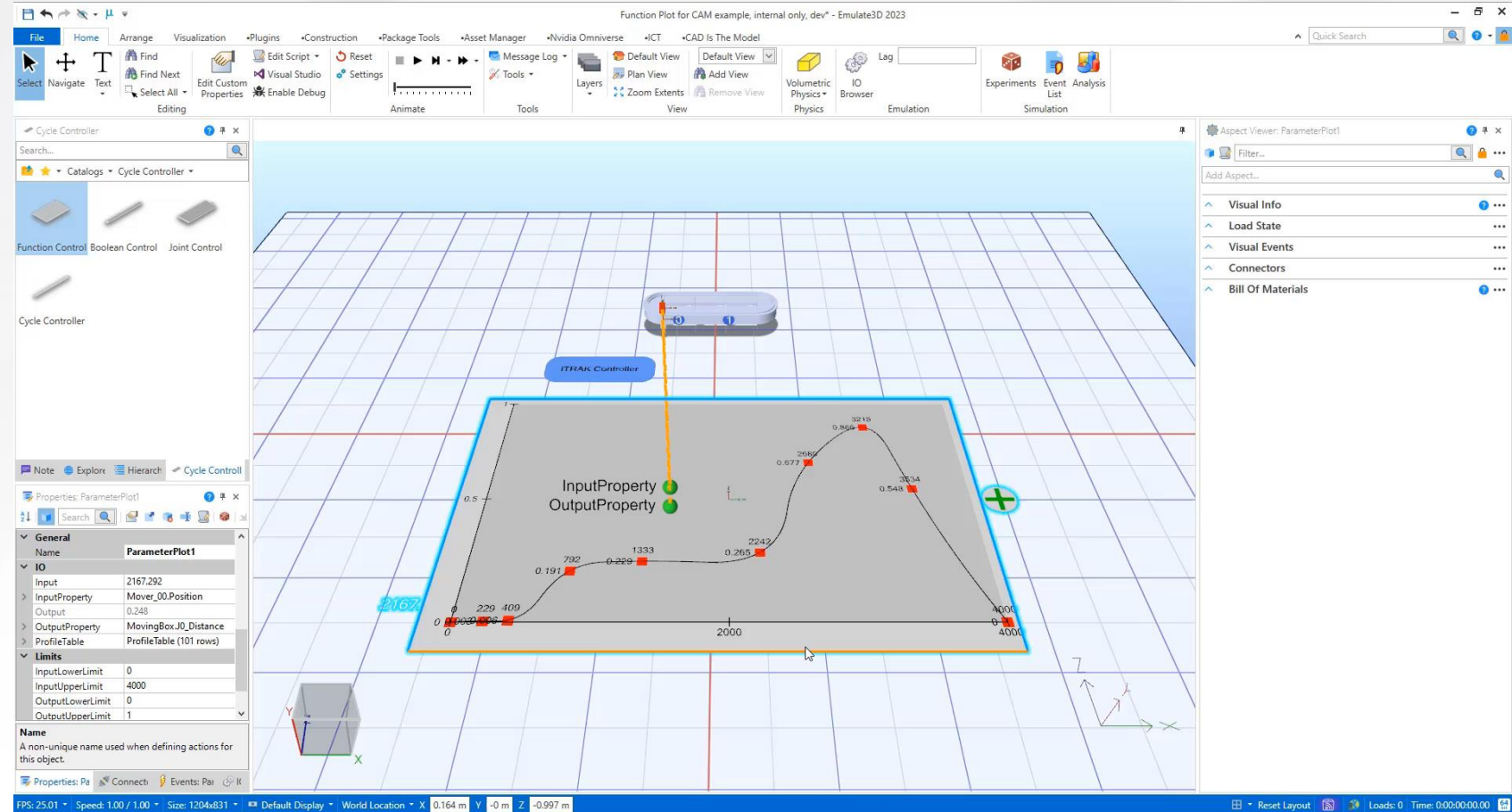
3D Control Panels Catalog

- Replaces Wiring Components from Wiring Catalog
- Improved all catalog components
- Changed Custom Property naming (R_, W_)
- Added Panel Door which opens & closes. Components snap inside. Connectors are configurable (x/y spacing, borders)
- Added LED components with user configurable colors array.
- Added Relay component
- Wiring API used to update Properties on Wiring Diagram Rails



Function Controller

- Component available in Cycle Controller Catalog & Tanks & Pipes Catalog
- Bind an Input to an Output using a user defined function
- Drag plot points around to create the function
- Interpolate output values using a curve or table
- Input value can optionally be set to the Model Time by snapping on a Cycle Controller
- Use to create a custom cam profile or acceleration profile



THANK YOU!
Any Question?



**Rockwell
Automation**

expanding **human possibility**[®]



www.rockwellautomation.com