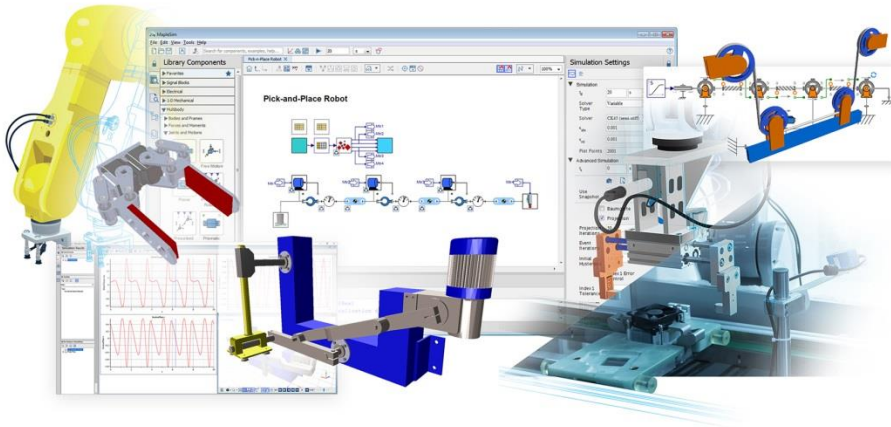


New Turnkey Solutions from Maplesoft Provide Full-Service Virtual Commissioning Solutions to Machine Builders

New release of MapleSim Insight supports low-cost, digital twin-based solutions

Waterloo, Canada; May 26, 2021: Maplesoft today announced new turnkey solutions for machine builders that make virtual commissioning highly accessible even to organizations that have no experience with modeling and simulation using digital twins. Providing a combination of products and engineering services, Maplesoft will work closely with organizations that are new to virtual commissioning to identify a suitable project, develop a high fidelity virtual model, and deploy that model to anyone in the organization who needs it using MapleSim Insight, a simple but powerful simulation platform. The latest release of MapleSim Insight provides enhanced simulation-based 3-D visualization and debugging capabilities that connect directly to common automation platforms.



For over 10 years, Maplesoft has been providing engineers with modeling and simulation tools for faster, more cost effective product development. By taking a model-based simulation approach, companies can solve machine performance issues by diagnosing root-cause issues that are otherwise very difficult to identify. The construction of model-based digital twins, however, is a new engineering skillset that many companies have yet to develop, which prevent them from realizing the benefits of this new technology.

To address these issues, Maplesoft is now offering new turnkey solutions for creating digital twins and implementing virtual commissioning. Maplesoft provides customers with full-service solutions for diagnosing, fixing, and optimizing machine performance. Customers can seek solutions to individual issues without having prior simulation experience, and Maplesoft will provide a validated digital twin that can yield powerful, cost-saving results. These digital twins are developed using MapleSim, the multidomain modeling and simulation tool from Maplesoft, which provides a single environment to model all of the key systems found in typical machine designs, including mechanical, hydraulic, and electrical systems.

Customers are also provided with a new version of MapleSim Insight, which is a low-cost tool for simulating, visualizing, and sharing MapleSim models with teams who aren't already familiar with modeling tools. In 2021, MapleSim Insight gives users faster simulation results, more options for 2-D plotting and 3-D visualizations, and improved abilities for in-depth, custom analysis. Customers can also use MapleSim Insight for real-time visualization and testing of machine control code, with direct connectivity options for industry-standard automation tools. The same 3-D visualizations can also be used by non-experts, such as sales teams looking to provide demonstrations of customized hardware to new customers.

"Most companies already understand that they can save time and money in the long run by using digital twins in their product development," says Chris Harduwar, Vice President of Business Development at Maplesoft. "What stops them from going ahead, however, is the effort it takes to get started. Learning to build a model is a big short term investment, which can be hard to justify when everybody is busy and you aren't certain how well the theoretical benefits will translate to concrete advantages in your own specific context. The turnkey solutions from Maplesoft give companies a low effort way to discover how digital twins and virtual commissioning can help them solve their immediate, practical problems, and no one has to learn how to build models unless they want to."

The new turnkey solutions from Maplesoft are now available alongside new releases of MapleSim and MapleSim Insight. The MapleSim 2021 family of products allows engineers to address design issues more easily than ever, with improved simulation performance and 3-D visualizations, new ways to share models with those who don't use MapleSim, and a host of new and expanded component libraries.

Learn more about the application [here](#), and visit the Maplesoft booth at this year's Rockwell Automation Fair® to see the benefits virtual commissioning brings to automation.

About Maplesoft

Maplesoft is the leading provider of high-performance software tools for engineering, science, and mathematics. Maplesoft Engineering Solutions provide advanced tools and services for system simulation, calculation management, and systems engineering, helping organizations maximize the power of their engineering knowledge so they can complete their projects quickly and successfully. The Maplesoft product suite includes Maple, for technical computing and calculation management, MapleSim, the advanced system-level modeling and simulation tool, and MapleMBSE, which supports a model based systems engineering approach to requirements management. Maplesoft products and services are used in machine design, robotics, aerospace, automotive, industrial automation, and many other fields where engineers face complex challenges. Key applications include the creation of digital twins, dynamic analysis of mechanisms, battery systems modeling, heat transfer modeling, and bus fleet electrification. Customers include Boeing, FLSmidth, Ford, Google, Intel, NASA, and Samsung.

Maplesoft is a subsidiary of Cybernet Systems Group.