



# DeviceNet Communication Card

Catalog Number 1784-PCD

### **Use These Release Notes**

These release notes contain information about the 1784-PCD card (Series A, B, and C) and version 4.03 of the driver.

Use these notes along with your DeviceNet Communication Card Installation Instructions, publication 1784-IN029.

To install or update the driver in Windows XP, follow the instructions in this release note. To install or update the driver in other operating systems, refer to publication 1784-IN029.

<b>Topic</b>	<b>Page</b>
Install the 1784-PCD Driver in Windows XP for the First Time	2
Update the 1784-PCD Driver in Windows XP	4
Enhancements for Version 4.03	7
Anomaly Corrected in Version 4.03	7
Enhancements for Version 4.02	7
Connecting to Multiple Networks - Do Not Rely on Autobaud	8

### Install the 1784-PCD Driver in Windows XP for the First Time

---

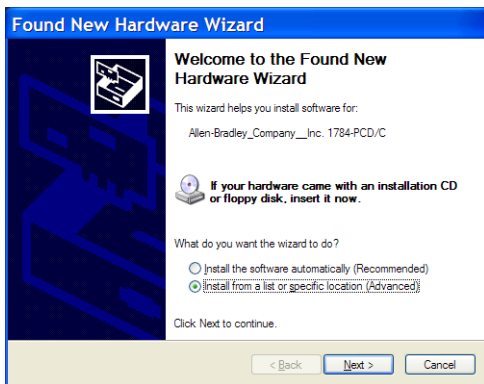
#### **IMPORTANT**

Use this procedure **only** if this is the first time you are installing the 1784-PCD driver on this computer. Otherwise, use the Update the 1784-PCD Driver in Windows XP procedure on page 4.

---

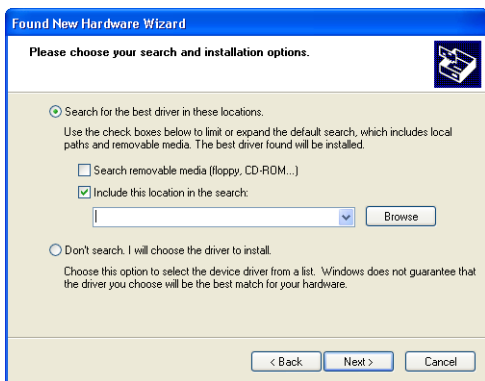
1. Insert your 1784-PCD card into your computer.

You see the Found New Hardware Wizard.



2. Click on the **Install from a list or specific location (Advanced)** radio button.
3. Click **Next**.

4. Click the **Search for the best driver in these locations** radio button.



5. Select the **Include this location in the search** checkbox.

<b>if</b>	<b>then</b>
you are installing from floppy disk	insert the 1784-PCD Installation Windows 95/98/2000/Me 32-bit Setup Disk into the computer's floppy disk drive
you are installing from a compressed file	download from <a href="http://support.rockwellautomation.com">http://support.rockwellautomation.com</a> and unzip the files into a temporary directory

6. Click **Browse** and browse to the folder that contains the installation files.
7. Click **OK**.
8. Click **Next**.
9. Follow the on-screen instructions for installing the 1784-PCD driver.

### Update the 1784-PCD Driver in Windows XP

---

#### **IMPORTANT**

Use this procedure **only** if you have previously installed the 1784-PCD driver on this computer. If not, use the *Install the 1784-PCD Driver in Windows XP for the First Time* procedure on page 2.

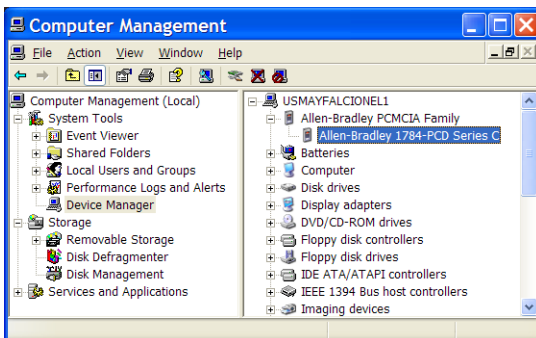
---

1. Select **Start**.
2. Right-click on **My Computer**.
3. Select **Manage**.

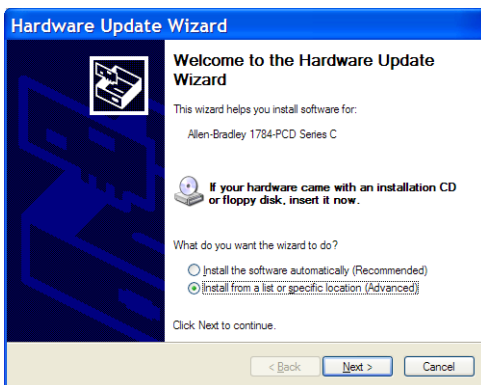


4. On the Computer Management window that appears, select **Device Manager**.

5. Click on **Allen-Bradley PCMCIA Family** to expand the list.

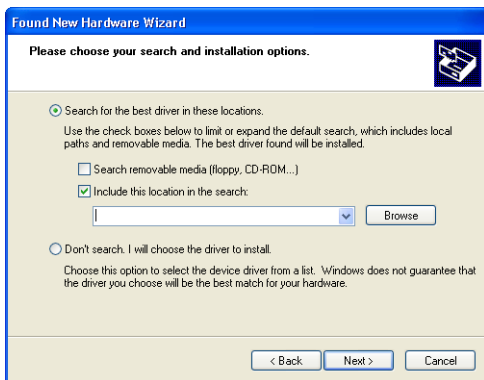


6. Right-click on the **Allen-Bradley 1784-PCD Series C** that corresponds to the 1784-PCD card you are updating and select **Properties**.
7. Click on the **Driver** tab, then click **Update Driver**. You see the Hardware Update Wizard.



8. Select the **Install from a list or specific location (Advanced)** radio button.

9. Click **Next**.
10. Click the **Search for the best driver in these locations** radio button.



11. Select the **Include this location in the search** checkbox.

<b>if</b>	<b>then</b>
you are installing from floppy disk	insert the 1784-PCD Installation Windows 95/98/2000/Me 32-bit Setup Disk into the computer's floppy disk drive
you are installing from a compressed file	download from <a href="http://support.rockwellautomation.com">http://support.rockwellautomation.com</a> and unzip the files into a temporary directory

12. Click **Browse** and browse to the folder that contains the installation files.
13. Click **OK**.
14. Click **Next**.
15. Follow the on-screen instructions for installing the 1784-PCD driver.

## Enhancements for Version 4.03

Version 4.03 of the driver now supports 1784-PCD Series A, B, and C cards on Windows XP. Version 4.02 of the driver did not support Series A cards on Windows XP.

## Anomaly Corrected in Version 4.03

Version 4.03 of the driver corrects a memory allocation anomaly that could cause Windows XP to 'blue screen'.

## Enhancements for Version 4.02

- Windows XP is now supported for Series B and later 1784-PCD cards. Series A 1784-PCD cards cannot be used on Windows XP. You must use a series B or later 1784-PCD card if your PC is running Windows XP. Also note that Series A 1784-PCD cards cannot be FLASH upgraded.
- The 1784-PCD card will now only Auto-address when the driver is configured and Auto-address is selected. Older versions of the driver would allow the card to Auto-address when power was disconnected and then reconnected to the network.
- Counters have been added to the diagnostic window.
- The uninstall program, PcdUpDt.exe, was fixed so that it will run on Windows 95 version B. Earlier versions of PcdUpDt.exe worked on Windows 95, but not on version B.
- The PCD\_Test program was changed so that once the 1784-PCD cable test completes, you are prompted as to whether you would like to run it again.

## Connecting to Multiple Networks - Do Not Rely on Autobaud

Use caution when using the Autobaud feature on multiple DeviceNet networks that are operating at different baud rates. When a 1784-PCD card is connected to a network, you cannot disconnect from that network and reconnect to another DeviceNet network that is using a different baud rate. The card will not automatically use the new network's baud rate. The driver must be reconfigured when you switch to a DeviceNet network operating at a different baud rate.

Whether or not Autobaud is in use, if messages are sent on the new network at an incorrect baud rate, devices on that network could enter a bus-off state. Refer to the DeviceNet Specification. Visit the Open DeviceNet Vendor Association (ODVA) website at [www.odva.org](http://www.odva.org) to purchase the specification. A device can recover from a bus-off condition by being reset or shut down and restarted.

To properly switch between networks of different baud rates, reconfigure the driver.

If you are using RSLinx:

1. Select **Communications** ⇒ **Configure** ⇒ **Delete**.
2. Select **Communications** ⇒ **Configure** ⇒ **Add New**.

---

### IMPORTANT

Autobaud will not work if there is not sufficient traffic on the network.

---

RSLinx is a trademark of Rockwell Automation.

DeviceNet is a trademark of Open Device Vendors Association (ODVA).

Windows 95, Windows 2000, and Windows XP are trademarks of Microsoft Corporation.

[www.rockwellautomation.com](http://www.rockwellautomation.com)

#### Corporate Headquarters

Rockwell Automation, 777 East Wisconsin Avenue, Suite 1400, Milwaukee, WI 53202-5302 USA, Tel: (1) 414.212.5200, Fax: (1) 414.212.5201

#### Headquarters for Allen-Bradley Products, Rockwell Software Products and Global Manufacturing Solutions

Americas: Rockwell Automation, 1201 South Second Street, Milwaukee, WI 53204-2496 USA, Tel: (1) 414.382.2000, Fax: (1) 414.382.4444

Europe: Rockwell Automation SA/NV, Vorstlaan/Boulevard du Souverain 36-BP 3A/B, 1170 Brussels, Belgium, Tel: (32) 2 663 0600, Fax: (32) 2 663 0600

Asia Pacific: Rockwell Automation, 27/F Citicorp Centre, 18 Whitfield Road, Causeway Bay, Hong Kong, Tel: (852) 2887 4788, Fax: (852) 2508 1846

#### Headquarters for Dodge and Reliance Electric Products

Americas: Rockwell Automation, 6040 Ponders Court, Greenville, SC 29615-4617 USA, Tel: (1) 864.297.4800, Fax: (1) 864.281.2433

Europe: Rockwell Automation, Brühlstraße 22, D-74834 Elztal-Dallau, Germany, Tel: (49) 6261 9410, Fax: (49) 6261 17741

Asia Pacific: Rockwell Automation, 55 Newton Road, #11-01/02 Revenue House, Singapore 307987, Tel: (65) 351 6723, Fax: (65) 355 1733

Publication 1784-RN531C-EN-P - October 2004

PN 957928-91

Supersedes Publication 1784-RN531B-EN-P - September 2002 Copyright © 2004 Rockwell Automation. All rights reserved. Printed in the U.S.A.