
LISTEN.
THINK.
SOLVE.®

HMI Features and Extensions Using FactoryTalk View Machine Edition v6.1 and PanelView Plus 6



Agenda

- PanelView Plus 6/ FactoryTalk View Machine Edition v6.1
- Demo
- Hands-on Lab

PanelView Plus 6 & FactoryTalk View Machine Edition v6.1

Run-time (PvP6/ ME Station)

- SMTP Email ActiveX
- Web-browser ActiveX
- FactoryTalk ViewPoint 2.1

Design-Time (View Studio)

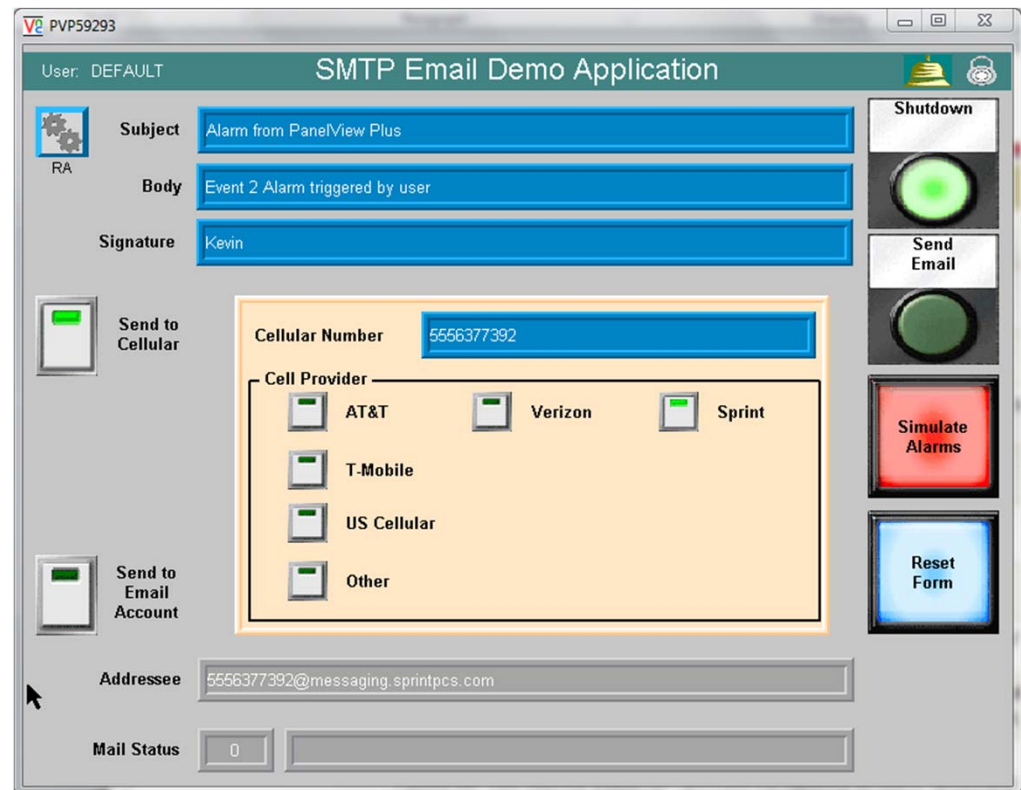
- Support Microsoft 64-bit OS
 - Windows 7 Professional w/ SP1
 - Windows Server 2008 Standard R2 w/SP1

ActiveX Controls for Machine-Level Visualization Solutions

ActiveX Control	Description
<i>NEW, v6.1!</i> SMTP Email	Send an email via an external SMTP Email Server or Service (i.e., GMail)
<i>NEW, v6.1!</i> Web Browser	Embed web-browser frame on a FTView Machine Edition display.
Program Launcher	Launch another program on the run-time platform while running an ME project
DataStorePlus	Log tag data to a CSV file. It contains advanced features such as file management, logging periodically, and optimized logging
Recipe	Save, load, and delete recipes from a .csv file
ME_IPInfo	Display PanelView Plus TCP/IP configuration information in HMI application
MacroTen	Allow placeholders to be used in macros
Set Bit Cursor Point	Emulate the functionality of the Set Bit Cursor Point object found in the PanelView "e" terminals
Custom Popup Keyboard	Allow users to use a custom 'Pop-up Keyboard' in an ME application using a user-defined file that provides key assignments of potentially any languages, i.e. Chinese, Korean, French, etc.
DisplayP	Open and close On Top and Replaced displays and launch parameters. FactoryTalk View Machine Edition v5.1 provides this capability as built-in functionality.

NEW!!! V6.10 SMTP Email ActiveX Control

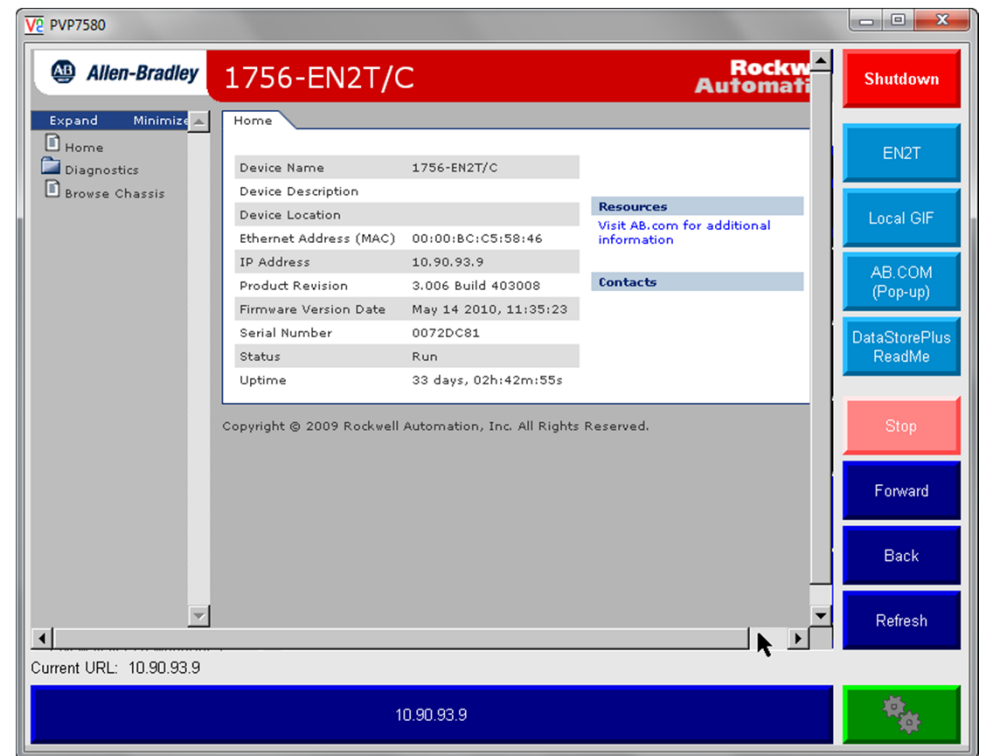
- When triggered sends an email via an external SMTP Server or Service
- Flexible SMTP Server configuration
 - Configurable SMTP Server & Port
 - SSL connection
 - Authenticated or anonymous connection
- Powerful email options
 - TO, CC, BCC, Subject, From, From Email, and Signature Fields
 - Supports attachments
 - Tag connection for email content
 - Ability to specify a text file as email content



NEW!!! V6.10 Web Browser ActiveX Control

- Embed web browser on PanelView Plus display
- No ability for operator to change website URL shown

- Control supports connections for
 - URL Address
 - Internet Navigation (Refresh, Stop, Forward, Back)
- Viewable content limited by Microsoft Windows CE 6.0 R3
 - Internet is continuously changing and supporting new technologies
 - Microsoft CE is not the same as Microsoft Windows on a desktop computer
 - Many Internet supporting technologies available on a PC are not on CE



FactoryTalk ViewPoint v2.1

Tag Write Capability

- Numeric Entry
- Numeric Entry Cursor Point
- String Entry
- Momentary Push Button
- Maintained Push Button
- Multi-state Push Button
- Ramp Push Button
- Interlocked Push Button

Improved Security

- Role based security using FactoryTalk security groups
- Assign group(s) as ViewPoint Administrators
- Assign group(s) to ViewPoint displays
 - Deny Access
 - View Only
 - Read/Write
- Supports inheritance for ease of configuration

FactoryTalk ViewPoint application can be configured to allow Tag Writes when security is disabled

Extended Operating System Support

- Supported Operating Systems now include:
 - Windows 7 Professional SP1 (64-bit)
 - Windows Server 2008 SP2 R2 (64-bit)





HANDS-ON LAB



HANDS ON LAB

The lab is broken into three sections

- Demo
- Walk-through of how the demo was created
- An introduction to FactoryTalk View Machine Edition

HANDS ON LAB

Demo Sections

Recipe Manager	11
ViewPoint and Email	15
VNC	24
DataStore Plus & FTP	28
Faceplates	32
Language Switching	38
Global Objects	40
WebBrowser and PDF Viewer	42

How To Sections

Recipe Manager	46
ViewPoint and Email	52
VNC	66
DataStore Plus & FTP	70
Faceplates	76
Language Switching	77
Global Objects	82
WebBrowser and PDF Viewer	90

LISTEN.
THINK.
SOLVE.®

Thank you for
participating!

Please remember to tidy up your work
area for the next session.
We want your feedback! Please
complete the session survey!