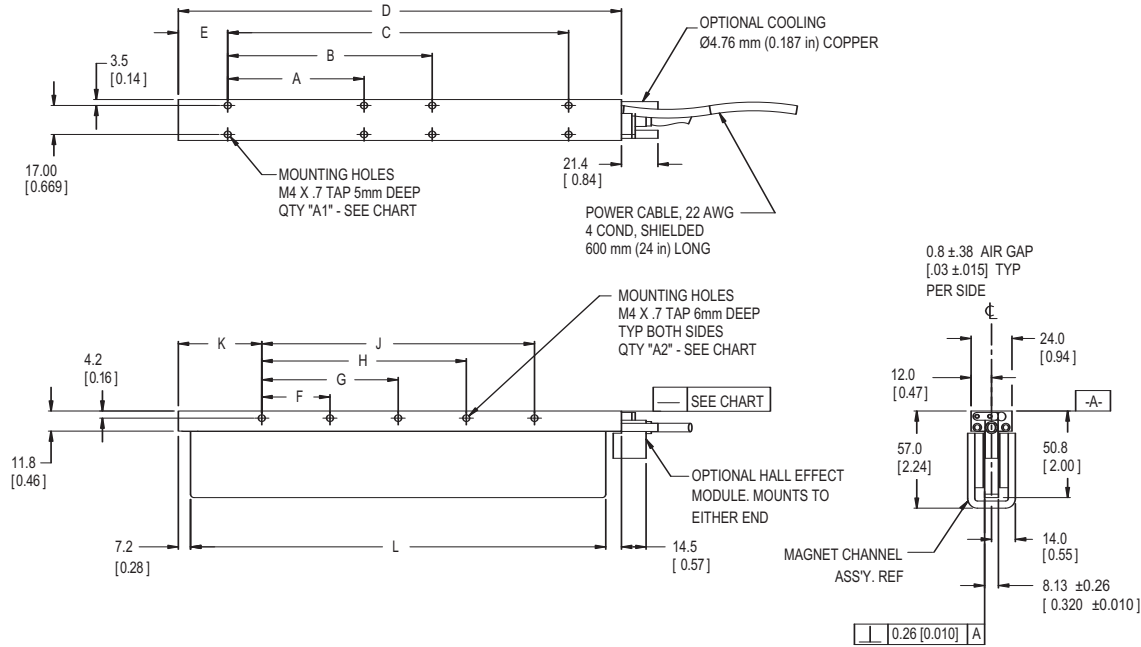


LEM Brushless Linear Motor Diagram

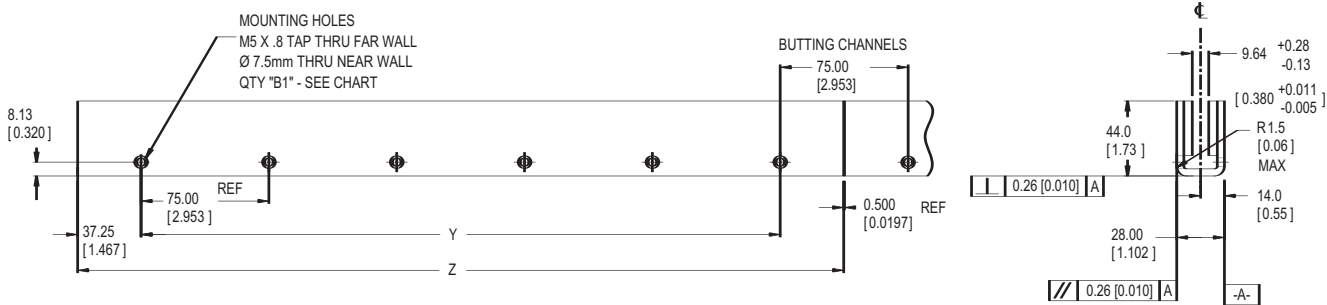
Dimensions mm [in]

Coil Assembly



Motor Coil Dimensions															
Coil Size	Unit	A	B	C	D	E	F	G	H	J	K	L	Straightness	A1	A2
LEM-S-1	mm (in)	40.00 (1.575)			80.0 (3.15)	19.0 (.75)	20.00 (.787)				29.0 (1.14)	63.5 (2.5)	0.25 (.010)	4	4
LEM-S-2	mm (in)	80.00 (3.150)			140.0 (5.51)	29.0 (1.14)	40.00 (1.575)				49.0 (1.93)	123.5 (4.86)	0.25 (.010)	4	4
LEM-S-3	mm (in)	40.00 (1.575)	100.00 (3.937)	140.00 (5.512)	200.0 (7.87)	29.0 (1.14)	40.00 (1.575)	60.00 (2.362)	100.00 (3.937)		49.0 (1.93)	183.5 (7.22)	0.25 (.010)	8	8
LEM-S-4	mm (in)	80.00 (3.150)	120.00 (4.724)	200.00 (7.874)	260.0 (10.24)	29.0 (1.14)	40.00 (1.575)	80.00 (3.150)	120.00 (4.724)	160.00 (6.299)	49.0 (1.93)	243.5 (9.59)	0.50 (.020)	8	10

Magnet Channel



Magnet Channel Dimensions				
Length	Unit	Y	Z	B1
225*	mm (in)	150.00 (5.906)	224.50 (8.839)	3
300	mm (in)	225.00 (8.858)	299.50 (11.791)	4
375*	mm (in)	300.00 (11.811)	374.50 (14.744)	5
450	mm (in)	375.00 (14.764)	449.50 (17.697)	6

Magnet Channel Dimensions				
Length	Unit	Y	Z	B1
525*	mm (in)	450.00 (17.717)	524.50 (20.650)	7
600	mm (in)	525.00 (20.669)	599.50 (23.602)	8
675*	mm (in)	600.00 (23.622)	674.50 (26.555)	9
750	mm (in)	675.00 (26.575)	749.50 (29.508)	10

* Magnet channels with an * can not be butted together since they have the same magnetic poles on each end. Additionally, magnet channels can only be butted from one side (contact factory).